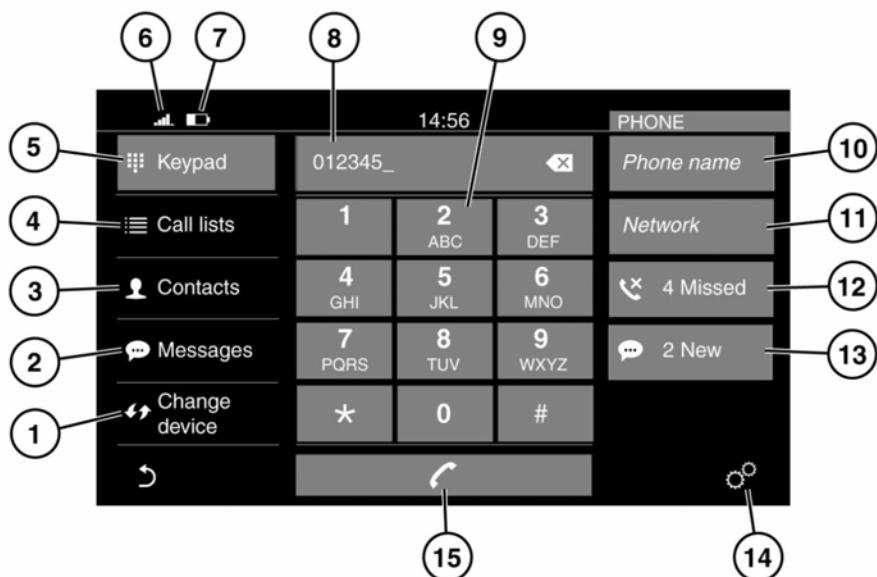


## TELEPHONE SYSTEM OVERVIEW



E164133

For information on connecting a **Bluetooth®** phone or device, see **156, PAIRING AND CONNECTING A BLUETOOTH® PHONE OR DEVICE**.

For information on cell phone compatibility, see **156, TELEPHONE COMPATIBILITY**.

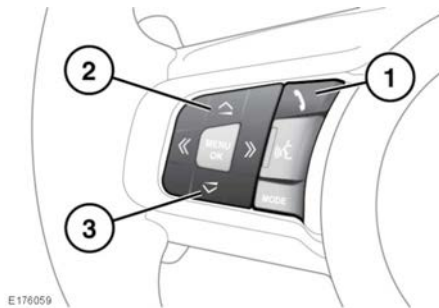
**Note:** Some of the Telephone system features will not operate, unless the SD card supplied for the vehicle is inserted correctly into the SD card slot. See **130, CONNECTING A MEDIA DEVICE**.

1. **Change device:** Touch to search for a new, or change to another paired phone or device.
2. **Messages:** Touch to select the Messages inbox, or to create a new message.

3. **Contacts:** Touch to select the connected phone's Contacts list. Scroll through the list, or use the alphas (A-C, D-F, etc.) to find the contact more quickly.
4. **Call lists:** Touch to access the connected phone's Call lists.
5. **Keypad:** Touch to display the keypad.
6. Network signal strength icon.
7. The connected phone's battery level icon.
8. Status display: Displays the number or contact selected.
9. Keypad.
10. Name of the connected phone.
11. The connected phone's network provider.
12. Missed calls: Indicates any missed calls.
13. New messages: Indicates that a new message/s has been received.

14. Settings: Touch to display the **General settings** menu. Select **Phone** for the following options:
  - **Announce incoming messages:** Turn on/off.
  - **Refresh phonebook:** Select to refresh the connected phone's Phonebook.
15. Touch to make or answer a call (green button), or touch to end a call (red button).

## STEERING WHEEL CONTROLS



1. Press to answer an incoming call. Press to make or end a call.
2. Press to increase the volume when in a call.
3. Press to decrease the volume when in a call.

## TELEPHONE SAFETY

### **⚠ WARNING**

Even when using the Bluetooth hands-free feature, use of your phone while you are driving is dangerous, as it diverts attention from the traffic situation. If you wish to use your phone, stop at an appropriate place where you are not endangering or inconveniencing other vehicles.

### **⚠ WARNING**

Drivers should talk on their cell phones only when it is safe to do so and when such use will not distract the driver from the road.

### **⚠ WARNING**

Drivers should never text message while driving. Texting while driving diverts attention from the road and can lead to accidents, causing serious injury or death.

### **⚠ WARNING**

Switch off your phone in areas with a high explosion risk. This includes filling stations, garages, fuel storage areas or chemical factories, as well as places where the air contains fuel vapor (such as an open vehicle hood), chemicals or metal dust. The phone could trigger an explosion, or cause a fire.

### **⚠ WARNING**

The functioning of cardiac pacemakers or hearing aids may be impaired when the phone is in use. Check with a doctor or manufacturer whether any such devices you or your passengers are using, are sufficiently protected against high-frequency energy. The Health Industry Manufacturers' Association recommends that a minimum separation of 6 in (15 cm) is maintained between a wireless phone antenna and a pacemaker, to avoid potential interference with the pacemaker. These recommendations are consistent with the independent research by, and recommendations of, Wireless Technology Research.

### **⚠ WARNING**

Always stow your phone securely. In an accident, loose items can cause injury.

## CALL VOLUME

The phone call's volume is operated by the Audio system's volume control.

If the Audio system is in use when a phone call is active, the Audio system source is muted for the duration of the call.

## RECEIVING TEXT MESSAGES

When a pop-up screen appears with an incoming text message, touch the **Show** button.

A screen appears with the following options:

- **Reply:** Touch to select a screen where a reply can be entered and sent.  
***Note:** This option is only available when the vehicle is stationary.*
- **Template:** Touch to select a list of replies (e.g., **Yes, No, Thank you!, I'll be arriving a little late**, etc.). Select the required reply.
- **Read Out:** Touch for the message to be read out as an audio message.

## DECLARATION OF CONFORMITY

### Export controls

This product contains commodities, technology or software exported from the United States in accordance with the Export Administration regulations. Diversion contrary to U.S. or Canadian law is prohibited.

### United States of America

This device complies with part 15 of the FCC rules. Operation is subject to the following two conditions:

- (1) This device may not cause harmful interference, and
- (2) this device must accept any interference received, including interference that may cause undesired operation.

***Note:** The manufacturer is not responsible for any radio or TV interference caused by unauthorized modifications to this equipment. Such modifications could void the user's authority to operate the equipment.*

### Canada

This device complies with Industry Canada Standard IC - RSS-210. Operation is subject to the following two conditions:

- (1) this device may not cause interference, and
- (2) this device must accept any interference, including interference that may cause undesired operation of the device.

This equipment complies with FCC/IC radiation exposure limits set forth for uncontrolled equipment and meets the FCC Radio Frequency (RF) Exposure Guidelines in Supplement C to OET65 and RSS-102 of the IC Radio Frequency (RF) Exposure rules. This equipment has very low levels of RF energy that is deemed to comply without Maximum Permissive Exposure (MPE) evaluation.

It is desirable that it should be installed and operated with at least 8 ins (20 cm) or more between the radiator and person's body (excluding extremities: hands, wrists, feet and ankles).

USA FCC ID: A269ZUA130.

Canada IC: 700BIAM2101.

***Note:** Changes or modifications, not expressly approved by the party responsible for compliance, could void the user's authority to operate the equipment.*

**Note:** *This equipment has been tested and found to comply with the limits for a Class B digital device, pursuant to Part 15 of the FCC Rules. These limits are designed to provide reasonable protection against harmful interference in a residential installation.*

*This equipment generates, uses and can radiate radio frequency energy and, if not installed and used in accordance with the instructions, may cause harmful interference to radio communications. However, there is no guarantee that interference will not occur in a particular installation.*

*If this equipment does cause harmful interference to radio or television reception, which can be determined by turning the equipment off and on, the user is encouraged to try to correct the interference by one or more of the following measures:*

- *Reorient or relocate the receiving antenna.*
- *Increase the separation between the equipment and the receiver.*
- *Connect the equipment into an outlet on a circuit different from that to which the receiver is connected.*
- *Consult the retailer or an experienced radio/TV technician for help.*