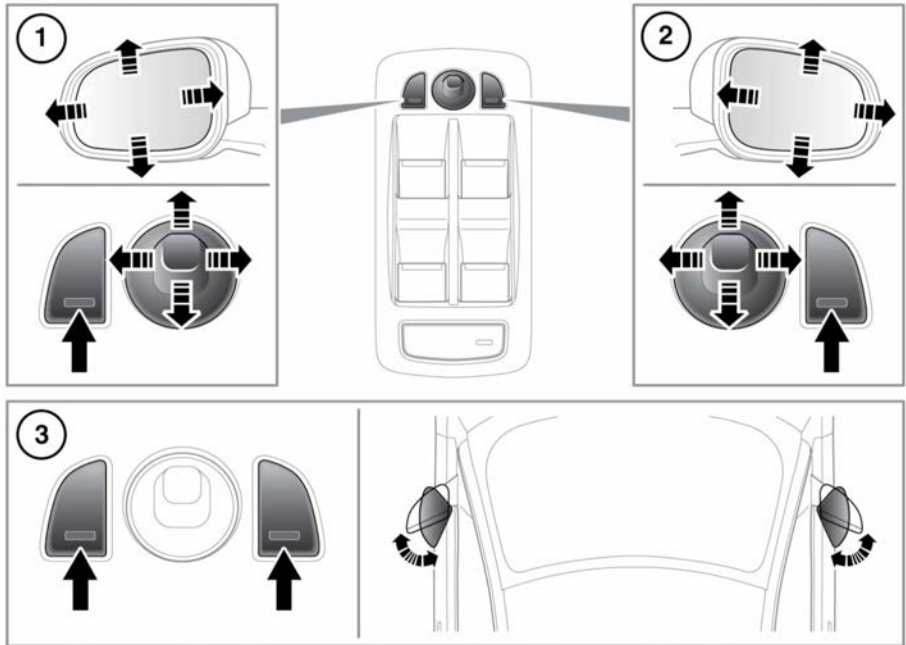


EXTERIOR MIRRORS



E166364

1. Left mirror adjustment.
2. Right mirror adjustment.
3. Power-fold/unfold: Press both buttons simultaneously. This feature is inhibited at speeds over 70 mph (110 km/h).

Note: A thermal cut-out will temporarily disable the power-fold feature if the switches are operated repeatedly.

Note: The rear-view door mirror heaters operate automatically according to the external temperature and the heated rear screen operation.

Note: An amount of knock protection is designed into the door mirrors. If a mirror is accidentally knocked inwards or manually folded inwards, the mirror head will be disengaged from the folding mechanism. To re-engage the mechanism, fold then unfold the mirror using the switch.

The mirrors can be adjusted and folded when the ignition is on and for up to 5 minutes after the ignition is switched off, provided the driver's door is not opened.

Press the appropriate button to select the mirror to be adjusted; the button LED indicator lamp will illuminate to confirm which side is active. Use the joystick control to adjust the mirror's glass.

Note: Depending on the type of lens used, distances may be difficult to judge accurately when only using the mirrors.



The mirrors can be configured to automatically fold when the vehicle is locked and unfold when unlocked. This feature can be enabled/disabled by a Retailer/Authorized Repairer.

If the mirrors are accidentally knocked out of position (e.g., so only one is folded), press both buttons simultaneously to re-synchronize.

Note: If the mirrors were folded using the switches, they will not unfold when the vehicle is unlocked.

Note: Up to 3 different exterior mirror positions can be stored and recalled using the Driving position memory feature. See **21, DRIVING POSITION MEMORY**.

MIRROR DIP WHEN REVERSING

The mirrors can be configured so that when Reverse (**R**) gear is selected, the passenger's door mirror is automatically adjusted to provide an improved viewing angle for reversing.

The dipped position of the mirrors is a preset position. In **R**, the mirrors can be adjusted, but the new position cannot be saved.

Note: The preset position of the dipped mirror cannot be altered.

When the gear selector is moved out of **R**, or if the vehicle's speed exceeds 7.5 mph (12 km/h) while reversing, the mirror will return to its previous position.

Reverse-dip Mirror can be enabled/disabled via the **Vehicle Settings** menu. See **47, INSTRUMENT PANEL MENU**.