

# Vehicle recovery

## RECOVERY METHOD

The method for recovery/transportation of the vehicle is on a transporter or trailer designed for that purpose.

### NOTICE

*Make sure that vehicle recovery/transportation is carried out by suitably qualified personnel and the vehicle is secured correctly.*

### NOTICE

*The recovery agent must activate the Transmission park release before recovery commences. This procedure is covered in a separate publication for service personnel. Failure to activate the Transmission park release can result in serious transmission damage.*

### NOTICE

*During vehicle recovery, the Smart key must remain inside the vehicle and the ignition must be switched on to make sure that the steering column is unlocked.*

**Note:** *If the vehicle's battery is to be disconnected, the steering column must be unlocked first. It is not possible to unlock the steering column with the battery disconnected.*

### NOTICE

*This vehicle should not be towed on all 4 wheels and should not be recovered with the front or rear wheels suspended. Doing so can result in serious transmission damage.*

## FRONT TOWING EYE

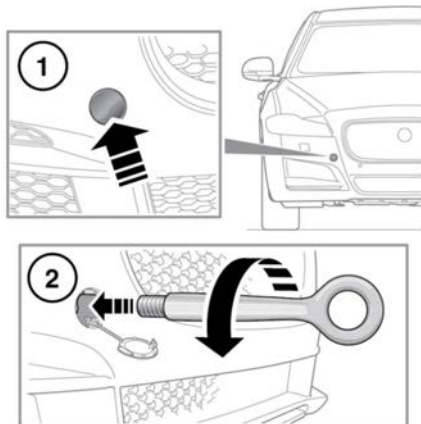
### ⚠ WARNING

The towing eye at the front of the vehicle is designed for on-road recovery only. If it is used for any other purpose, it may result in vehicle damage and serious injury.

### ⚠ WARNING

**Use extreme caution when moving or towing the vehicle. Death or serious injury may occur.**

The towing eye is part of the vehicle's tool kit, located under the luggage compartment floor panel. See **234, WHEEL CHANGING**.



The front towing point is located behind a small access panel in the front bumper.

To fit the towing eye:

1. Press the lower edge of the front bumper access panel to release the retaining clip and then remove the cover.

**Note:** *Note the orientation of the access cover to aid refitting.*

2. Locate the towing point through the front bumper and fully screw the towing eye counter-clockwise into the towing point, until secure.

**Note:** *Pass the vehicle's wheel brace through the towing eye, to act as a lever to help rotate the towing eye until it is completely tight.*

To refit the access panel, align the lug into the recess in the bumper and then lightly press the opposite edge to engage the retaining clip.

## **⚠ WARNING**

**Use extreme caution when detaching towing equipment. Vehicle movement is possible, which can result in serious injury.**

## REAR TOWING EYE

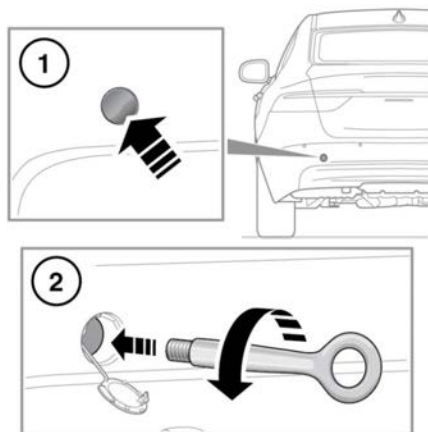
## **⚠ WARNING**

**The towing eye at the rear of the vehicle is designed for on-road recovery only. If it is used for any other purpose, it may result in vehicle damage and serious injury.**

## **⚠ WARNING**

**Use extreme caution when moving or towing the vehicle. Death or serious injury may occur.**

The towing eye is part of the vehicle's tool kit, located under the luggage compartment floor panel. See **234, WHEEL CHANGING**.



E174609

The rear towing point is located behind a small access panel in the rear bumper.

To fit the towing eye:

1. Press the lower edge of the rear bumper access panel to release the retaining clip and then remove the cover.

**Note:** Note the orientation of the access cover to aid refitting.

2. Locate the towing point through the rear bumper and fully screw the towing eye counter-clockwise into the towing point, until secure.

**Note:** Pass the vehicle's wheel brace through the towing eye, to act as a lever to help rotate the towing eye until it is completely tight.

To refit the access panel, align the lug into the recess in the bumper and then lightly press the opposite edge to engage the retaining clip.

## **⚠ WARNING**

**Use extreme caution when detaching towing equipment. Vehicle movement is possible, which can result in serious injury.**