



Vehicle recovery

TOWING EYES

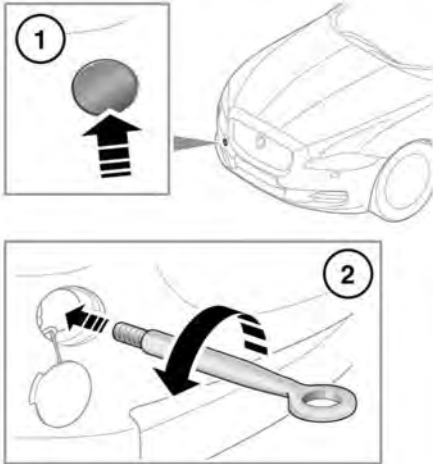
-  **The towing eye at the front of the vehicle is designed for on-road recovery only.**
-  **Do not tow the vehicle on all four wheels.**

The recommended method for recovery/ transportation of the vehicle, is on a transporter or trailer designed for that purpose.

Make sure that transportation is carried out by suitably qualified persons, and that the vehicle is secured correctly.


ATTACHING THE FRONT TOWING EYE

The towing eye is included in the tool kit, located in the under-floor area of the luggage compartment.



1. Pop out the cover in the front bumper.
2. Locate the towing eye through the bumper and screw the towing eye anticlockwise into its fixing, until secure.

TRANSPORTING THE VEHICLE

-  Only use the lashing points, or over-wheel lashings or wheel chocks. Lashing over the body or suspension is not permissible as settling of the air suspension will cause lashing straps to slacken.