

## IMPORTANT INFORMATION



**Do not rest your foot on the brake pedal whilst the vehicle is in motion.**



**Never allow the vehicle to coast (freewheel) with the engine switched off. The engine must be running to provide full braking assistance. The brakes will still function with the engine off, but far more pressure will be required to operate them.**



**If the red brake warning lamp illuminates, safely bring the vehicle to a stop, as quickly as possible and seek qualified assistance.**



**Never place non-approved floor matting or any other obstructions under the pedals. This restricts pedal travel and braking efficiency.**

Driving through heavy rain or water can have an adverse effect on braking efficiency. Under such circumstances, it is recommended that you lightly apply the brakes intermittently, to dry the brakes.

## HILL START ASSIST

Hill start assist activates when starting a hill ascent from a stationary position. When the brake pedal is released, Hill start assist smoothly releases the brake pressure, allowing the vehicle approximately 2 seconds to move away without rolling backwards.

Any fault with Hill start assist will be indicated by the Dynamic Stability Control (DSC) warning lamp being illuminated and a message in the Message centre. See **46, DYNAMIC STABILITY CONTROL (DSC) (AMBER)**.

## EMERGENCY BRAKE ASSIST (EBA)

If the driver rapidly applies the brakes, EBA automatically boosts the braking force to its maximum, in order to bring the vehicle to a halt as quickly as possible. If the driver applies the brakes slowly, but conditions mean that ABS operates on the front wheels, EBA will increase the braking force in order to apply ABS control to the rear wheels.

EBA stops operating as soon as the brake pedal is released.

A fault with the EBA system is indicated by the brake warning lamp (see **45, BRAKE (AMBER)**) illuminating and an associated warning message. Drive with care, avoiding heavy brake application and seek qualified assistance.

## ELECTRONIC BRAKE-FORCE DISTRIBUTION (EBD)

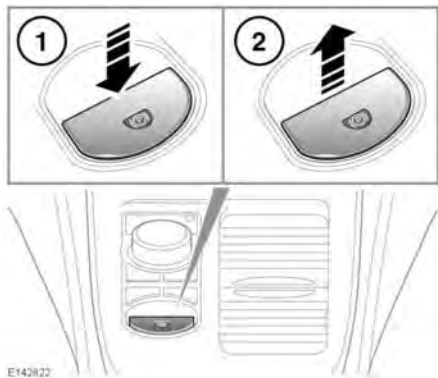
EBD controls the balance of braking forces supplied to the front and rear wheels, in order to maintain maximum braking efficiency.

If the vehicle has a light load (only the driver in the vehicle for example), EBD will reduce the braking force applied to the rear wheels. If the vehicle is heavily laden, EBD will allow greater braking force to the rear wheels.

A fault with the EBD system is indicated by the brake warning lamp (see **44, BRAKE (RED)**) illuminating and an associated warning message. Gently and safely stop the vehicle and seek qualified assistance.

## ELECTRIC PARKING BRAKE (EPB)

**!** The parking brakes operate on the rear wheels. Therefore, secure parking of the vehicle is dependent on being on a hard and stable surface.



The switch which operates the EPB is mounted on the centre console, to the rear of the gear selector.

**To disengage the EPB (1):** With the ignition system on, or with the engine running, apply the brake pedal and press down on the EPB switch.

The Drive away release feature allows the EPB to release automatically as the vehicle is driven away.

If the EPB is applied while the vehicle is stationary and **D** or **R** is selected, applying the throttle will automatically release the EPB.

**Note:** Automatic release of the EPB is only possible when the driver's door is closed, or the driver's seat belt is buckled.

The EPB is also automatically released when the gear selector is moved from the **P** position.

If the EPB is inadvertently applied when the vehicle is moving at above 3 km/h (1.8 mph), **Caution! Park Brake Applied** is displayed in the Message centre, the warning indicator in the Instrument panel will illuminate and a warning chime will sound.

If the EPB is applied while the vehicle is moving, releasing the switch or pressing the accelerator will disengage the EPB.

**Note:** If the accelerator pedal is already pressed before the EPB switch has been pulled up, the EPB will be applied.

**Note:** If the vehicle is in motion, the EPB should only be used as an emergency brake.

**!** Always apply the EPB when the vehicle is parked.

**To engage the EPB (2):** Pull the EPB switch upwards and release. The switch will return to the neutral position.

The EPB warning lamp in the Instrument panel will illuminate. See **45, PARKING BRAKE (RED)**.

The warning lamp in the Instrument panel will remain on for a short time, if the EPB is applied when the ignition system is reverted to Convenience mode.

If a fault in the system is detected, **Park Brake Fault** or **Cannot Apply Park Brake** will be displayed in the Message centre. Seek qualified assistance as soon as possible.

If the battery has been discharged or disconnected, **Apply Foot And Park Brake** will be displayed in the Message centre when the ignition is next switched on. Press the brake pedal and pull the EPB switch up to apply the EPB. This is required to reset the EPB system. The EPB will now function correctly.