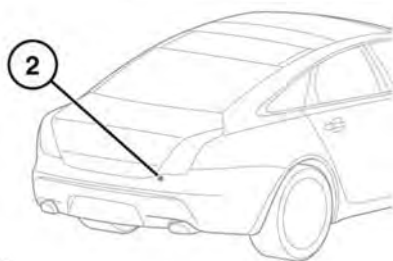


OPENING AND CLOSING THE LUGGAGE COMPARTMENT

- ❗ Do not open the luggage compartment if a cycle rack is fitted. Remove any cycles and/or racks before opening the luggage compartment.
- ❗ The Smart key may not be detected if it is placed within a metal container, or if it is shielded by a device with a back-lit LCD screen, such as a smart phone, laptop (including in a laptop bag), games console, etc.
- ❗ The vehicle must not be driven with the luggage compartment lid unlatched and not completely closed.
- ❗ Any items placed in the luggage compartment should be arranged to allow the lid to be completely closed and securely latched.
- ❗ Do not repeatedly attempt to close the luggage compartment after it automatically re-opens, or the latch may overheat. If the cause of the automatic re-opening cannot be determined, then unlock all of the doors and the luggage compartment with the Smart key. Make sure that all of the doors, the bonnet, and the luggage compartment are completely closed and then lock the vehicle again with the Smart key.



E142723

The luggage compartment can be opened using the appropriate button on the Smart key (1), or via Keyless entry. It can also be opened using the exterior release (2), provided the doors are unlocked and the gear selector is in Park (P).

To close the luggage compartment, lower the luggage compartment lid to the fully latched/closed position.

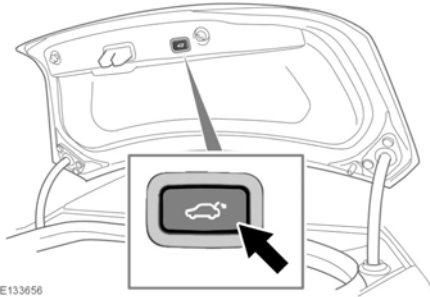
Powered luggage compartments can also be opened by pressing the interior release button, located on the driver's side lower fascia. See **280, DRIVER CONTROLS**. When the lid is fully open, press the button again to close.

Note: If the button is pressed again, before the luggage compartment lid is fully open, then movement of the lid will stop.

Luggage compartment



While the powered luggage compartment is open, the locking latch is exposed. Do not attempt to manually close the latch, as it may also automatically soft-close and trap items or body parts.



Powered luggage compartments can also be closed by pressing the luggage compartment close button.

Note: *If an obstruction is detected, the powered luggage compartment lid will return to the fully open position. Remove any obstruction and then press the close button again.*

If the luggage compartment lid is opened, after the vehicle has been Single locked (See **9, SINGLE LOCKING**) or Double locked (See **9, DOUBLE LOCKING**), make sure of the following to successfully close and re-lock the luggage compartment:

The Smart key needs to remain outside and at a distance of less than 1m from the rear of the vehicle when closing the luggage compartment lid; either manually or when using the powered luggage compartment close button.

The hazard warning lamps will flash once to confirm the vehicle is locked.

If a valid Smart key is detected within the vehicle, or a valid Smart key is not detected within a metre of the rear of the vehicle, then the luggage compartment lid will re-open to the unlatched position and an audible mislock warning will sound. This will also prevent the operation of the close button, for vehicles with a powered luggage compartment lid.

Note: *Do not store any valid Smart keys inside the vehicle.*

LUGGAGE COMPARTMENT OPENING HEIGHT

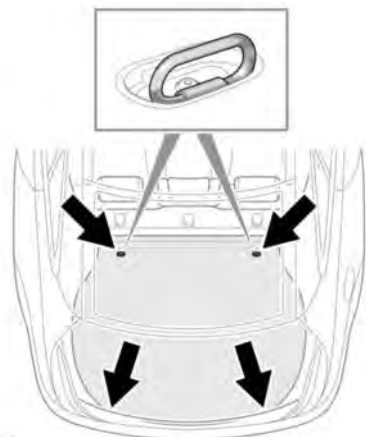
It is possible to set the maximum height to which the luggage compartment lid will open. This is useful in parking areas with very low roofs or just for ease of use.

- Open the luggage compartment lid to the position which you want to set as the maximum height.
- Press and hold (for 10 seconds) the luggage compartment close button.
- Close the luggage compartment, then open again to check that it opens to the programmed height.

The maximum opening height is now set.

To reset the maximum opening height to full, repeat the process, but fully open the luggage compartment lid before pressing and holding the button.

LUGGAGE ANCHOR POINTS



E132491

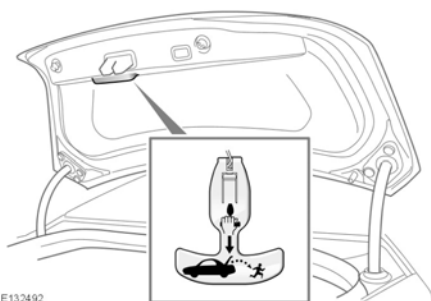
 **All items carried in the vehicle should be properly secured.**

Four load securing points are provided in the rear luggage area to assist in safely securing items.

Note: A range of approved luggage retention accessories are available from your retailer/ Authorised Repairer.

LUGGAGE COMPARTMENT EMERGENCY RELEASE

The mechanical luggage compartment release provides a means of escape in the event of someone being locked in the luggage compartment. Adults are advised to familiarise themselves with the operation of the release handle.



E132492

The release handle glows in the dark and is located on the inside of the luggage compartment lid. To open the luggage compartment from the inside, pull the handle while pushing the luggage compartment lid upwards.

Return the handle to its stowage position after use.

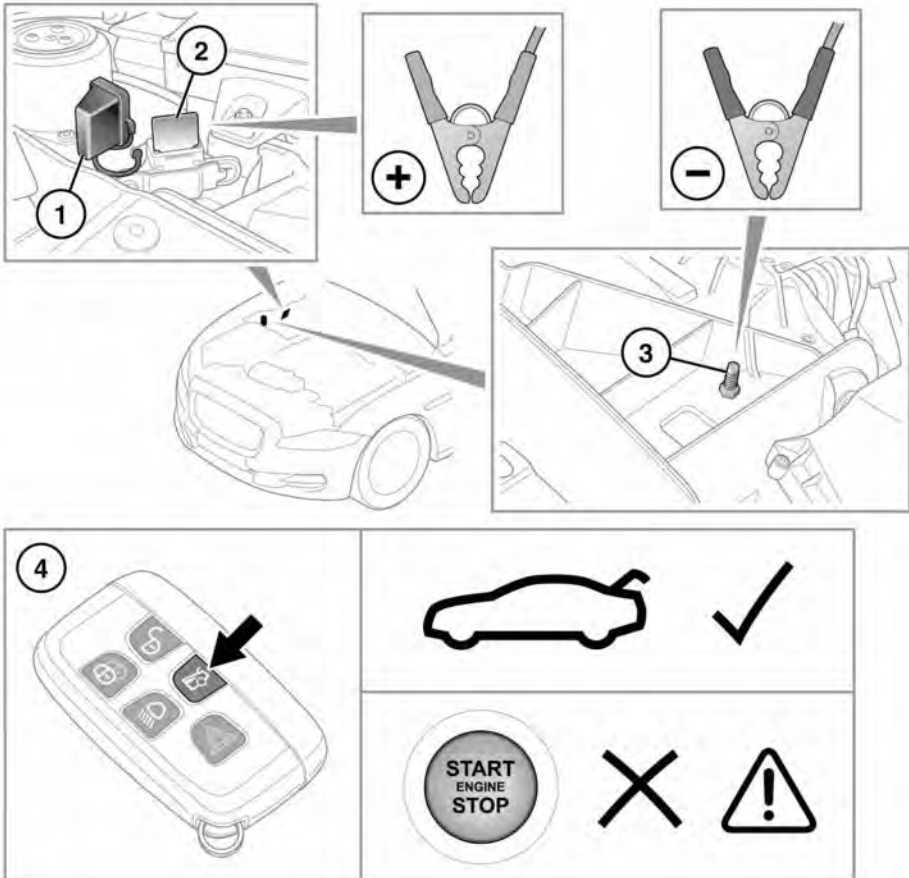
Luggage compartment

LUGGAGE COMPARTMENT RELEASE WHEN BATTERY IS DISCHARGED

If the battery becomes discharged when the luggage compartment is shut, it will be necessary to supply power to the release circuit in order to open it.




Supplying power to the release circuit in the following manner may cause a fuse to blow. For this reason it is recommended that the following procedure is only carried out by suitably qualified persons.



E142724

With the bonnet open and the engine cover removed (see **216, FUSE BOX LOCATIONS**), connect jump lead cables to a suitable 12v supply, then proceed as follows:

1. Remove the cover from the positive terminal.

2. Attach the positive jump lead clamp to the positive terminal.
 3. Attach the negative jump lead clamp to the earthing post.
 4. Press the luggage compartment release button on the remote control.
-  Do not attempt to start the vehicle with power supplied in this way.