

## CHILD SAFETY LOCKS



E 153716



If children are to be carried in the rear seat positions, it is recommended that the rear door interior handles are disabled.

Press the switch to activate the child door locks and to also inhibit the rear windows. The LED indicator will illuminate when active and a message will be displayed in the Message centre.

To switch off, press the switch again. The LED lamp will extinguish and a message will display in the Message centre.

## CHILD SEATS



**For optimum safety, children should travel in the rear of the vehicle at all times; front passenger seat travel is not recommended. However, if it is essential that a child travels in the front (not permitted in Australia), set the vehicle's seat fully rearward and seat the child in an approved forward-facing child seat. Do not use a rearward-facing child seat - an inflating airbag could impact with the seat and cause serious injury.**



**Do not use a forward-facing child seat until the child using it is above the minimum weight of 9 kg and able to sit up unaided. Up to the age of two, a child's spine and neck are not sufficiently developed to avoid injury in a frontal impact.**



**Do not allow a baby or infant to be held or carried on the lap. The force of a crash can increase effective body weight by as much as thirty times, making it impossible to hold onto the child. At all times, children should be restrained in age and size appropriate child seats to reduce the risk of death or serious injury in a crash.**



**Children could be endangered in a crash if their child restraints are not properly secured in the vehicle. Always follow the instructions that accompany the child seat carefully.**



**Children typically require the use of a booster seat appropriate to their age and size, thereby enabling the seat belts to be properly fitted, reducing the risk of injury in a crash. Children could be endangered in a crash if their child restraints are not properly secured in the vehicle.**




**Do not use a child seat that hooks over the seatback. This type of seat cannot be satisfactorily secured and is unlikely to be safe for your child.**

The seat belts fitted to your vehicle are designed for adults and larger children. For their safety, it is very important for all infants and children under 12 years of age to be restrained in a suitable child safety seat, appropriate to their age and size.

If it is essential that a child travels in the front passenger seat (and national or state legislation permits this), Jaguar Land Rover Limited recommends that the following preparations are made before fitting the child restraint:

- Adjust the front passenger seat fully rearwards.
- Adjust the lumbar support to its minimum support position.
- Adjust the seat cushion to its highest position. If cushion front tilt adjustment is possible, adjust it to its lowest position.
- Adjust the seatback to an upright position to support the child restraint.
- Adjust the seat belt upper anchorage to its lowest position.

 **Extreme hazard! Do not use a rearward facing child restraint on a seat protected by an airbag in front of it!**

 **NEVER use a rearward facing child restraint on a seat protected by an ACTIVE AIRBAG in front of it, DEATH or SERIOUS INJURY to the CHILD can occur.**



E132397


This symbol, affixed to the front door B-post on the passenger side, warns against the use of a rearward-facing child seat in the front passenger seat, when a front passenger airbag is fitted and operational.




E145193

This symbol, affixed to the passenger side sun-visor, warns against the use of a rearward-facing child seat in the front passenger seat, when a front passenger airbag is fitted and operational.

## CHILD SEAT POSITIONING

 **Crash statistics show that children are safest when properly restrained in a child or infant restraint system that is secured in a rear seating position.**

 **Seat belts (or suitable child restraints) should be used by all vehicle occupants, for every trip, no matter how short. Failure to do so will greatly increase the risk of death or serious injury in the event of an accident.**

Information given within the table is correct at the time of going to press. However, availability of child restraints may change. Please consult your Retailer/Authorised Repairer for the latest recommendation.

**Note:** The information contained in the following table may not be applicable to all countries. If you are in any doubt regarding the type and fitment of child seats, seek advice from your Retailer/Authorised Repairer.

**Note:** Ages given are approximate. In case of doubt, the child's weight, not age, should be used when considering an appropriate child seat.

# Child safety

**Note:** The legislation which governs how and where children should be carried when travelling in a vehicle, is subject to change. It is the responsibility of the driver to comply with all regulations in force.

Mass group	Seating positions			
	Front passenger*	Rear outboard**	Rear centre	Rear centre***
<b>0</b> = Up to 10 kg 0 to 9 months	<b>X</b>	<b>U</b>	<b>U</b>	<b>X</b>
<b>0+</b> = Up to 13 kg 0 to 18 months	<b>X</b>	<b>U</b>	<b>U</b>	<b>X</b>
<b>I</b> = 9 to 18 kg 9 months to 4 years	<b>UF</b>	<b>U</b>	<b>U</b>	<b>X</b>
<b>II</b> = 15 to 25 kg 4 to 9 years	<b>UF</b>	<b>U</b>	<b>U</b>	<b>X</b>
<b>III</b> = 22 to 36 kg 8 to 12 years	<b>UF</b>	<b>U</b>	<b>U</b>	<b>X</b>

**U** = Suitable for universal category restraints approved for this mass group.

**UF** = Suitable for forward-facing Universal category restraints approved for this mass group.

**X** = Not suitable for child restraint fitment in this mass group.

\* The front passenger seat should be positioned fully rearward, the seat cushion to its highest position and the seatback adjusted to an upright position to support the child restraint. If the head restraint has been removed, make sure that it is refitted before the seat is used by a passenger.

\*\* For vehicles fitted with adjustable second row seats, adjust the seatback to the upright position to support the child restraint.

\*\*\* For vehicles fitted with Executive class rear seats, the centre position is unsuitable for both forward and rearward-facing child seats.

When installing a child seat in the rear, the front seat must be moved forward and upwards to install any rearward-facing child seat. Care must be taken not to load any part of the child seat when repositioning the front seat. The space available for front seat occupants will be reduced by the installation of any rearward-facing child seat.

## ISOFIX Child seat positioning

Mass group as shown on the child restraint	Size classes	Fixtures	Second row outboard seats	Recommended child restraint system
<b>Carrycot</b>	F	ISO/L1	X	-
	G	ISO/L2	X	-
<b>0</b> Up to 10 kg 0 to 9 months	E	ISO/R1	IL	Britax/Römer Baby Safe Plus with Baby-Safe ISOFIX Base
<b>0+</b> Up to 13 kg 0 to 18 months	E	ISO/R1	IL	
	D	ISO/R2	IL	-
	C	ISO/R3	IL	-
<b>I</b> 9 to 18 kg 9 months to 4 years	D	ISO/R2	IL	-
	C	ISO/R3	IL	-
	B	ISO/F2	IUF	Britax/Römer Baby Duo Plus
	B1	ISO/F2X	IUF	
	A	ISO/F3	IUF	
<b>II/III</b> 15 to 36 kg 4 to 12 years	-	-	-	-

**IUF** = Suitable for ISOFIX forward child restraint systems of universal category, approved for use in this mass group.

**IL** = These ISOFIX child restraint systems are of the specific vehicle, restricted or semi-universal categories.

**X** = Not suitable for ISOFIX child restraint fitment in this mass group.

**Note:** The information contained in the above table may not be applicable to all countries. If you are in any doubt regarding the type and fitment of child seats, seek advice from your Retailer/Authorised Repairer.

**Note:** Ages given are approximate. In case of doubt, the child's weight, not age, should be used when considering an appropriate child seat.

**Note:** ISOFIX anchorages are provided for second row outer seating positions. ISOFIX child restraints should be securely attached, following the manufacturer's instructions at these locations only.

## RECOMMENDED CHILD SEATS

Child size/age	Recommended seat
Groups 0 and 0+	Britax/Römer Baby Safe Plus
Group I	Britax/Römer Duo Plus
Group II and III	Britax/Römer Kid Plus

## CHILD RESTRAINT CHECK LIST

Every time a child travels in the vehicle, observe the following:

- Use appropriate child restraints.
- Carefully follow the instructions provided by the manufacturer of the restraint system.
- Adjust the harnesses for every child on every journey.
- Make sure that all slack is removed from the adult seat belt.
- Always attach the top tether when installing an ISOFIX seat (If applicable to seat type).
- Always check the security of the child restraint.
- Do not dress a child in bulky clothing, or place any objects/padding between the child and the restraint.
- Regularly check the fit and condition of child restraints. If the fit is poor, or wear/damage is visible, replace the restraint immediately.
- Set a good example - always wear your seat belt.
- For child seats fitted with a support leg, adjust the leg so that it rests firmly on the floor.
- For some child seats, it may be necessary to remove the head restraint to make sure of a stable fit. Always make sure the head restraint is stowed correctly, and refit the head restraint after the child seat is removed.



**Child restraint anchorages are designed to withstand only those loads imposed by correctly fitted child restraints. Under no circumstances are they to be used for adult seat belts, harnesses, or for attaching other items or equipment to the vehicle.**

## BOOSTER SEATS

In a situation where a child is too large to fit into a child safety seat, but is still too small to safely fit the 3-point belt, a booster seat is recommended for maximum safety. Follow the manufacturer's instructions for fitting and use, then adjust the seat belt to suit.

## INSTALLING ISOFIX CHILD RESTRAINTS



**Do not attempt to fit ISOFIX restraints to the centre rear seating position. The anchor bars are not designed to hold an ISOFIX restraint in this position.**



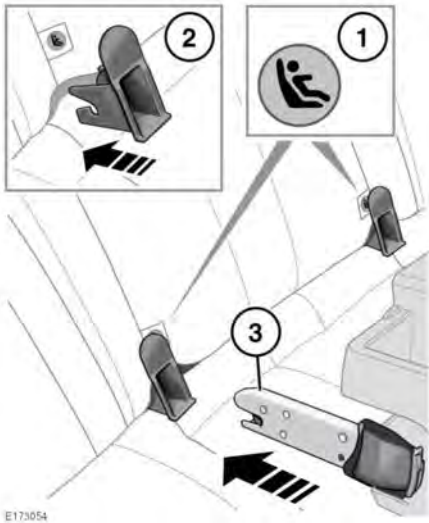
**If the restraint is not correctly anchored, there is a significant risk of injury to the child in the event of a collision or emergency braking.**



**WARNING: child restraint anchorages are designed to withstand only those loads imposed by correctly fitted child restraints. Under no circumstances are they to be used for adult seat belts, harnesses, or for attaching other items or equipment to the vehicle.**

ISOFIX anchorages are provided at the outer seat positions on the second row seats.

For vehicles fitted with Executive class rear seats, before fitting an ISOFIX seat, adjust the seatback to the fully upright position.



E173054

To install an ISOFIX child seat:

1. This symbol is shown on a label sewn into the seats to indicate the position of the LATCH lower anchorages.
2. Locate the lower anchor bars which are accessible through the gap between the seatback and seat base. Insert the protective guides supplied with the child seat, as shown. The insertion positions for the guides are identified by the ISOFIX labels.
3. Slide the child seat locking mechanism into the protective sleeves and onto the anchor bars.

If an upper tether is fitted to the child seat, see **33, INSTALLING TETHER ANCHORAGE CHILD RESTRAINTS**.

Test the security of the child restraint. To do this, attempt to pull the restraint away from the vehicle's seat and twist the restraint from side to side. Even if the restraint appears secure, you should still check the anchor points visually, to make sure they are correctly attached.

**Note:** Always make sure that if an upper tether is provided, it is fitted and tightened correctly.

**Note:** For child restraints fitted with a support leg, adjust the leg so that it rests firmly on the floor.

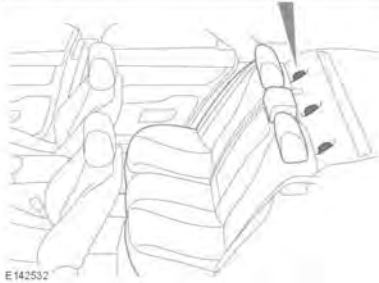
## INSTALLING TETHER ANCHORAGE CHILD RESTRAINTS

- ⚠ Always follow the child seat or restraint system manufacturer's instructions when fitting tether straps.
- ⚠ When fitting a child seat or restraint system, always pass the tether strap over the top of the seatback and beneath the head restraint.
- ⚠ If removing a head restraint in order to fit a child restraint, always secure the head restraint when storing it.

The vehicle is equipped with tether anchorage points, located behind the rear seat head restraints. These should be used to attach straps from child seats or child restraint systems.

Always fit the upper tether anchorage and tighten correctly.

# Child safety



E142532



**Make sure that the rear seatback is securely and completely latched to the vehicle, in the normal upright position.**

1. Pass the tether strap over the seatback and beneath the head restraint\*.
2. Release the access cover for the relevant tether anchorage point.
3. Attach the tether strap hook to the tether anchorage point. Make sure that the tether strap hook is facing towards the back of the seat.
4. Tighten the tether strap according to the child seat, or the child restraint, manufacturer's instructions.

**Note:** \*On vehicles fitted with Executive class rear seats, raise the centre armrest to the upright position and pass the strap over the top.