

RUNNING-IN

This vehicle is built using high-precision manufacturing methods, but the moving parts of the engine must still bed-in relative to one another. The process occurs mainly in the first 3 000 km (2 000 miles) of operation.

During this Running-in period of 3 000 km (2 000 miles) you should:

- Avoid frequent cold starts followed by short-distance driving.
- Preferably take longer trips.
- Do not use full throttle during starts and normal driving.
- Avoid continuous operation at high engine speed and abrupt stops.
- Do not participate in track days, sports driving schools, or similar.
In addition, specifically up to 2 000 km (1 200 miles):
- Drive at varying engine and road speeds, but do not exceed an engine speed of 4 500 rpm (revolutions per minute) and a road speed of 170 km/h (105 mph).

From 2 000 km (1 200 miles) to 3 000 km (2 000 miles):

- Engine and road speeds can be increased gradually.
- Engine speeds in excess of 5 000 rpm should only be used briefly e.g., when overtaking.

At all times, not just during the Running-in period:

- Do not exceed 4 000 rpm until the engine has reached full operating temperature.
- Avoid labouring the engine by operating the engine in too high a gear at low speeds.

PARTS AND ACCESSORIES



Do not fit non-approved parts and accessories or carry out non-approved alterations or conversions.



Your vehicle is not designed for use with a roof rack. Do not fit a roof rack to the vehicle, as damage may result.

AIRBAG SYSTEM



The components that make up the airbag system are sensitive to electrical or physical interference, either of which could easily damage the system and cause inadvertent operation or a malfunction of the airbag module.

To prevent malfunction of the airbag system always consult your retailer/Authorised Repairer before fitting any of the following:

- Electronic equipment such as a mobile phone, two-way radio or in-car entertainment system.
- Accessories attached to the front of the vehicle.
- Any modification to the front of the vehicle.
- Any modification involving the removal or repair of any wiring or component in the vicinity of any of the airbag system components, including the steering wheel, steering column, pillar trim, roof lining, door trim, instrument or fascia panels.
- Any modification to the fascia panels or steering wheel.

ANTI-THEFT SYSTEM



No modifications or additions should be made to the anti-theft system. Such changes could cause the system to malfunction.

OWNER MAINTENANCE



Any significant or sudden drop in fluid levels, or uneven tyre wear, should be reported to a qualified technician without delay.

In addition to the routine services and inspections, a number of simple checks must be carried out more frequently. These checks can be carried out by the owner and advice is given on the pages that follow.

DAILY CHECKS

- Operation of lamps, horn, direction indicators, wipers, washers and warning indicators.
- Operation of seat belts and brakes.
- Look for fluid deposits underneath the vehicle that might indicate a leak. Condensation drips from the air conditioning are normal.

WEEKLY CHECKS

- Engine oil level.
- Engine coolant level.
- Brake fluid level.
- Power steering fluid level.
- Screen washer fluid level.
- Tyre pressures and condition.
- Operate air conditioning.

Note: The engine oil level should be checked more frequently if the vehicle is driven for prolonged periods at high speeds.

EXHAUST FILTER

Diesel vehicles equipped with a Diesel Particulate Filter (DPF) have more efficient emissions control. The particles in the exhaust gases are collected in the exhaust filter during normal driving.

Cleaning of the exhaust filter, also known as regeneration, occurs automatically approximately every 300-900 km depending on driving conditions, and requires the engine to reach normal operating temperature.

This self-cleaning takes place when the vehicle is driven steadily at speeds between 60 km/h to 112 km/h (40 mph to 70 mph). This process normally takes 10-20 minutes. It is possible that the self-cleaning will occur at lower vehicle speeds, but the process may take a little longer at a 50 km/h (30 mph) average speed.

Exhaust filter self-cleaning

Some driving conditions (e.g., frequently driving short distances, in slow-moving traffic, or in cold weather) may not provide sufficient opportunity to begin the exhaust filter self-cleaning automatically. When this occurs, a warning icon is displayed in the message centre, depending on status, as follows:

- **Amber:** Exhaust filter self-cleaning is required. Driving above 60 km/h (40 mph) for 20 minutes should clean the filter.

Note: Failure to follow the above driving approach to enable filter self-cleaning, may result in reduced vehicle performance. The amber exhaust filter icon will eventually be replaced by a red exhaust filter icon, and the filter may need to be replaced.

- **Red:** The exhaust filter is full; contact a Retailer/Authorised Repairer as soon as possible.

Note: A small increase in fuel consumption may be noticed temporarily during exhaust filter self-cleaning.

Note: If diesel fuel with high sulphur content is used regularly, the exhaust may emit a cloud of smoke at the start of the self-cleaning process. This is the sulphur deposit being burnt off and is no cause for concern. If possible, only use low sulphur diesel fuel.



ARDUOUS DRIVING CONDITIONS

When a vehicle is operated in severe or arduous conditions, more frequent attention must be paid to the servicing requirements. Refer to your Service book for further details, this is supplied in the vehicle's literature pack, or contact a Retailer/Authorised Repairer for advice.

SAFETY IN THE GARAGE

-  If the vehicle has been driven recently, do not touch exhaust and cooling system components until the engine has cooled.
-  Never leave the engine running in an unventilated area.
-  Do not work beneath the vehicle with a jack as the only means of support.
-  Keep your hands and clothing away from drive belts, pulleys and fans. Some fans may continue to operate after the engine has stopped.
-  Remove metal wrist bands and jewellery, before working in the engine compartment.
-  Do not touch electrical leads or components while the engine is running, or with the starter switch turned on.
-  Do not allow tools or metal parts of the vehicle to make contact with the battery leads or terminals.

FUEL SYSTEM

-  Under no circumstances should any part of the fuel system be dismantled or replaced by anyone other than a suitably qualified vehicle technician.
-  Ensure sparks and naked lights are kept away from the engine compartment.



Wear protective clothing, including, where practicable, gloves made from an impervious material.

USED ENGINE OIL



Prolonged contact with engine oil may cause serious skin disorders, including dermatitis and cancer of the skin. Always wash thoroughly after contact.

OPENING THE BONNET



Do not attempt to open the bonnet if the pedestrian protection system has deployed.



1. Pull the bonnet release handle located in the left-side front footwell.
2. Lift the bonnet safety catch lever located below the centre point of the bonnet, and raise the bonnet.

CLOSING THE BONNET

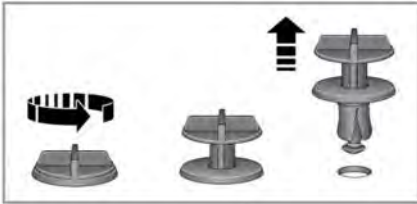


Do not drive with the bonnet retained by the safety catch alone.

Maintenance

1. Lower the bonnet until the safety catch engages. Using both hands, press the bonnet down until the catches click.
2. Check that both catches are fully engaged by attempting to lift both sides of the front edge of the bonnet. This should be free from all movement.

UNDER BONNET COVERS - REMOVAL



E155249

1. Release and remove the turnbuckle clips securing the cover.
2. Lift the edge of the cover and slide to remove.

UNDER BONNET COVERS - REFITTING

- ⚠ Before refitting the underbonnet cover, make sure that no pipes, cables or other items, have been trapped between the cover and casing.

1. Place the cover over the casing, ensuring all holes are aligned.
2. Push the cover down firmly, insert and fasten the turnbuckle clips.

UNBLOCKING WASHER JETS

- ⚠ **Do not operate the washer jets during adjustment. Windscreen washer fluid may cause irritation to the eyes and skin. Always read and observe the washer fluid manufacturers instructions.**

If a washer jet becomes blocked, use a thin strand of wire to unblock the jet by inserting the wire into the jet. Make sure that the wire is completely removed after unblocking.

CHANGING A BULB

- ⚠ Always replace bulbs with the correct type and specification. If you are in any doubt contact your Retailer/Authorised Repairer for advice.

XENON LAMPS

- ⚠ **Replacement or maintenance of Xenon lamps should only be carried out by suitably qualified personnel.**
- ⚠ **High voltage is required to ignite the Xenon lamps.**
- ⚠ **Xenon lamp units operate at a very high temperature. Make sure that the lamp units have cooled before attempting to touch them.**

HEADLAMP BULB REPLACEMENT

- ⚠ Removal of the headlamp unit should only be attempted by a qualified technician. If in doubt, consult your Retailer/Authorised Repairer.

REAR LAMP REMOVAL

- ⓘ Removal of the rear lamp unit should only be attempted by a qualified technician. If in doubt, consult your Retailer/Authorised Repairer.

HIGH LEVEL BRAKE LAMP REPLACEMENT

- ⓘ Removal of this lamp unit should only be attempted by a qualified technician. If in doubt, consult your Retailer/Authorised Repairer.

WIPERS SERVICE POSITION

Note: The Smart key must remain in the vehicle while the wiper blades are replaced.

- ⓘ To prevent damage to the bonnet, make sure that the wiper arms are in the 'service' position before lifting the wiper blades away from the windscreen.

Before changing a wiper blade, the wiper arms must be set in the 'service' position as follows:

1. Make sure the ignition is switched off.
2. Switch the ignition on, then off again.
3. Immediately pull the wiper/washer control towards the driver (as if to command a single wipe), hold this position while switching the ignition on again. The wipers will move to their service position.
4. When the new parts have been fitted, switch the ignition off. This will return the wipers to the park position.

Note: Fit only replacement wiper blades that are identical to the original specification.

SUNROOF RESET

If the battery is disconnected, or the power supply is interrupted, while the sunroof is partially open it will need to be reset.

Once the power supply is restored, reset the sunroof as follows:

1. Switch the ignition on.
2. Fully close the sunroof.
3. Press the front of the sunroof switch, and hold for 45 seconds.
4. After 45 seconds the sunroof will begin to move. Keep the front of the switch pressed until the sunroof and the roof blinds have fully opened, then closed.
5. Once the open/close cycle has completed and the sunroof has stopped moving, release the switch.

The sunroof can now be operated as normal.

WINDOW RESET

The windows will need to be reset if the battery is disconnected, becomes discharged, or the power supply is interrupted.

Once the power supply is restored, reset the windows, as follows:

1. Make sure that the engine is running.
2. Close the window fully, and release the switch.
3. Lift the switch to the close position and hold for 2 seconds.
4. Release the switch.
5. Repeat the lift and release procedure (steps 3 and 4) twice more.
6. Open the window fully.
7. Lift and release the switch to check the One-touch window operation, see **61, ONE-TOUCH WINDOW OPERATION**.
8. Repeat the procedure on each window.

Note: It is advisable to have the engine running while resetting the windows, to make sure that a minimum of 12 volts is available at all times.

SIDE WINDOW BLIND RESET

Rear door electric sun blinds

Note: Make sure that the One-touch window operation is functional, (see **61, ONE-TOUCH WINDOW OPERATION**) and the window is fully closed.

Reset the sun blind, as follows:

1. Lift the window switch to move the sun blind to the fully up position.
2. Press and hold down the window switch for 15 seconds to enter the initialisation mode (this will move the blind down).
3. Release the switch.
4. Press and hold down the window switch for 2 seconds.
5. Lift and hold the window switch until the sun blind reaches the fully up position.
6. Press and release the window switch to check the operation of the One-touch function, see **61, SIDE WINDOW BLINDS**.

WARNING TRIANGLE

If supplied, the warning triangle is located in the luggage compartment, attached to an anchor point.

FIRST AID KIT

If supplied, the first aid kit is strapped to the side of the luggage compartment.

FIRE EXTINGUISHER

For certain markets, fire extinguishers are fitted to comply with local legislation. Please note it is the owner's responsibility to make sure the fire extinguisher is maintained in accordance with the manufacturer's instructions.

It is also the responsibility of the owner to make sure the pressure is at a suitable operating pressure as indicated on the pressure gauge. Use only Jaguar approved fire extinguishers.

If supplied, the fire extinguisher will be located either in the luggage compartment, or mounted to the front passenger seat.