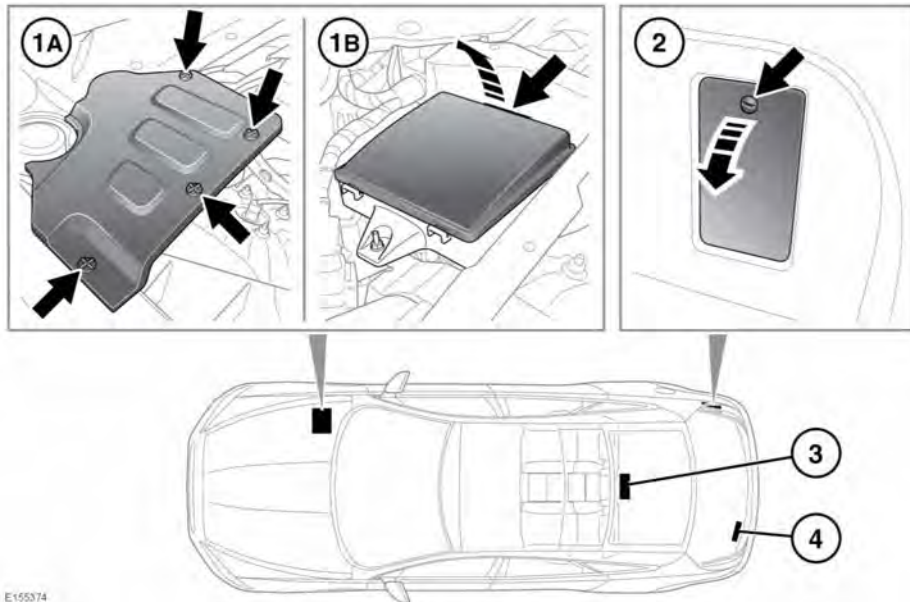


## FUSE BOX LOCATIONS



E155374

⚠ When a fuse box lid is removed, take care to protect the box from moisture, and refit the lid at the earliest opportunity.

There are 4 separate fuse boxes fitted to the vehicle, each one containing fuses protecting a different group of circuits.

1. Engine compartment fuse box.
  - A. Undo the 4 turn-buckles and remove the engine cover to access the fuse box.
  - B. Remove the fuse box cover.
2. Luggage compartment fuse box.
3. Passenger compartment fuse box.  
The fuse box is accessed through the flap behind the rear centre armrest.
4. Secondary luggage compartment fuse box.

To access the fuse box, raise the luggage compartment floor trim.

## CHANGING A FUSE

- ⚠ Always switch off the ignition system and the affected electrical circuit, before replacing a fuse.
- ⚠ Fit Jaguar approved replacement fuses of the same rating and type, or fuses of matching specification.
- ⚠ If the replacement fuse blows after installation, the system should be checked by your Retailer/Authorised Repairer.

**Note:** Jaguar recommend that owners do not remove or replace relays. It is recommended that you seek qualified assistance in the event of a relay failure.

Spare fuses are located in the tool tray situated under the floor in the luggage compartment.

## ENGINE COMPARTMENT FUSE BOX

Fuse No	Rating (amps)	Fuse Colour	Circuit
F1	-	-	-
F2	10A	Red	Engine management sensors (petrol & GTDI).
	5A	Tan	Engine and E-box cooling fans.
F3	25A	Clear	Ignition coils (petrol & GTDI).
	5A	Tan	Valve control (diesel).
F4	30A	Green	Power wash pump.
F5	40A	Orange	Main electrical power to module (petrol).
	20A	Yellow	ECM (GTDI).
	5A	Tan	Diesel Exhaust Fluid (DEF) (diesel).
F6	40A	Orange	Right-side front screen heater and heated wiper.
F7	30A	Green	Traction control module (AWD).
F8	10A	Red	Oxygen sensor (petrol & GTDI).
	5A	Tan	Active engine mount.
F9	10A	Red	Engine cooling fan, Engine management (petrol & GTDI).
F10	-	-	-
F11	15A	Blue	DEF (diesel).
	-	-	Spare (petrol & GTDI).
F12	20A	Yellow	Oxygen sensors Bank A (petrol & GTDI).
	10A	Red	Engine management sensors.
F13	25A	Clear	ECM (diesel).
	20A	Yellow	Oxygen sensors Bank B (petrol).
	-	-	Spare (GTDI).
F14	5A	Tan	Adaptive Cruise Control (ACC).
F15	20A	Yellow	Oxygen sensors (petrol). DEF NOX (diesel).
	-	-	Spare (GTDI).
F16	-	-	Spare.
F17	-	-	-

Fuse No	Rating (amps)	Fuse Colour	Circuit
F18	15A	Blue	Horn.
F19	30A	Green	Starter.
F20	40A	Orange	Anti-lock Brake System (ABS) pumps.
F21	25A	Clear	ABS valve.
F22	15A	Blue	Left-side LED headlamps.
F23	15A	Blue	Right-side LED headlamps.
F24	-	-	-
F25	15A	Blue	Intercooler water pump - EWP (petrol).
F26	40A	Orange	Wiper motor.
F27	5A	Tan	Monitor.
F28	15A	Blue	Transmission control module.
F29	-	-	-
F30	-	-	-
F31	-	-	-
F32	40A	Orange	Left-side heated screen.
F33	-	-	Spare.
F34	-	-	-
F35	80A	Black	Cooling fan.

## PASSENGER COMPARTMENT FUSE BOX

Fuse No	Rating (amps)	Fuse Colour	Circuit
F1	5A	Tan	RF-RX, IMS, Tyre Pressure Monitoring System (TPMS).
F2	-	-	-
F3	-	-	-
F4	5A	Tan	CAN Gateway module.
F5	5A	Tan	Dynamic Stability Control (DSC) module, Yaw rate, Steering angle sensor.
F6	5A	Tan	Fuse box engine compartment.
F7	20A	Yellow	Rear climate control.
F8	30A	Green	Front passenger's seat adjustment.
F9	5A	Tan	Electric Parking Brake (EPB).
F10	5A	Tan	Air suspension control module.
F11	-	-	-
F12	-	-	-
F13	-	-	-
F14	5A	Tan	Brake pedal switch.
F15	30A	Green	Heated rear screen.
F16	-	-	-
F17	5A	Tan	Keyless vehicle module supply.
F18	-	-	-
F19	5A	Tan	Engine control module.
F20	10A	Red	Heated steering wheel.
F21	5A	Tan	Air conditioning sensor, Front overhead console, Front dual climate control module and smog sensor.
F22	5A	Tan	Transmission control module, E-Diff, Jaguar Drive selector.
F23	5A	Tan	Headlamp levelling.
F24	5A	Tan	Right-side front and rear lamp clusters.
F25	10A	Red	Left-side front and rear lamp clusters.
F26	-	-	-

Fuse No	Rating (amps)	Fuse Colour	Circuit
F27	-	-	-
F28	20A	Yellow	Rear seat dual climate control module.
F29	20A	Yellow	Front seat dual climate control module.
F30	25A	Clear	Passenger door module.
F31	5A	Tan	Rain/light sensor.
F32	25A	Clear	Driver's door module.
F33	20A	Yellow	Front dual climate control module.
F34	10A	Red	Fuel filler flap lock.
F35	-	-	-
F36	5A	Tan	Battery back-up sounder/tilt sensor.
F37	20A	Yellow	Keyless vehicle module.
F38	15A	Blue	Front screen wash pump relay.
F39	25A	Clear	Left-side rear door module.
F40	5A	Tan	Driver's window, Clock, Switches around the Touch screen, Rear climate panel, Passenger door memory.
F41	-	-	-
F42	30A	Green	Driver's seat module.
F43	-	-	-
F44	25A	Clear	Right-side rear door module.
F45	30A	Green	Passenger front seat switch pack.
F46	30A	Green	Driver's seat module.
F47	-	-	-
F48	30A	Green	Left-side rear seat module.
F49	5A	Tan	Right-side headlamp motor.
F50	5A	Tan	Left-side headlamp motor.
F51	5A	Tan	Steering wheel switches.
F52	20A	Yellow	Front cigar lighter.
F53	20A	Yellow	Rear cigar lighter.
F54	-	-	-

# Fuses

Fuse No	Rating (amps)	Fuse Colour	Circuit
F55	20A	Yellow	Rear accessory socket.
F56	10A	Red	Restraint control module, Occupancy sensor.
F57	10A	Red	Glovebox, glovebox lamp, front and rear overhead consoles, sun visor lamps, vanity lamps.
F58	30A	Green	Right-side rear seat module.
F59	-	-	-
F60	-	-	-
F61	10A	Red	Integrated antenna unit, cluster, cluster fan.
F62	10A	Red	Climate control module.
F63	20A	Yellow	Front accessory socket.
F64	15A	Blue	Left-side rear sun blind.
F65	-	-	-
F66	5A	Tan	On-board diagnostic.
F67	-	-	-
F68	-	-	-
F69	15A	Blue	Right-side rear sun blind.

## LUGGAGE COMPARTMENT FUSE BOX

Fuse No	Rating (amps)	Fuse Colour	Circuit
F1	30A	Green	Right-side Electric Parking Brake (EPB).
F2	-	-	-
F3	-	-	-
F4	5A	Tan	Singapore road pricing.
F5	-	-	-
F6	30A	Green	Power boot lid.
F7	-	-	-
F8	5A	Tan	Telematics.
F9	-	-	-
F10	-	-	-
F11	20A	Yellow	Front heated seat.
F12	10A	Red	Seat movement logic and switch power.
F13	10A	Red	Rear seat logic.
F14	20A	Yellow	Driver's heated seat.
F15	-	-	-
F16	10A	Red	Chassis control module.
F17	10A	Red	Chassis control module (air suspension).
F18	10A	Red	Infotainment Master Controller (IMC) fan.
F19	30A	Green	Fuel pump, Body control module, LSD.
F20	-	-	-
F21	10A	Red	DiM.
F22	10A	Red	Headlamp control module, Camera, Lane change merge assist, Park aid module, Interior mirror.
F23	5A	Tan	Adaptive Cruise Control (ACC).
F24	5A	Tan	GATEWAY.
F25	5A	Tan	Air suspension module.
F26	20A	Yellow	Rear right-side Climate seat.
F27	20A	Yellow	Rear left-side Climate seat.



# Fuses

Fuse No	Rating (amps)	Fuse Colour	Circuit
F28	-	-	-
F29	-	-	-
F30	2A	Grey	VICS.
F31	40A	Green	Diesel Exhaust Fluid (DEF).
F32	30A	Green	Left-side EPB.
F33*	40A	Green	E-diff module.
F34*	40A	Green	Front blower motor.
F35*	60A	Yellow	Quiescent relay box.
F36*	40A	Green	Sunroof module.
F37*	60A	Yellow	Air suspension.
F38*	40A	Green	Power amp.
F39	-	-	-

\*Jaguar recommends that these fuses should only be serviced by a Retailer/Authorised Repairer.

## Secondary luggage compartment fuse box

Fuse No	Rating (amps)	Fuse Colour	Circuit
F1	15A	Blue	Touch screen display.
F2	10A	Red	Amplifier, Clock.
F3	-	-	-
F4	10A	Red	Phone connect view, DAB radio, Navigation, TV.
F5	15A	Blue	Integrated audio module.
F6	15A	Blue	Rear seat entertainment.
F7	-	-	-
F8	-	-	-
F9	-	-	-
F10	-	-	-
F11	-	-	-

<b>Fuse No</b>	<b>Rating (amps)</b>	<b>Fuse Colour</b>	<b>Circuit</b>
F12	-	-	-
F13	-	-	-
F14	-	-	-
F15	15A	Blue	Heating and ventilation module.
F16	-	-	-