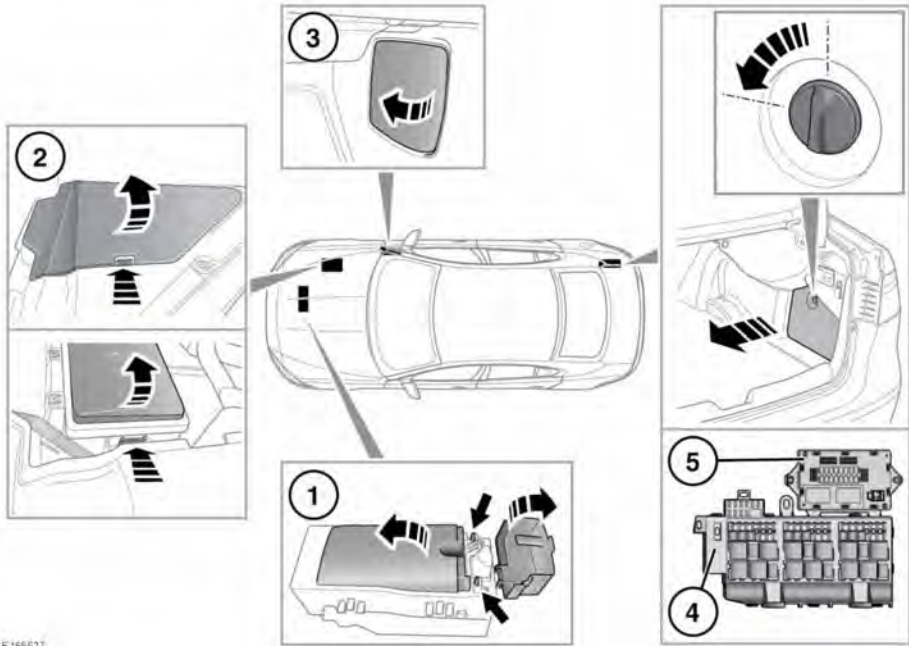


FUSE BOX LOCATIONS



E165527

! When a fuse box lid is removed, take care to protect the box from moisture, and refit the lid at the earliest opportunity.

There are 5 separate fuse boxes fitted to the vehicle, each one containing fuses protecting a different group of circuits.

1. Engine compartment front fuse box:

- Lift up the positive booster terminal cover. Press and hold the fuse box cover retaining clips and then lift to open the cover.

2. Engine compartment rear fuse box:

- Remove the under bonnet cover by lightly pressing and holding the retaining clip, then lift to release and pull to remove. See **187, UNDER BONNET COVERS - REMOVAL**.

Press and hold the fuse box cover retaining clip to lift and pull to remove.

3. Passenger compartment fuse box, located on the right-side 'A' pillar, below the fascia:

- Use a suitable tool to unclip and release the rearward edge of the panel, and then pull to remove.

Note: Note the orientation of the panel to aid refitting.

4. Luggage compartment lower fuse box:




- The fuse box is accessed by removing the right-side luggage compartment access panel. Turn the retaining lug 90 degrees counter-clockwise to release and remove the access panel.

Note: This fuse box also contains spare fuses and the vehicle's fuse removal tool.

5. Luggage compartment upper fuse box:

- The fuse box is accessed by removing the right-side luggage compartment access panel. Turn the retaining lug 90 degrees counter-clockwise to release and remove the access panel.

CHANGING A FUSE

-  Always switch the ignition system and the affected electrical circuit off, before replacing a fuse.
-  Only fit Jaguar approved replacement fuses of the same rating and type, or fuses of a matching specification.
-  If the replacement fuse blows after installation, the system should be checked by a Retailer/Authorised Repairer.

Note: Jaguar recommends that only qualified personnel should remove or replace relays.

The vehicle's fuse removal tool and some spare fuses, are located in the luggage compartment lower fuse box.

ENGINE COMPARTMENT FUSE BOX

Engine compartment front fuse box

Fuse No	Rating (Amps)	Fuse Colour	Circuit
1	5	Tan	Left-side headlamp motor
2	5	Tan	Headlamp control module
3	5	Tan	Right-side headlamp motor
4	-	-	-
5	-	-	-
6	30	Green	Headlamp power wash
7	-	-	-
8	-	-	-
9	-	-	-
10	15	Blue	Intercooler water pump

Engine compartment rear fuse box

Fuse No	Rating (Amps)	Fuse Colour	Circuit	Not applicable to:
11	15	Blue	Exhaust Gas Recirculation (EGR) valve. Engine management (MAF/IAT sensor). Front heated oxygen sensor (H02S).	2.0L petrol.
12	15	Blue	Variable Valve Timing (VVT). Fuel volume control valve. Active vanes motor.	2.0L petrol.
13	10	Red	Neutral position sensor. Fan cooling box. Pump leak detection. Temperature sensor. Fuel type sensor. Engine management (MAF/IAT sensor). Fuel leak detection.	-
14	15	Blue	Compressor Shut Off Valve (CSOV). Compressor Recirculation Valve (CRV). Exhaust Gas Recirculation Cooler Bypass Valve (EGRCBV). Variable Valve Timing (VVT).	3.0L petrol. 2.0L petrol.
	10	Red	Compressor Shut Off Valve (CSOV). Compressor Recirculation Valve (CRV). Exhaust Gas Recirculation Cooler Bypass Valve (EGRCBV). Turbo Shut Off Valve (TSOV).	3.0L petrol. Diesel.
15	10	Red	Cooling fan control unit. Fan cooling-E box. Water in diesel sensor. Active engine mounting solenoid. Motor cooling fan. Purge control valve.	-
16	25	Clear	Engine control module. Capacitor. Ignition coil.	Diesel.
17	20	Yellow	Exhaust sensors.	-
18	20	Yellow	Exhaust sensors.	2.0L petrol.
19	20	Yellow	Exhaust sensors.	2.0L petrol. Diesel.
20	-	-	-	-
21	-	-	-	-
22	5	Tan	Intercooler water pump.	2.0L petrol.
23	5	Tan	Engine control module. Starter monitor. Voltage Quality Module (VQM).	-

Fuse No	Rating (Amps)	Fuse Colour	Circuit	Not applicable to:
24	15	Blue	Electronic Transmission Switch (ETS). Transmission Control Module (TCM).	Manual transmission.
25	30	Green	Starter Motor.	Vehicles without Intelligent stop/start.
26	-	-	-	-
27	25	Clear	Transfer Case Control Module (TCCM).	-
28	-	-	-	-

PASSENGER COMPARTMENT FUSE BOX

Fuse No	Rating (Amps)	Fuse Colour	Circuit
1	20	Yellow	Sunroof
2	5	Tan	Brake pedal switch
3	5	Tan	Immobiliser Antenna Unit (IAU)
4	5	Tan	J1962 Connector
5	5	Tan	Battery backup sounder
6	20	Yellow	Second row auxiliary power socket
7	20	Yellow	Cubby box auxiliary power socket
8	30	Green	Left front seat
9	30	Green	Right front seat
10	30	Green	Left front seat
11	30	Green	Right front seat
12	-	-	-
13	20	Yellow	Front auxiliary power socket
14	-	-	-
15	-	-	-
16	5	Tan	Battery voltage feed
17	5	Tan	Door handles antenna
18	15	Blue	Horns
19	-	-	-
20	20	Yellow	Driver's Heated/Climate seat
21	20	Yellow	Front passenger's Heated/Climate seat
22	25	Clear	Right front door module
23	25	Clear	Left rear door module
24	25	Clear	Right rear door module
25	25	Clear	Left front door module
26	-	-	-
27	-	-	-
28	10	Red	Heated steering wheel

Fuse No	Rating (Amps)	Fuse Colour	Circuit
29	5	Tan	Keyless vehicle logic module
30	20	Yellow	Keyless vehicle latch module
31	5	Tan	Singapore road pricing
32	5	Tan	Tyre Pressure Monitoring System (TPMS)
33	15	Blue	Air Conditioning (A/C) compressor clutch
34	-	-	-
35	-	-	-

LUGGAGE COMPARTMENT FUSE BOX

Luggage compartment lower fuse box

Fuse No	Rating (Amps)	Fuse Colour	Circuit
1	20	Yellow	Luggage compartment auxiliary power socket.
2	5	Tan	Rear Heated seats control module.
3	20	Yellow	Left Heated rear seat.
4	20	Yellow	Right Heated rear seat.
5	10	Red	Adaptive dynamic suspension. Electronic differential.
6	10	Red	Message centre module.
7	-	-	-
8	25	Clear	Trailer.
9	10	Red	Diesel Exhaust Fluid (DEF) tank module.
10	25	Clear	Diesel Exhaust Fluid (DEF) heater control unit.
11	10	Red	Rear-view mirror. Blind Spot Monitoring (BSM) system. Camera.
12	10	Red	Infotainment master control fan.
13	10	Red	Heated steering wheel.
14	10	Red	Head Up Display (HUD).
15	5	Tan	Camera.
16	-	-	-
17	5	Tan	Adaptive Cruise Control (ACC).

Fuses

Fuse No	Rating (Amps)	Fuse Colour	Circuit
18	20	Yellow	Trailer.
19	-	-	-
20	10	Red	Telematics.
21	-	-	-
22	15	Blue	Driver's door switch pack. Driver's seat control module. Driver's seat memory position switch pack. Front passenger seat control module.
23	10	Red	Rear sun blind motor.
24	20	Yellow	Rear auxiliary power socket.
25	-	-	-
26	-	-	-
27	30	Green	Deployable tow bar. Trailer.
28	30	Green	Fuel tank unit. Fuel pump driver.
29	30	Green	Powered luggage compartment lid.
30	5	Tan	Diesel pump.

Luggage compartment upper fuse box

Fuse number	Rating (Amps)	Fuse colour	Circuits protected
1	15	Blue	Touch screen. Climate control panel.
2	10	Red	Audio amplifier.
3	-	-	-
4	10	Red	Navigation. Television tuner.
5	15	Blue	Audio head unit.
6	15	Blue	Portable media connector panel.
7	-	-	-
8	-	-	-
9	-	-	-
10	-	-	-
11	-	-	-

Fuse number	Rating (Amps)	Fuse colour	Circuits protected
12	-	-	-
13	-	-	-
14	-	-	-
15	15	Blue	Heating and ventilation system.
16	20	Yellow	Auxiliary heater.