

## RUNNING-IN

This vehicle is built using high-precision manufacturing methods, but the moving parts of the engine must still bed-in, relative to each other. This process occurs mainly in the first 3 000 km of operation.

During this running-in period of 3 000 km, observe and follow the instructions below:

- Do not use full throttle during starts and normal driving.
- Avoid high engine speeds (rpm) until the engine has reached its full operating temperature.
- Avoid labouring the engine by operating the engine in too high a gear at low speeds.
- Gradually increase engine and road speeds.
- Avoid continuous operation at high engine speed and abrupt stops.
- Avoid frequent cold starts followed by short-distance driving.
- Preferably take longer trips.
- Do not participate in track days, sports driving schools or any similar events.

## SERVICE INTERVAL INDICATOR

An upcoming mileage to service countdown (from 3 200 km to 0 km) will be displayed in the Message centre, each time the ignition is switched on. When the mileage to service countdown reaches 0 km, then the **Service Required** message will be displayed, every time the ignition is switched on.

## PARTS AND ACCESSORIES



**The fitting of non-approved parts and accessories, or the carrying out of non-approved alterations or conversions, may be dangerous and could affect the safety of the vehicle and occupants, and also invalidate the terms and conditions of the vehicle's warranty.**



**Jaguar Land Rover Limited will not accept any liability for death, personal injury or damage to property, which may occur as a direct result of fitment of non-approved accessories or the carrying out of non-approved conversions to Jaguar vehicles.**



**All replacement parts for the Air Conditioning (A/C) system should be new and equivalent to the vehicle manufacturer's original equipment, while complying with the SAE Standards. Contact a Retailer/ Authorised Repairer for advice.**



This symbol may be used on an under bonnet label and is relevant to the air conditioning refrigerant fluid. The symbol identifies extremely flammable chemicals that have an extremely low flash point and boiling point, and gases that catch fire when in contact with air.

## AIRBAG SYSTEM



**The components that make up the airbag system are sensitive to electrical or physical interference, either of which could easily damage the system and cause inadvertent operation or a malfunction of the airbag module.**

# Maintenance

To prevent malfunction of the airbag system, always consult a Retailer/Authorised Repairer before fitting any of the following:

- Electronic equipment such as a mobile phone, 2-way radio, or in-car entertainment system.
- Accessories attached to the front of the vehicle.
- Any modification to the front of the vehicle.
- Any modification involving the removal or repair of any wiring or component in the vicinity of any of the airbag system components, including the steering wheel, steering column, instrument or fascia panels.
- Any modification to the fascia panels or steering wheel.

## ANTI-THEFT SYSTEM



**No modifications or additions should be made to the Anti-theft system. Such changes could cause the system to malfunction.**

## OWNER MAINTENANCE



Any significant or sudden drop in fluid levels, or uneven tyre wear, should be reported to a qualified technician without delay.

In addition to the routine services and inspections, a number of simple checks must be carried out more frequently. These checks can be carried out by the owner and advice is given on the pages that follow.

## DAILY CHECKS

- Operation of the lamps, horn, direction indicators, wipers, washers, and warning indicators.
- Operation of seat belts and brakes.
- Look for fluid deposits underneath the vehicle that might indicate a leak. Condensation drips from the Air Conditioning (A/C) system are normal.

## WEEKLY CHECKS

- Engine oil level.
- Engine coolant level.
- Brake fluid level.
- Power steering fluid level.
- Screen washer fluid level.
- Tyre pressures and condition.
- Operate the Air Conditioning (A/C).

**Note:** *The engine oil level should be checked more frequently if the vehicle is driven for prolonged periods at high speeds.*

## EXHAUST FILTER

Diesel vehicles equipped with a Diesel Particulate Filter (DPF) have more efficient emissions control. The particles in the exhaust gases are collected in the exhaust filter during normal driving.

Cleaning of the exhaust filter, also known as regeneration, occurs automatically approximately every 300-900 km depending on driving conditions, and requires the engine to reach normal operating temperature.

This self-cleaning takes place when the vehicle is driven steadily at speeds between 60 km/h to 112 km/h (40 mph to 70 mph). This process normally takes 10-20 minutes. It is possible that the self-cleaning will occur at lower vehicle speeds, but the process may take a little longer at a 50 km/h (30 mph) average speed.

## Exhaust filter self-cleaning

Some driving conditions (e.g., frequently driving short distances, in slow-moving traffic, or in cold weather) may not provide sufficient opportunity to begin the exhaust filter self-cleaning automatically. When this occurs, a warning icon is displayed in the message centre, depending on status, as follows:

- **Amber:** Exhaust filter self-cleaning is required. Driving above 60 km/h (40 mph) for 20 minutes should clean the filter.

***Note:** Failure to follow the above driving approach to enable filter self-cleaning, may result in reduced vehicle performance. The amber exhaust filter icon will eventually be replaced by a red exhaust filter icon, and the filter may need to be replaced.*

- **Red:** The exhaust filter is full; contact a Retailer/Authorised Repairer as soon as possible.

***Note:** A small increase in fuel consumption may be noticed temporarily during exhaust filter self-cleaning.*

***Note:** If diesel fuel with high sulphur content is used regularly, the exhaust may emit a cloud of smoke at the start of the self-cleaning process. This is the sulphur deposit being burnt off and is no cause for concern. If possible, only use low sulphur diesel fuel.*

## ARDUOUS DRIVING CONDITIONS

When a vehicle is operated in severe or arduous conditions, more frequent attention must be paid to the servicing requirements. Refer to your Service book for further details; this is supplied in the vehicle's literature pack or contact a Retailer/Authorised Repairer for advice.

## ROAD TESTING DYNAMOMETERS (ROLLING ROADS)

It is essential that any dynamometer testing is carried out only by a qualified person, familiar with the dynamometer testing and safety procedures practised by Retailers/Authorised Repairers.

## SAFETY IN THE GARAGE



**If the vehicle has been driven recently, do not touch exhaust and cooling system components until the engine has cooled.**



**Never leave the engine running in an unventilated area.**



**Do not work beneath the vehicle with a jack as the only means of support.**



**WARNING - THAT NO PERSON SHOULD PLACE ANY PORTION OF THEIR BODY UNDER A VEHICLE THAT IS SUPPORTED BY A JACK.**



**Keep your hands and clothing away from drive belts, pulleys, and fans. Some fans may continue to operate after the engine has stopped.**



**Remove metal wristbands and jewellery, before working in the engine compartment.**



**Do not touch electrical leads or components while the engine is running, or with the ignition switched on.**

# Maintenance



Do not allow tools or metal parts of the vehicle to make contact with the battery leads or terminals.

## FUEL SYSTEM



Under no circumstances, should any part of the fuel system be dismantled or replaced by anyone other than a suitably qualified vehicle technician.



Make sure that sparks and naked lights are kept away from the engine compartment.



Wear protective clothing, including, where practical, gloves made from an impervious material.

## USED ENGINE OIL



Prolonged contact with engine oil may cause serious skin disorders, including dermatitis and cancer of the skin. Always wash thoroughly after contact.



It is illegal to pollute drains, water courses, or soil. Use authorised waste disposal sites to dispose of used oil and toxic chemicals.

## OPENING THE BONNET



E164056

1. Pull the handle, located in the left-side front footwell, to release the bonnet securing latch.
2. Push up on the safety catch lever, located below the centre point of the bonnet, and then raise the bonnet.

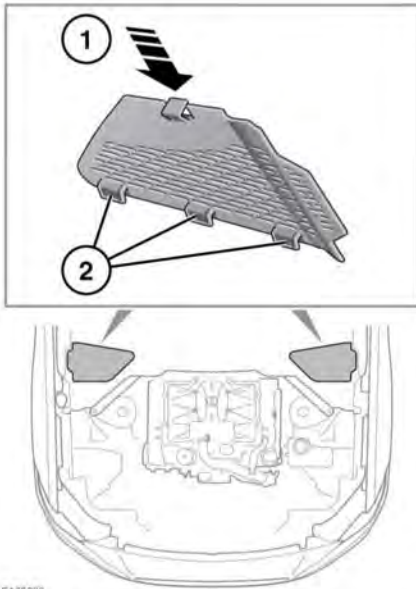
## CLOSING THE BONNET



**Do not drive with the bonnet retained by the safety catch alone.**

1. Lower the bonnet until the safety catch engages. Using both hands, press the bonnet down until the bonnet securing latch clicks to confirm full engagement.
2. Check that the securing latch is fully engaged, by attempting to lift both sides of the front edge of the bonnet. This should be free from all movement.

## UNDER BONNET COVERS - REMOVAL



E165288

Open the bonnet and follow the procedure below:

1. Lightly push back and hold the cover's front retaining lug.
2. Lift up the cover and slide forwards to release the rear locating lugs.

## UNDER BONNET COVERS - REFITTING

Open the bonnet and follow the procedure:

1. Locate the cover's rear locating lugs into the vehicle's panel.
2. Lightly press down the cover to engage the front retaining lug into the vehicle's panel.

**Note:** The cover should be a flush fit and aligned to the vehicle's panel.

## CHANGING A BULB



If the exterior lamps have just been switched off, give the bulbs time to cool. Handling them when hot may cause personal injury.



To avoid personal injury, due to any possible residual electrical current, make sure not to touch any electrical connectors or circuit boards while changing a bulb. If removal of the outboard rear lamp is required, always wear appropriate gloves when disconnecting the wiring loom from the rear lamp.



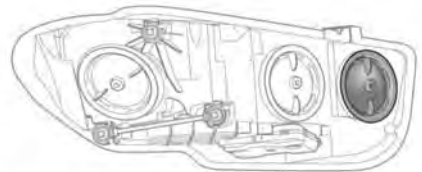
Always replace bulbs with the correct type and specification. If you are in any doubt, contact a Retailer/Authorised Repairer for advice.



Before attempting a bulb change, make sure that the ignition and the affected lamp are switched off. If the circuit remains live, a short circuit can occur, which may damage the vehicle's electrical system.

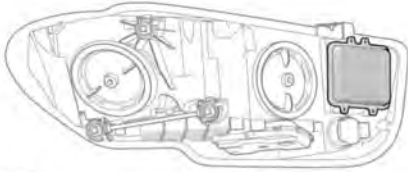
Not all bulbs are renewable. For the specification of those which are, see **254, BULB SPECIFICATION**.

All the other lamps should only be renewed or serviced by qualified personnel.



E165947

Vehicles with Halogen headlamps will have a removable inboard access cover, as illustrated.



E185948

Vehicles with Xenon headlamps will not have a removable inboard access cover. Xenon headlamps have an igniter module, as illustrated.

**⚠** Replacement or maintenance of Xenon lamps should only be carried out by suitably qualified personnel. See 188, XENON LAMPS.

## XENON LAMPS

**⚠** Replacement or maintenance of Xenon lamps should only be carried out by suitably qualified personnel.

**⚠** High voltage is required to ignite the gas and metal vapour, which is used to power Xenon lamps. Contact with this voltage can cause serious injury.

**!** The Daytime running lamp, within the Xenon headlamp unit, is a Light Emitting Diode (LED) lamp. Failure of the Daytime running lamp will require a complete Xenon headlamp unit to be installed by qualified personnel.

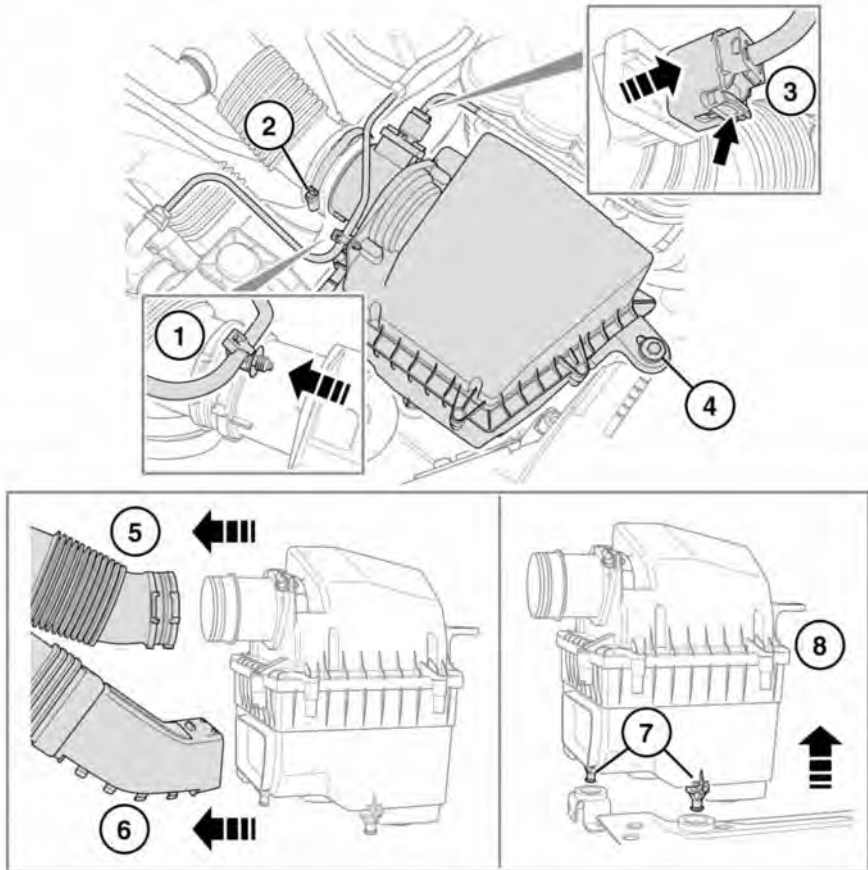
Correct disposal of the Xenon lamp unit should be referred to a Retailer/Authorised Repairer or the local authority.

The direction indicator bulb, within the Xenon headlamp, is renewable. See 192, FRONT DIRECTION INDICATOR BULB REPLACEMENT.

## HEADLAMP BULB REPLACEMENT - HALOGEN HIGH BEAM

**!** See 187, CHANGING A BULB.

## Air cleaner removal



E169042

The air cleaner will have to be removed to allow access to the left side High beam/Daytime running lamp bulb holder/bulb unit on all engine variants. This will also apply to the right side for Vehicles with a 3.0L petrol engine.

Open the bonnet and follow the procedure below:

1. Lightly pull the coolant pipe/retaining lug, to release it from the air cleaner.

**Note:** Do not use excessive force, as this may damage the coolant pipe.

2. Continually turn the air pipe clamp bolt counter-clockwise to loosen and release.

**Note:** Do not remove the air pipe clamp.

3. Press up and hold the lug at the base of the electrical connection and then lightly pull to release it from the air cleaner.

- Continually turn the air cleaner retaining bolt counter-clockwise to remove.
- Lightly pull the upper air pipe to release it from the air cleaner.
- Lightly pull the lower air pipe away, to release it from the air cleaner.
- Lift up the air cleaner casing, to release the 2 locating/securing lugs.

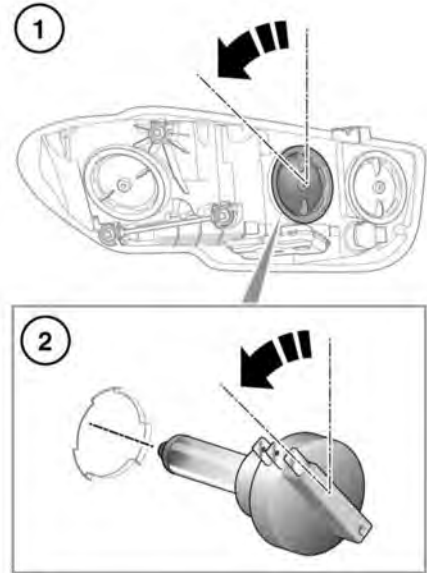
**Note:** If the rubber grommets remain attached to the air cleaner, then remove them and refit to the vehicle body prior to refitting the air cleaner.

- Remove the air cleaner from the vehicle.

⚠ Observe the position of the coolant pipe, wiring loom and both air pipes during the removal and refitting of the air cleaner.

Reverse the removal procedure to refit the air cleaner.

## High beam/Daytime running lamp bulb holder/ bulb unit removal



E164694

**Note:** The bulb holder and the bulb are one complete unit. The bulb has 2 filaments, one for High beam and the other is for the halogen Daytime running lamp.

Open the bonnet and follow the procedure below:

- Rotate the headlamp cover, approximately 45 degrees counter-clockwise to release and then lightly pull away to remove it from the headlamp.

**Note:** Note the orientation of the cover to aid refitting.

- Rotate the bulb holder/bulb unit, approximately 45 degrees counter-clockwise to release and then pull to remove it from the headlamp.

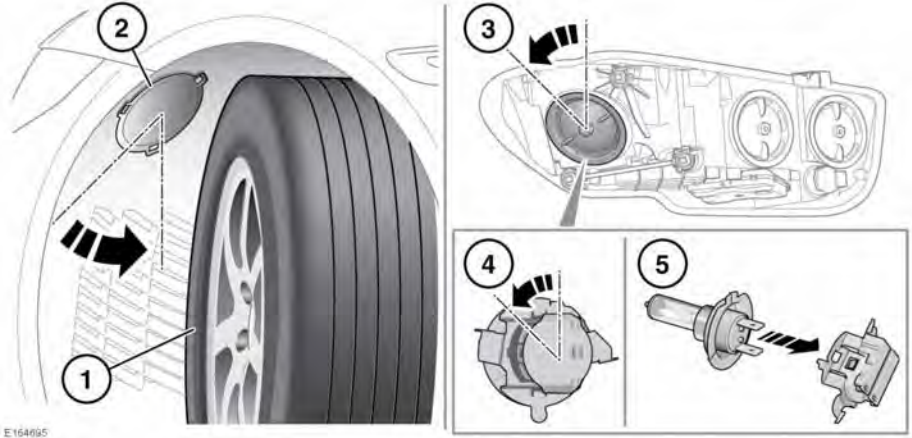


**Note:** *Note the orientation of the bulb holder/bulb unit to aid refitting.*

Reverse the removal procedure to install a new bulb holder/bulb unit.

## HEADLAMP BULB REPLACEMENT - HALOGEN LOW BEAM

⚠ See 187, CHANGING A BULB.



⚠ **To prevent the vehicle from moving and causing personal injury, make sure that the Electric parking brake is applied.**

1. To allow for greater access, start the engine and turn the steering onto the relevant full lock. Switch off the ignition.

2. Rotate the vehicle cover, approximately 45 degrees counter-clockwise to release and then pull to remove.

3. Rotate the headlamp cover, approximately 45 degrees counter-clockwise to release and then pull to remove.

**Note:** Note the orientation of the cover to aid refitting.

4. Rotate the bulb holder, approximately 45 degrees counter-clockwise to release and then pull to remove.

**Note:** Note the orientation of the bulb holder to aid refitting.

5. Pull the bulb to remove it from the bulb holder.

**Note:** Note the orientation of the bulb to aid refitting.

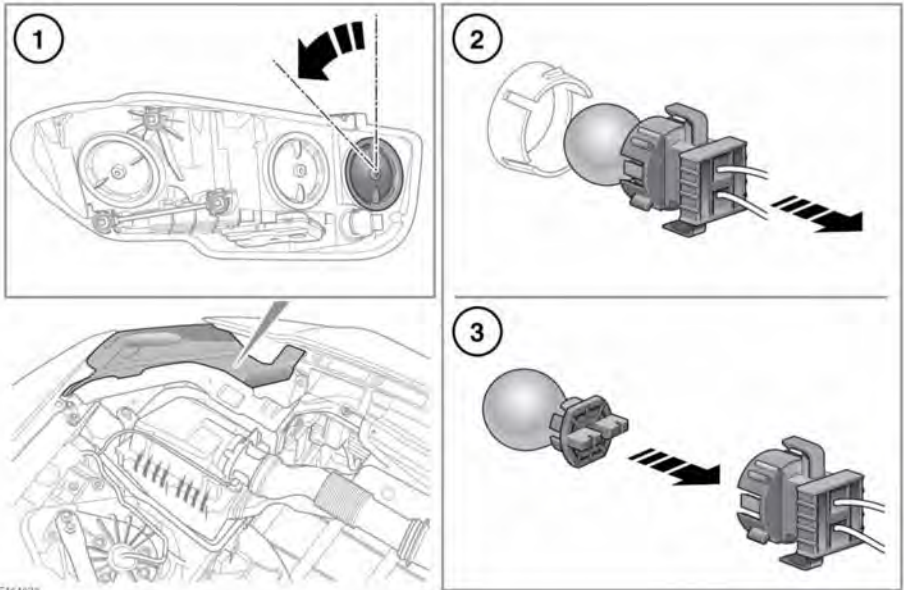
Reverse the removal procedure to install a new bulb.

⚠ Make sure to straighten the steering system before driving the vehicle.

## FRONT DIRECTION INDICATOR BULB REPLACEMENT

⚠ See 187, CHANGING A BULB.

## Halogen headlamp direction indicator bulb



E164626

1. Rotate the headlamp cover, approximately 45 degrees counter-clockwise to release and remove.

**Note:** Note the orientation of the cover to aid refitting.

2. Pull the bulb holder to remove it from the headlamp.

**Note:** Note the orientation of the bulb holder to aid refitting.

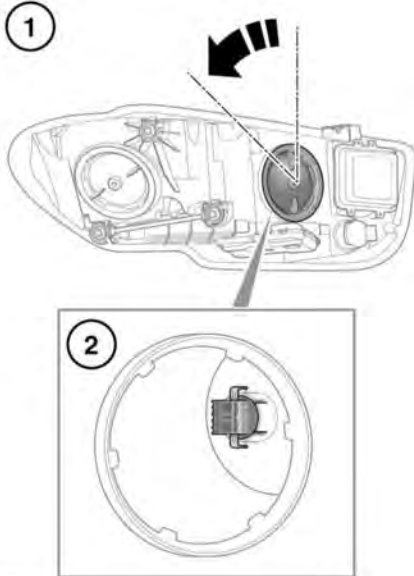
3. Pull the bulb to remove it from the bulb holder.

**Note:** Note the orientation of the bulb to aid refitting.

Reverse the removal procedure to install a new bulb.

## Xenon headlamp direction indicator bulb

The air cleaner will have to be removed to allow access to the left side headlamp and also for the right side headlamp for vehicles with a 3.0L petrol engine. See the air cleaner removal information, **188, HEADLAMP BULB REPLACEMENT - HALOGEN HIGH BEAM.**



1. Rotate the headlamp cover, approximately 45 degrees counter-clockwise to release and remove.

**Note:** Note the orientation of the cover to aid refitting.

2. Pull the bulb holder to remove it from the headlamp.

**Note:** Note the orientation of the bulb holder to aid refitting.

3. Pull the bulb to remove it from the bulb holder.

**Note:** Note the orientation of the bulb to aid refitting.

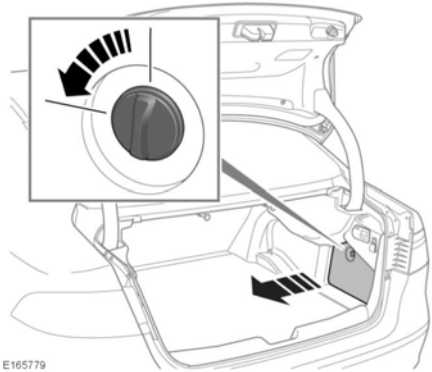
Reverse the removal procedure to install a new bulb.

## REAR LAMP REMOVAL

See **187, CHANGING A BULB.**

Identify the location/s of the bulb/s to be changed and then release/remove the relevant luggage compartment access panel.

### Right side access panel

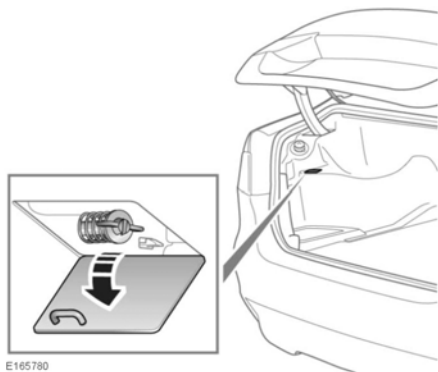


E165779

Turn the retaining lug, 90 degrees counter-clockwise, to release, then lower and lift to remove.

Reverse the removal procedure to refit.

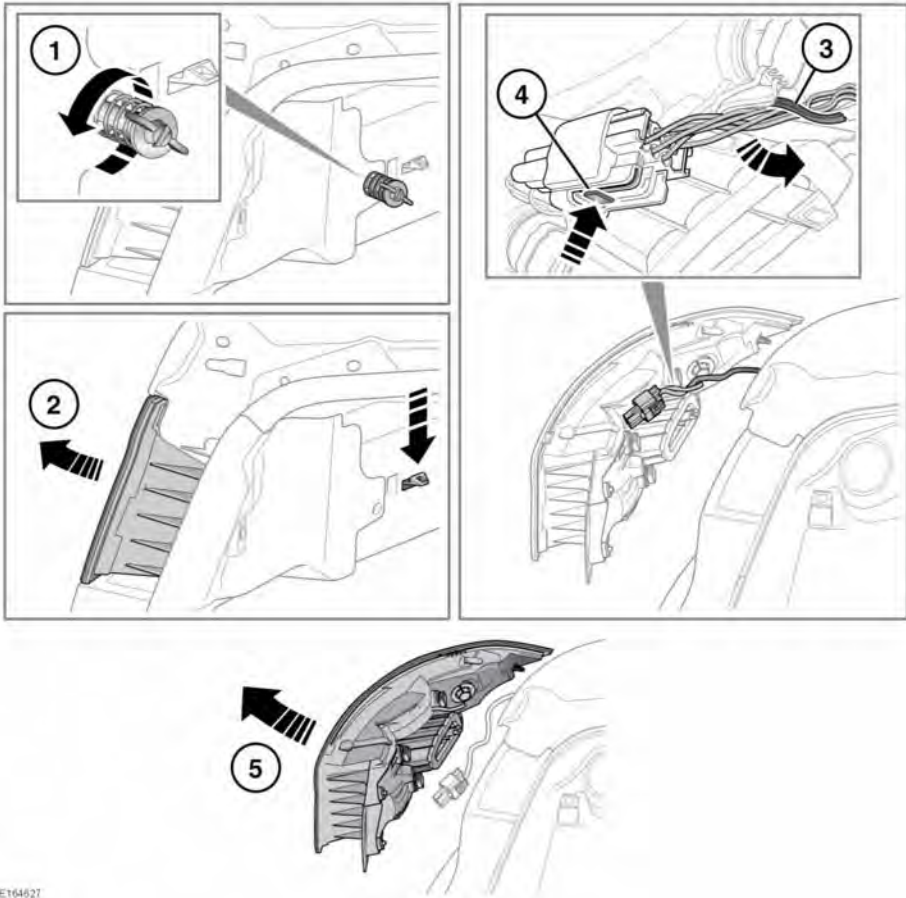
## Left side access panel



E165780

Turn the retaining lug, 90 degrees counter-clockwise, to release and then pull to lower. Reverse the removal procedure to refit.

## Rear lamp removal



E164627

1. Continually rotate the rear lamp's retaining bolt, counter-clockwise, until fully released and then remove.
2. Lightly press down and hold the rear lamp's retaining lug and then carefully move the rear lamp a small distance away from the vehicle. This will now allow access to the rear lamp's electrical connection.

- !** Do not completely remove the rear lamp from the vehicle until the vehicle's wiring loom has been released and disconnected, as this may damage the vehicle's wiring loom and the rear lamp.
3. Release the vehicle's wiring loom from the rear lamp's retaining lug.

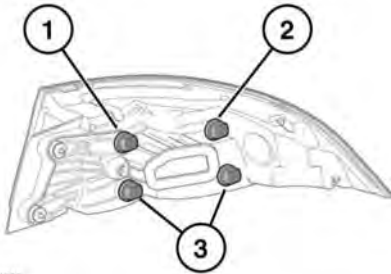
- Press and hold the retaining lug at the base of the electrical connector and then pull to release it from the rear lamp.
- Completely remove the rear lamp from the vehicle.

**!** Make sure that the rear lamp is placed on a soft surface that will not damage or scratch the rear lamp lens.

Reverse the removal procedure to refit.

## REAR LAMP BULB REPLACEMENT

**!** See 187, CHANGING A BULB.



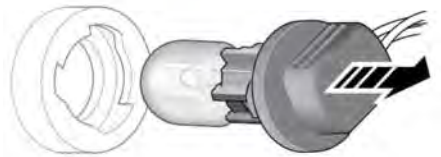
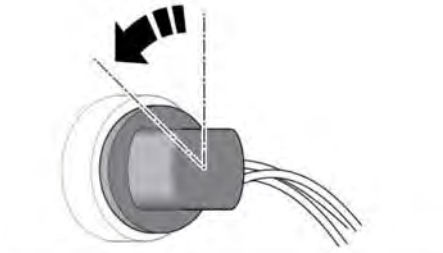
E164622

Remove the relevant rear lamp. See 194, REAR LAMP REMOVAL.

The bulb locations are as follows:

- Reverse lamp.
- Direction indicator lamp.
- Brake lamps.

**Note:** Always replace both brake lamp bulbs.



E164624

Identify the location/s of the bulb/s to be changed and then follow the procedure below:

- Rotate the bulb holder, approximately 45 degrees counter-clockwise, then pull to remove it from the rear lamp.

**Note:** Note the orientation of the bulb holder to aid refitting.

- Pull the bulb to remove it from the bulb holder.

**Note:** Note the orientation of the bulb to aid refitting.

Reverse the whole removal process to install a new bulb.

## REAR DIRECTION INDICATOR AND REVERSING LAMP BULB REPLACEMENT

See 197, REAR LAMP BULB REPLACEMENT.

## BRAKE LAMP BULB REPLACEMENT

See 197, REAR LAMP BULB REPLACEMENT.

## UNBLOCKING WASHER JETS

- ❗ Do not operate the washer jets during adjustment. Windscreen washer fluid may cause irritation to the eyes and skin. Always read and observe the washer fluid manufacturer's instructions.

If a washer jet becomes blocked, use a thin strand of wire to unblock the jet by inserting the wire into the jet. Make sure that the wire is completely removed after unblocking.

## WIPERS SERVICE POSITION

- ❗ To prevent damage to the bonnet, make sure that the wiper arms are in the 'service' position before lifting the wiper blades away from the windscreen.

**Note:** *The Smart key must remain in the vehicle while the wiper blades are replaced.*

Before changing a wiper blade, the wiper arms must be set in the 'service' position as follows:

1. Make sure the ignition is switched OFF.
2. Switch the ignition ON and then OFF again.
3. Immediately press the wiper stalk to its lowest position (as if to command a single wipe, see **62, WIPER OPERATION**), hold this position while switching the ignition ON again.  
The wipers will move to their service position.
4. When the new parts have been fitted, switch the ignition OFF. This will return the wipers to the park position.

**Note:** *Only fit replacement wiper blades that are identical to the original specification.*

## SUNROOF RESET

Make sure that the conditions, listed below, are met before carrying out the sunroof reset procedure:

- The ambient air temperature needs to be within the range of 5°C to 65°C.
- The vehicle has to be stationary.
- The vehicle's battery is sufficiently charged and the electrical connections are good.

Reset the sunroof as follows:

1. Switch the ignition on.
2. Manually fully close the sunroof and the sunblind. Release the switches. See **73, ELECTRIC WINDOWS**.



**Before closing the sunroof, make sure that no occupants have any part of their body in a position where it could be trapped. Even with an Anti-trap system death or serious injury could occur. See 75, SUNROOF ANTI-TRAP MECHANISM.**

3. Fully press and hold the front of the sunroof switch for 10 seconds, to start the reset cycle. Continue to hold the front of the sunroof switch.

**Note:** *If the switch is released, then the whole procedure will have to be repeated.*

4. . The reset cycle will:
  - Fully open the sunblind.
  - Fully open and then fully close the sunroof.
  - Fully close the sunblind.
5. Once the reset cycle has completed and the sunblind has stopped moving, release the switch.



**The Anti-trap system is disabled during the reset cycle. Make sure that no occupants have any part of their body in a position where it could be trapped.**

The sunroof and the sunblind can now be operated as normal.



## WINDOW RESET

The windows will need to be reset if the battery is disconnected, becomes discharged, or the power supply is interrupted.

Once the power supply is restored, reset the windows as follows:

1. Close the window fully.
2. Release the switch, then lift it to the close position and hold for 2 seconds.
3. Release the switch.
4. Repeat the lift and release procedure twice more.
5. Test the window for correct manual and automatic switch operation. See **73, ELECTRIC WINDOWS**.
6. Repeat the procedure on each window.

**Note:** *It is advisable to have the engine running while resetting the windows, to make sure that a minimum of 12 volts is available at all times.*