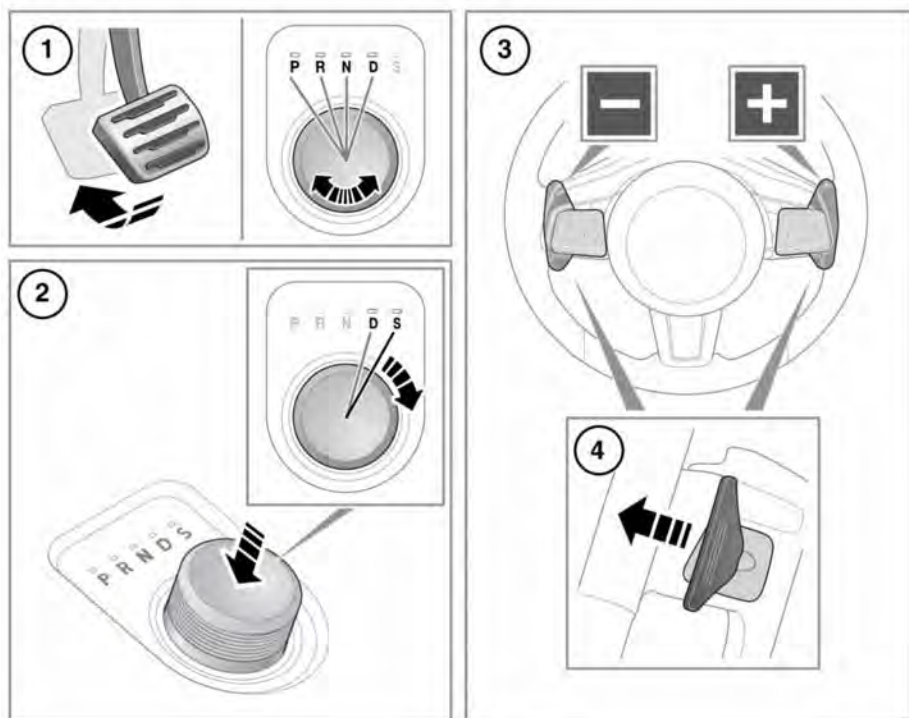


AUTOMATIC TRANSMISSION



E186313

The rotary gear selector rotates in either direction. At engine start-up, the rotary gear selector elevates up from its lowered, stowed position.

The gear selection status of the rotary gear selector and the steering wheel's gear selector paddles (Sequential shift), will be displayed in the Message centre.

1. To select Drive (**D**), Neutral (**N**), Reverse (**R**) or Park (**P**), press the brake pedal and rotate the gear selector. The relative LED indicator lamp, by the gear selector, will illuminate.

While in **D**, the gear changing is fully automatic. The gear change shift points are determined by the accelerator pedal position and the vehicle's current speed.

To achieve rapid acceleration (kick-down) while in **D**, quickly press the accelerator pedal to its full travel. When the accelerator pedal is relaxed, normal automatic gear changing will resume.

Note: Before selecting **D**, **R**, **N** or **P**, make sure the vehicle is stationary and the brakes are applied.

Note: If pressure is applied to the gear selector before the brake pedal is applied, the selected gear may not be available. In this situation, remove the pressure from the gear selector, make sure the brake pedal is applied and then select the required gear again.

2. To select Sport (**S**) mode from **D**, press the gear selector down and rotate to **S**. The relative LED by the gear selector will illuminate.

The transmission will stay in the lower gears for longer, improving mid-range performance.

To deselect **S** mode, rotate the gear selector back to **D**.

3. Sequential shift gear selector paddles: Allows manual gear selection, while the selector is in either the **D** or **S** positions. Lightly pull the left paddle for down-shifts or lightly pull the right paddle for up-shifts. Sequential shift can be effective when rapid acceleration and engine braking are required.

A gear shift indicator warning lamp will illuminate briefly at the recommended (up-shift) gear change point. See **54, GEAR SHIFT (GREEN)**.

Note: If continued use of the Sequential shift gear selector paddles is required, select **S**.

Note: The gear shift paddles can be configured to be **Active in S only** or **Active in D & S** via the **Driving Features** menu. See **47, INSTRUMENT PANEL MENU**.

4. To manually change gear, briefly pull the relevant steering wheel gear shift paddle.

To exit the manual gear selection mode, either pull and hold the up-shift paddle for approximately one second (to return directly to automatic operation in **D** or **S**) or, if in **S**, rotate the rotary gear selector to the **D** position.



Never select **P** while the vehicle is in motion.



Never select **R** while the vehicle is in forward motion.



Never select a forward gear while the vehicle is moving backwards.



Do not rev the engine or allow it to run above normal idle speed while selecting **D** or **R**, or while the vehicle is stationary with any gear selected.



Do not allow the vehicle to remain stationary with a drive gear selected and the engine running. Always select **P** or **N** if the engine is to idle for a prolonged period.

If the rotary gear selector is obstructed, remove the obstruction and then start the engine. The gear selector should elevate.

If the rotary gear selector fails to elevate and there is no obstruction, a fault in the system is indicated. The gear selector can be used in the lowered position but be aware that it will not automatically select **P** when the engine is switched off. Therefore, **P** should be selected manually. The fault should be rectified by a Retailer/Authorised Repairer at the earliest opportunity.

ROTARY GEAR SELECTOR

Park (**P**) should be selected before switching off the engine. If any other gear is selected at switch off, the selector will move to **P** before retracting into the centre console.

If the engine is switched off with Neutral (**N**) selected, the system will wait for 10 minutes before selecting **P**. This procedure allows enough time for the vehicle to be conveyed through a car wash.

Note: This procedure should not be used for vehicle recovery purposes.

MANUAL GEAR SELECTION

Check the status of the **Active in S only** or **Active in D & S** settings for the **Gear Shift Paddles** menu, located in the **Driving Features** menu list. See 47, **INSTRUMENT PANEL MENU**.

When the gear selector is in the **D** position (unless set to **Active in S only** mode), manual gear selection mode may be directly accessed by the single action of operating the steering wheel mounted, gear shift paddles (Sequential shift).

If continued use of the manual gear selection mode (Sequential shift) is required, then the rotary gear selector should be moved to the **S** position.

If the rotary gear selector remains in the **D** position, temporary use of the manual gear selection mode will be held while the driver is accelerating, decelerating, cornering, or continuing to request gear shift changes via the steering wheel paddles.

LIMP-HOME MODE

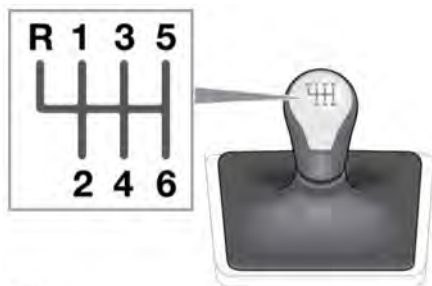
In the event of an electrical or mechanical failure, transmission operation will be limited. **P**, **R**, **N**, **D**, and **S** may still be used to enable the vehicle to be driven to a safe area.

Note: The driver should be aware that the vehicle's performance will be reduced and must take this into account when driving. Also, the use of the steering wheel mounted, gear shift paddles (Sequential shift) will be disabled. In this event, seek qualified assistance as soon as possible.

Some faults will cause the rotary gear selector to be locked in position until the ignition is switched off. If the selected range flashes, it signifies that the driver's request cannot be engaged. In this event, select **N** and then select the required gear change again.

If the transmission is still unable to select the requested gear, contact a Retailer/Authorised Repairer.

MANUAL TRANSMISSION



Never attempt to select reverse gear when the vehicle is travelling forwards. Selecting reverse gear in these circumstances could lead to serious and costly repairs to your vehicle.

Vehicles with a manual transmission have an automated function, which is designed to assist the driver when pulling away from a standing start.

When pulling away, the driver may notice the engine speed increase slightly. If the accelerator pedal is pressed further, the driver may also notice that the engine speed is controlled automatically to an appropriate limit, depending on how far the accelerator pedal is pressed.

In each case, normal engine speed control will be returned fully to the driver, once the manoeuvre has been completed.

Manual transmission vehicles also feature a gear shift indicator warning lamp. The warning lamp will illuminate when it is most appropriate to change gear. See **54, GEAR SHIFT (GREEN)**.