

TOWING WEIGHTS



Vehicles supplied with a 3.0L petrol engine, will not facilitate towing.

See **249, WEIGHTS**, for details of the Gross Vehicle Weight (GVW), axle weights, and the load in the vehicle's luggage compartment.

Note: The trailer's nose weight should also be considered when calculating the GVW.

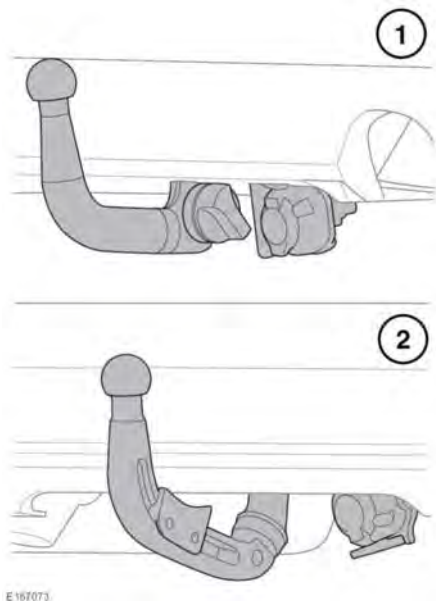
Europe only: When towing, the maximum permissible GVW can be increased by a maximum of 100 kg, provided that the road speed is limited to 100 km/h (62 mph) or less.

Note: When calculating the rear axle loading, remember that the trailer's nose weight, the load in the vehicle's luggage compartment, the weight on a roof rack and the weight of the rear seat passengers must all be added together.

	Engine/transmission Variant	kg
Unbraked trailers	All variants	750
Braked trailer	All variants with automatic transmission	1 800
Braked trailer	2.0L Diesel (163 PS) manual transmission	1 600
Maximum trailer nose weight	All variants	75
Gross Train Weight (GTW)	2.0L Petrol	3 920
	2.0L Diesel (163 PS) manual transmission	3 700
	2.0L Diesel (163 PS) automatic transmission	3 900
	2.0L Diesel (180 PS)	3 935

Note: For every 1 000 metres increase above sea level, the GTW must be reduced by 10%.

TOW BALL OPTIONS



The available Tow ball options for this vehicle are:

1. Quick release, detachable tow ball. See **91, FITTING THE DETACHABLE TOW BALL.**
2. Electrically deployable, powered tow ball. See **92, POWERED TOW BALL.**

Note: The tow ball options are dependent on the market and the vehicle specification.

TRAILER STABILITY ASSIST (TSA)

When a trailer is attached, TSA will automatically detect when trailer sway is developing. It will then gradually reduce the vehicle's speed, by cutting engine power and applying the brakes to help regain control.

- ❗ TSA will not operate in the event of the trailer jack-knifing.

- ❗ The ability of TSA may be reduced when travelling on slippery surfaces.

Note: TSA will not operate when Dynamic Stability Control (DSC) is switched off.

HITCH GUIDANCE

Hitch guidance is a user selectable Touch screen feature that can aid the process of guiding the vehicle to a trailer's tow hitch. Use Hitch guidance while reversing the vehicle to a trailer hitch.

Proceed, as follows:

1. Select reverse gear. Dependent on the vehicle's specification, the Touch screen will automatically display selectable icons or a menu list. See **124, SURROUND CAMERA SYSTEM** or see **117, REAR CAMERA.**
2. Touch the Rear camera system's **Hitch assist** icon, or for Surround camera's, tick **Hitch guidance** on the Touch screen to enable the guidance lines to be displayed.
3. Reverse the vehicle towards the trailer.
4. As the vehicle closes to within 600 mm (2 ft) of the trailer's tow hitch, an automated zoom feature is operated to enlarge the view.
5. Continue the manoeuvre carefully until the vehicle and trailer are as close as required.

TOW ASSIST

Note: Trailer guidance requires a connected trailer to be fitted with a tracking target sticker, which **must** be attached according to specific instructions. Ask a Retailer/Authorised Repairer for details.



E134952

Note: This feature may not operate with all trailer designs.

Trailer guidance aids trailer reversing, by displaying guidance lines on the Touch screen.

Trailer guidance becomes active when a trailer/caravan is attached to the vehicle and the trailer's electrical plug is attached to the vehicle's socket.

Note: The driver's door must be opened and closed after the trailer/caravan is connected to the electrical socket, before the system will detect the connection.

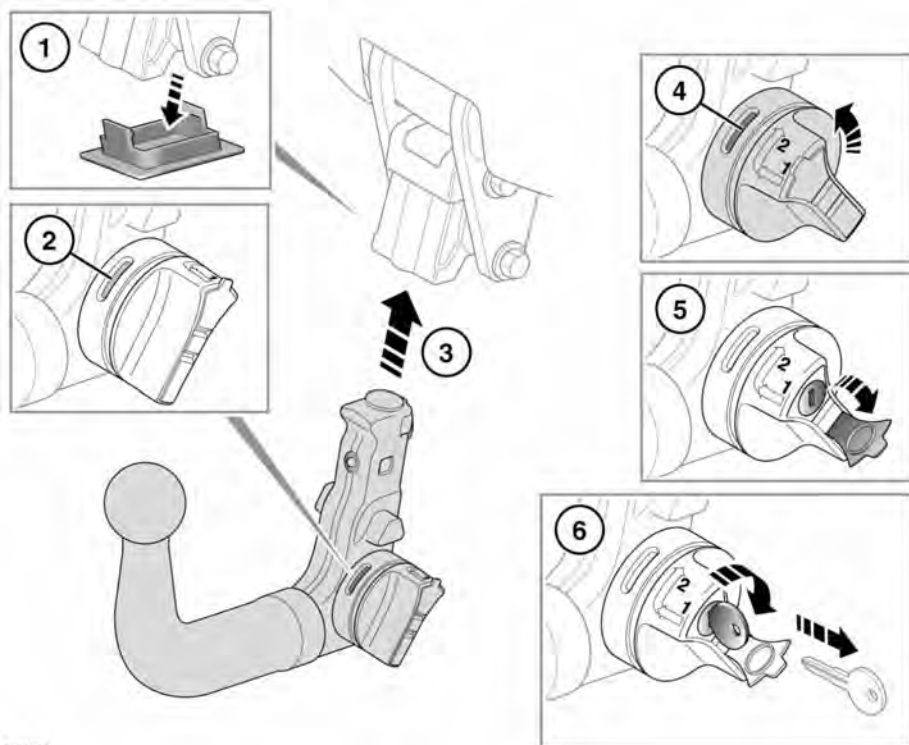
The screen will display a choice for connection. Select **YES** to move to the setup screen. Select **NO** to return to the previous screen.

Note: If the connection is not detected, setup can be manually prompted by touching the Tow assist soft key on the **Camera** menu.

On first use, the setup screens take the user through a series of configuration options for the connected trailer. Information such as trailer hitch length, number of axles and camera preference, is required to finalise setup. Once completed, the details are stored for future use.

When a new or existing trailer configuration is selected, Trailer guidance automatically displays on the Touch screen, when reverse gear is selected. Coloured lines are displayed to indicate the predicted path of both the trailer and the vehicle.

FITTING THE DETACHABLE TOW BALL



E166119

Fit the Detachable tow ball as follows:

1. Remove the protective cover from the vehicle mounting and stow it in the tow ball storage area.
2. The tow ball can only be installed when the locking lever is in the unlocked position (red showing).
3. Insert the tow ball into the tow bar mounting and push firmly upwards until the tow ball locks into position.
4. Turn the locking lever towards you until green is showing.

5. Remove the protective cover from the key slot.
6. Insert the key and turn it clockwise to lock the tow ball, then remove the key and refit the protective cover. Store the key in a safe place.



Do not exceed the maximum nose weight for the detachable tow ball. See 88, TOWING WEIGHTS.

When the detachable tow ball is not required for immediate use, it should be removed from the tow bar and stowed in the appropriate place.

REMOVING THE DETACHABLE TOW BALL

Remove the Detachable tow ball as follows:

1. Insert the key and turn it counter-clockwise to unlock.
2. Remove the key, then supporting the tow ball, press and turn the locking lever away from you to release.
3. Remove the tow ball from the tow bar and stow it in the luggage compartment's stowage area.

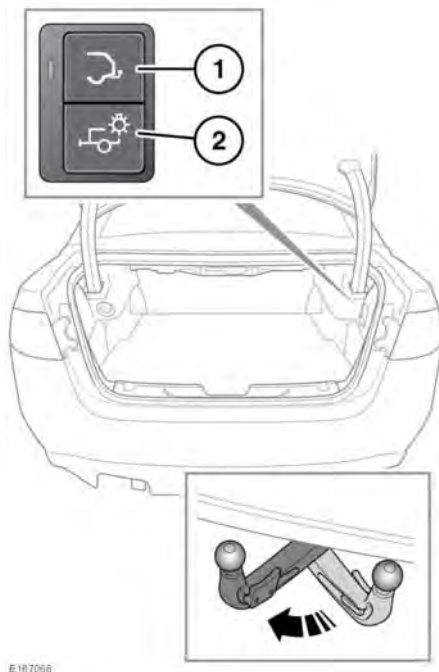
POWERED TOW BALL

Before activating the powered tow ball, make sure that:

- Any trailer is unhitched.
- Any trailer electrical connections are disconnected.
- The vehicle is stationary.
- The luggage compartment lid is open.
- The vehicle's transmission is engaged in Park (P) or neutral.

Failure to comply with the above conditions will prevent the powered tow ball from operating. Also a short warning tone will sound if the powered tow ball button is pressed.

Note: If the powered tow ball does not function correctly, refer to a Retailer/Authorised Repairer.



1. Powered tow ball button: Press and release to deploy the powered tow ball. Press and release again to stow the powered tow ball.
 - The LED indicator lamp, by the side of the button, will flash slowly while the powered tow ball is being deployed or stowed. An audible tone will also sound.
 - Once deployed, the LED indicator lamp will stop flashing and will be solidly lit.
 - Once stowed, the LED indicator lamp will stop flashing and will be solidly lit for 2 seconds and will then extinguish.
 - To stop movement of the powered tow ball, press the tow ball button. To reset the tow ball, press the tow ball button again. During the reset operation, the powered tow ball will fully stow and then fully deploy.

- If, during the operation of the powered tow ball, an obstruction occurs, tow ball movement will stop. The LED indicator lamp will flash faster, accompanied by a 2 second warning tone. When the obstruction has been cleared, press the tow ball button to reset the tow ball.
- If the vehicle is driven with the tow ball neither fully deployed or fully stowed, a warning tone will sound for 10 seconds. Do not tow with the tow ball in this state.
- If the tow ball fails to stow in extreme low temperatures, then press and hold the tow ball button for 10 seconds to initiate the stowing operation.
- In the event of unexpected operation, press the tow ball button to reset the tow ball.



Make sure the powered tow ball is fully deployed before connecting a trailer/caravan.

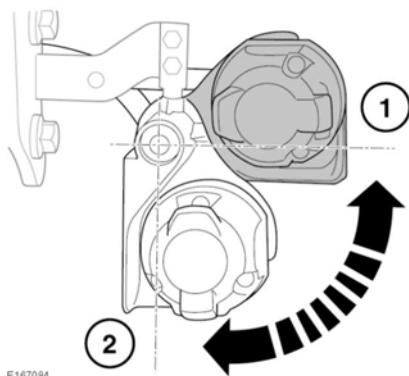
2. Trailer lamp test button: Press to start a 3 minute sequence for both the vehicle and the trailer's lamp testing.
 - For the test to operate, all of the vehicle's lamps should be switched off, the ignition should be switched off, and the Electric Parking Brake (EPB) applied.
 - The vehicle's lamps and all of the trailer's lamps will operate at the same time so that a visual check can be made of all the lamps.
 - The 3 minute sequence can be stopped, at any time, by pressing the trailer lamp test button again, by manually switching on the vehicle's lamps, or by switching on the ignition.

Note: This test feature only allows an observer to check that the lamps are illuminating. The car does not perform any measurements during this test and faulty trailer lamps will not show any errors during this test.

TRAILER ELECTRICAL CONNECTION



Attach only approved electrical connectors, which are in good condition, to the trailer socket.



E167084

The detachable tow ball, trailer socket should be manually deployed (2) and stowed (1), as illustrated.

The electric deployable tow ball, trailer socket will deploy and stow automatically with the tow ball.

When a trailer's electrical connection is made and the vehicle's direction indicators are used, the trailer warning indicator will flash in time with the direction indicators. See **55, TRAILER DIRECTION INDICATORS (GREEN)**.

Towing

In the event that the vehicle's direction indicator is used and the symbol does not flash, the trailer's connection should be checked and appropriate action taken to make sure that the trailer's direction indicators are functioning.

Function	Minimum load	Maximum load amps (Watt)
Brake lamps	0.25 amps (6 Watt)	10 amps (120 Watt)
Direction indicators*	0.25 amps (6 Watt)	5 amps (60 Watt)*
Side markers/rear lamps*	-	5 amps (60 Watt)*
Reverse lamps	-	5 amps (60 Watt)
Fog lamp	-	5 amps (60 Watt)
Permanent battery feed	-	15 amps (180 Watt)
Ignition feed	-	15 amps (180 Watt)

* For each side.

ESSENTIAL TOWING CHECKS



Do not exceed the Gross Vehicle Weight (GVW), maximum rear axle weight, maximum trailer weight, or nose weight. Exceeding any of these limits could cause instability and a loss of control.



Do not loop the breakaway cable or safety chain over the tow ball, as it may slide off.

- To maintain vehicle stability, the trailer's nose load should be set at approximately 7% of the caravan/trailer's gross weight (and a minimum of 4%).

- When towing a trailer with more than one axle, the trailer should be loaded to achieve even weight distribution between axles.
- When calculating the laden weight of the trailer, remember to include the weight of the trailer, plus the weight of the load.
- If the load can be divided between the vehicle and trailer, loading more weight into the vehicle will generally improve stability. Do not exceed the vehicle's weight limits.
- Increase the rear tyre pressures on the towing vehicle to those for maximum vehicle loading conditions.
- Make sure that a suitable breakaway cable, safety chain, or secondary coupling is used. Refer to the trailer manufacturer's instructions for guidance.
- Always connect the breakaway cable or safety chain to the provided connection point. Do not loop it over the tow ball.
- Make sure that the tow ball is secure.
- Check the operation of all the lamps on the trailer.

TOWING A TRAILER



Never exceed the maximum weights for either the vehicle, or the trailer. Doing so can cause accelerated wear and damage to the vehicle. It can also adversely affect vehicle stability and braking, which in turn can lead to a loss of control and an increased braking distance, resulting in a rollover or crash.



To preserve handling and stability, only fit Jaguar approved towing accessories.



Never use towing eyes or lashing points to tow a trailer. They have not been designed for this purpose and doing so may cause them to fail, resulting in injury or death.

Note: A reduction in the performance of the Air conditioning system is a normal function under high load towing conditions.

Note: Engine power output always reduces with increased altitude. At 1000 metres above sea level and for every additional 1000 metres, deduct 10% from the Gross Train Weight (GTW). See **88, TOWING WEIGHTS**.

The Touch screen can display a rear view to assist with the reversing of the vehicle with a trailer attached. See **124, SURROUND CAMERA SYSTEM** and also **90, TOW ASSIST**.

TOW BALL MOUNTED ACCESSORIES



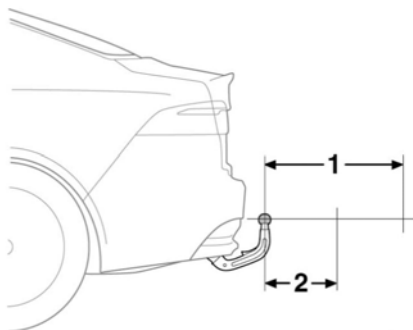
Before fitting a tow ball mounted accessory, make sure it has been approved for use on Jaguar vehicles. The use of unsuitable equipment can result in severe damage to the tow ball and the tow bar.

Before fitting an accessory to the tow ball, observe the following guidelines:

1. The attached accessory must not protrude more than 700 mm from the tow ball.
2. The centre of gravity of the mounted equipment and load combined should not exceed a distance of 390 mm from the tow ball. The maximum weight at this distance must not exceed 82.4 kg.

Note: The forces exerted by the trailer's nose load and tow ball mounted accessories are different in nature and; therefore, a separate limit applies to both.

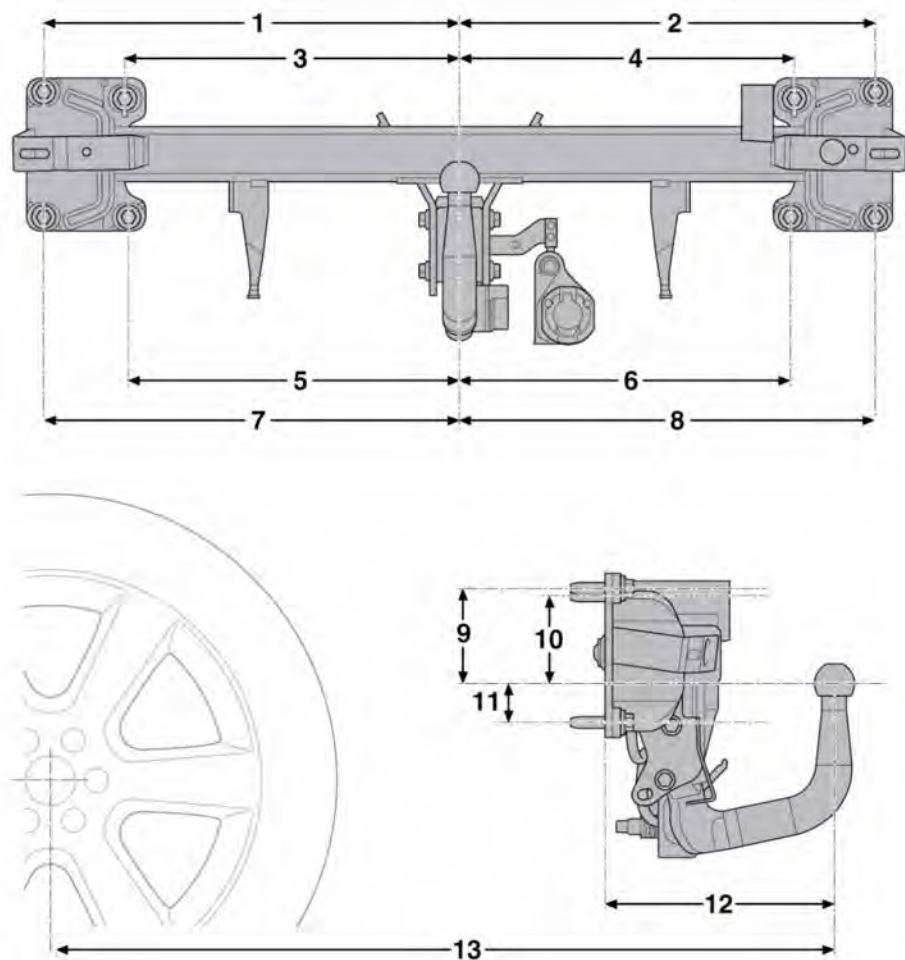
Note: Only use a Jaguar approved bicycle rack, catering for a maximum of up to 2 bicycles.



E167075

TOW BAR DIMENSIONS AND MOUNTING POINTS

Detachable tow bar

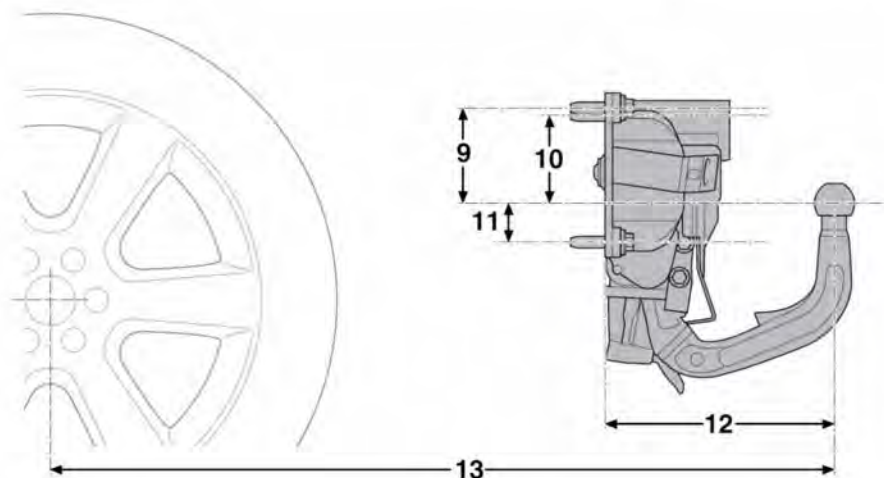
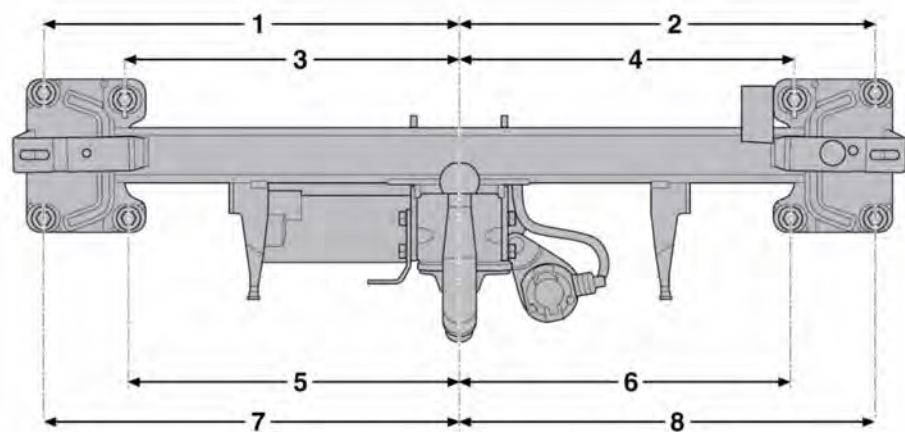


E167040

Dimension	Millimetres
1	534
2	534
3	430
4	430
5	425
6	425
7	534
8	534
9	114
10	106
11	47
12	275
13	1 080

Note: Dimensions refer to towing equipment officially released by Jaguar.

Deployable tow bar



E 167 042

Dimension	Millimetres
1	534
2	534
3	430
4	430
5	425
6	425
7	534
8	534
9	114
10	106
11	47
12	275
13	1 080

Note: Dimensions refer to towing equipment officially released by Jaguar.