

WATER IN FUEL

- !** If the warning **WATER IN FUEL SEE HANDBOOK** is displayed in the Message centre, an excessive amount of water has collected in the fuel filter bowl. Seek assistance from a Retailer/Authorised Repairer, to have the fuel filter bowl drained as soon as possible.

DIESEL ENGINES

Vehicles with diesel engines are equipped with a system to prevent the fuel tank from emptying completely, which would then draw air into the fuel system. When the fuel reaches a minimum level, the system will activate a reduced power mode (i.e., the engine will not run properly). This will be followed by the engine stopping in approximately 1.6 km.

This feature prevents the fuel system from running dry, which could cause damage to the vehicle. If the fuel gauge indicates a low fuel level, or the low fuel warning lamp illuminates (see **53, LOW FUEL WARNING (AMBER)**), then the fuel tank should be refuelled as soon as possible, with at least 4 litres of fuel.

If the system protection function has activated, the vehicle must be refuelled, then restarted using the following procedure:

1. With the brake pedal pressed (for vehicles with an automatic gearbox), or the clutch pedal pressed (for vehicles with a manual gearbox), press and hold the engine stop/start button (see **302, DRIVER CONTROLS**) and crank the engine for 5 seconds.
2. Release the stop/start button.

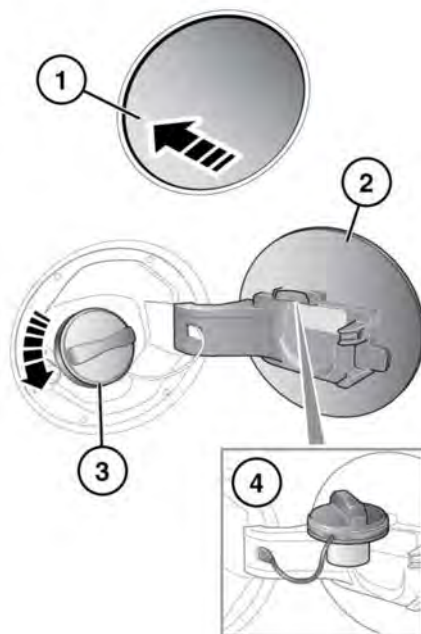
3. With the brake pedal pressed (for vehicles with an automatic gearbox), or the clutch pedal pressed (for vehicles with a manual gearbox), press and release the stop/start button to crank the engine. The engine should start within approximately 5 seconds.

Note: If the engine does not start, pause for 10 seconds with the ignition in Convenience mode, before repeating the procedure from the beginning.

- !** Do not crank the engine for longer than 30 seconds continuously.

FUEL FILLER FLAP

- !** Take note of all the warnings and instructions given on the label affixed to the inside of the fuel filler flap.



E167257