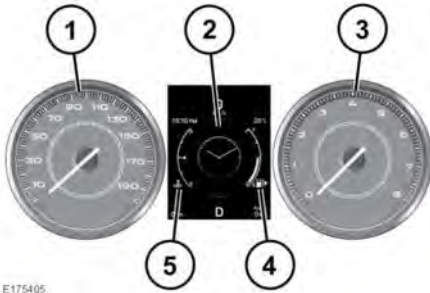


INSTRUMENT PANEL



E175405

1. Speedometer.
2. Message centre and menu.

Note: The display in this area of the Instrument panel can be changed to suit your personal preferences. See **47**, **INSTRUMENT PANEL MENU**.

3. Tachometer.
4. Fuel gauge.

! Never allow the engine to run out of fuel, or damage to the engine may occur. If the amber low fuel warning lamp illuminates, the vehicle should be refuelled as soon as possible. The approximate distance that can be travelled on the remaining fuel can be viewed via the Trip computer range function. As a reminder for the location of the fuel filler, there is an arrow head symbol, next to the fuel pump symbol, pointing to the relevant side of the vehicle.

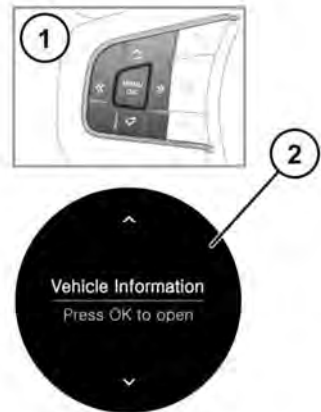
5. Temperature gauge.

! Serious engine damage can occur if the vehicle is driven while the engine is overheating.

If the pointer moves onto the red line, the engine is overheating. Stop the vehicle as soon as safety permits and allow the engine to idle until the temperature reduces. If, after several minutes, the temperature does not reduce, switch off the engine and allow it to cool. If the problem persists, seek qualified assistance immediately.

Note: If engine overheating occurs, there may be a noticeable reduction in engine power and the air conditioning may cease operation. This is a normal operating strategy, to reduce load on the engine and assist with engine cooling.

INSTRUMENT PANEL MENU



E175412

A number of vehicle features and display settings can be configured via the Instrument panel menu.

To display and navigate through the Instrument panel menu, operate the menu control on the steering wheel.

1. Steering wheel menu control: Press **OK** to activate the menu, then use as follows: