

If your vehicle is parked for an extended period, for example, you are on vacation, or away on a business trip, then you can use the **Vehicle Wake Up** feature on the app. This feature will wake up the InControl Remote System on the selected date. Any date within a 30 day period can be chosen. Once **Vehicle Wake Up** is set, the InControl Remote system will enter the low power mode after 60 hours. Battery power is then reserved for the wake up.

Note: The **Vehicle Wake Up** feature cannot be set once the InControl Remote system has shut down.

INCONTROL SECURE

In the event of your vehicle being moved illegally, the Stolen Vehicle Monitoring Centre will immediately alert you and liaise with the police to pinpoint the exact location of your vehicle. Alternatively, use the **Jaguar InControl Remote** app, or the phone number on the InControl website, to contact the Stolen Vehicle Monitoring Centre

InControl Secure uses tracking technology which activates automatically in the event of:

- Attempted tampering with the vehicle.
- The vehicle being moved with the ignition switched off (e.g., towed away).
- The vehicle alarm sounding for more than 30 seconds.
- Attempted GSM (Global System for Mobile communication) jamming
- Disconnecting the GSM antenna.
- Disconnecting the GNSS (Global Navigation Satellite System) antenna.
- Disconnecting the Vehicle Battery.

When the vehicle is being transported, serviced or repaired, **Transport Mode** or **Service Mode** must be enabled. This can be done by using the **Jaguar InControl Remote** app, or via the InControl website. This will prevent automatic theft alerts being raised while the vehicle is being serviced.

Note: When set, **Transport Mode** or **Service Mode** should be updated every 10 hours, or more frequently, if required.

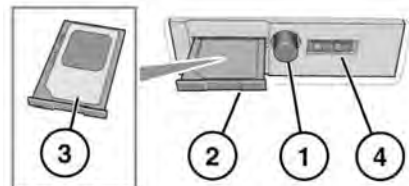
INCONTROL WI-FI

InControl Wi-Fi Hotspot allows in-car connection to the internet using a 3G connection. It utilises the roof mounted antenna, increasing the reliability of continuous 3G connection while on the move. Better data connection strength is achieved, compared to a smartphone in the vehicle, as the metal structure of the vehicle restricts data reception.

Note: This feature requires the **Jaguar InControl Remote** app. See **169, INCONTROL PROTECT**.

A 3G data only SIM card, sometimes called an Internet only SIM or Mobile broadband SIM, must be inserted into the SIM card holder. The SIM card reader utilizes a 'Mini-SIM' interface. If your SIM card is a different size, for example, 'Micro-SIM', an adaptor or replacement SIM card will be required.

Note: If your SIM card has previously been used, and a Personal Identification Number (PIN) has been set, remove the PIN before using the SIM card in the vehicle.



E107512