

# Vehicle recovery

## RECOVERY METHOD

The method for recovery/transportation of the vehicle is on a transporter or trailer designed for that purpose.

- ❗ Make sure that vehicle recovery/transportation is carried out by suitably qualified personnel and the vehicle is secured correctly.
- ❗ The recovery agent must activate the Transmission park release before recovery starts. This procedure is covered in a separate publication for service personnel. Failure to activate the Transmission park release can result in serious transmission damage.
- ❗ During vehicle recovery, the Smart key must remain inside the vehicle and the ignition must be switched on to make sure that the steering column is unlocked.

**Note:** *If the vehicle's battery is to be disconnected, the steering column must be unlocked first. It is not possible to unlock the steering column with the battery disconnected.*

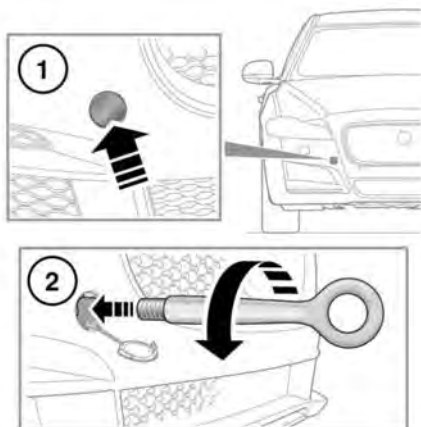
- ❗ This vehicle should not be towed on all 4 wheels and should not be recovered with the front or rear wheels suspended. Doing so can result in serious transmission damage.

## FRONT TOWING EYE

⚠ **The towing eye at the front of the vehicle is designed for on-road recovery only. If it is used for any other purpose, it may result in vehicle damage and serious injury.**

⚠ **Use extreme caution when moving or towing the vehicle. Death or serious injury may occur.**

The towing eye is part of the vehicle's tool kit, located under the luggage compartment floor panel. For vehicles supplied with a spare wheel, see **252, WHEEL CHANGING**. For vehicles supplied with tyre repair kit, see **246, TYRE REPAIR KIT**.



E174005

The front towing point is located behind a small access panel in the front bumper.

To fit the towing eye:

1. Press the lower edge of the front bumper access panel to release the retaining clip and then remove the cover.

**Note:** *Note the orientation of the access cover to aid refitting.*

2. Locate the towing point through the front bumper and fully screw the towing eye counter-clockwise into the towing point, until secure.

**Note:** *Pass the vehicle's wheel brace through the towing eye, to act as a lever to help rotate the towing eye until it is completely tight.*