

1. Rotate the appropriate headlamp cover, approximately 45 degrees counter-clockwise, to release and remove.

**Note:** Note the orientation of the cover to aid refitting.

2. Pull the bulb holder to remove it from the headlamp.

**Note:** Note the orientation of the bulb holder to aid refitting.

3. Pull the bulb to remove it from the bulb holder.

**Note:** Note the orientation of the bulb to aid refitting.

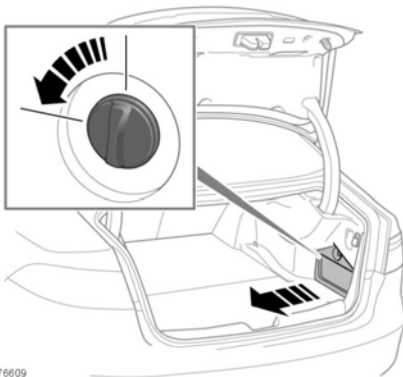
Reverse the removal procedure to install a new bulb.

## REAR LAMP REMOVAL

See **200, CHANGING A BULB.**

Identify the location/s of the bulb/s to be changed and then release/remove the relevant luggage compartment access panel.

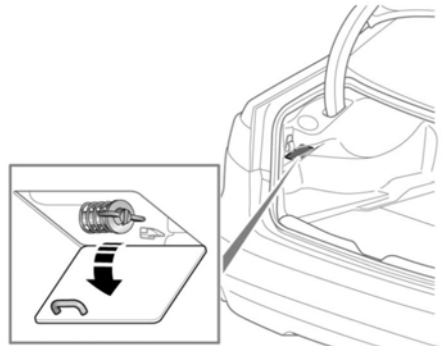
### Right-side access panel



Turn the retaining lug, 90 degrees counter-clockwise, to release, then lower and lift to remove.

Reverse the removal procedure to refit.

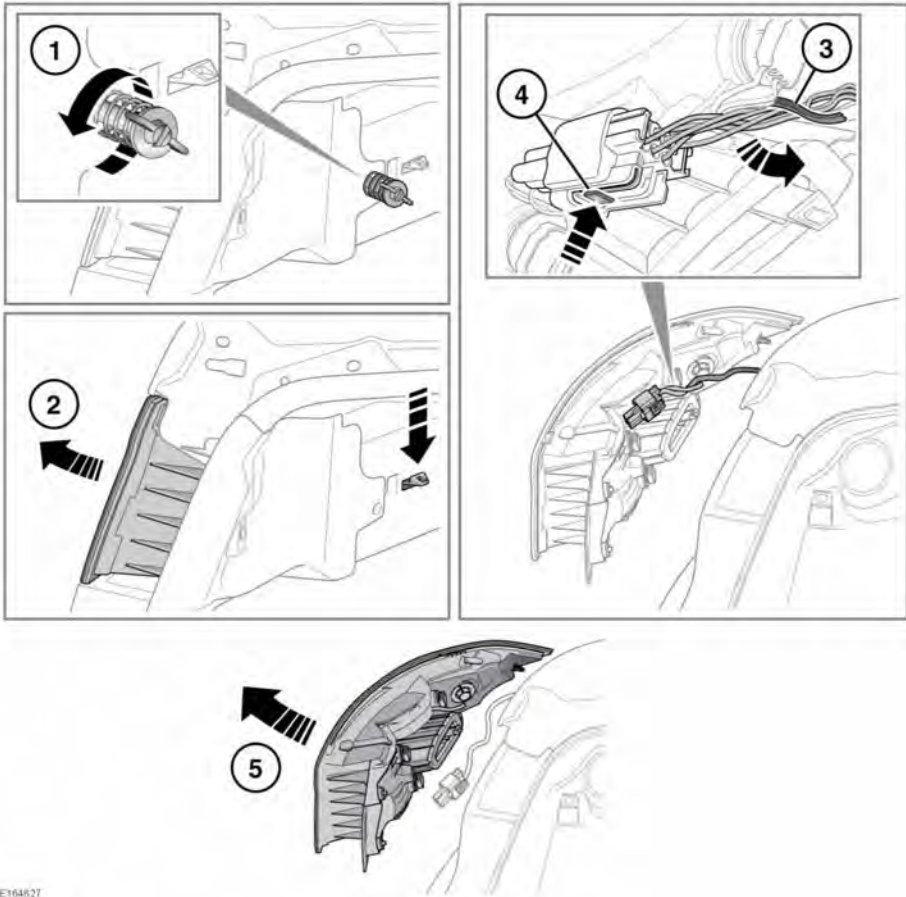
### Left-side access panel



Turn the retaining lug, 90 degrees counter-clockwise, to release and then pull to lower.

Reverse the removal procedure to refit.

## Rear lamp removal



E164627

1. Continually rotate the rear lamp's retaining bolt counter-clockwise, until fully released and then remove.
2. Lightly press down and hold the rear lamp's retaining lug and then carefully move the rear lamp a small distance away from the vehicle. This will now allow access to the rear lamp's electrical connection.

- !** Do not completely remove the rear lamp from the vehicle until the vehicle's wiring loom has been released and disconnected, as this may damage the vehicle's wiring loom and the rear lamp.
3. Release the vehicle's wiring loom from the rear lamp's retaining lug.