


Child safety

- Carefully follow the instructions provided by the manufacturer of the restraint system.
- Adjust the harnesses for every child on every journey.
- Make sure that all slack is removed from the adult seat belt.
- Always attach the top tether when installing an ISOFIX seat.
- Always check the security of the child restraint.
- Do not dress a child in bulky clothing, or place any objects/padding between the child and the restraint.
- Regularly check the fit and condition of child restraints. If the fit is poor, or wear/damage is visible, replace the restraint immediately.
- Set a good example - always wear your seat belt.
- For child seats fitted with a support leg, adjust the leg so that it rests firmly on the floor.
- For some child seats, it may be necessary to remove the head restraint to make sure of a stable fit. Always refit a removed head restraint after the child seat is removed.

 **Child restraint anchorages are designed to withstand only those loads imposed by correctly fitted child restraints. Under no circumstances are they to be used for adult seat belts, harnesses, or for attaching other items or equipment to the vehicle.**

BOOSTER SEATS

In a situation where a child is too large to fit into a child safety seat, but is still too small to safely fit the 3-point belt, a booster seat is recommended for maximum safety. Follow the manufacturer's instructions for fitting and use, then adjust the seat belt to suit.

INSTALLING ISOFIX AND I-SIZE CHILD RESTRAINTS



Do not attempt to fit ISOFIX or i-Size child restraints to the centre rear seating position. The anchor bars are not designed to hold an ISOFIX or i-Size child restraint in this position.

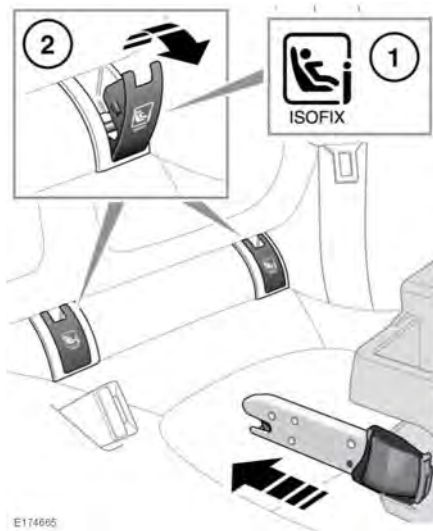


If removing a head restraint in order to fit a child restraint, always secure the head restraint when storing it. Always refit a removed head restraint after the child restraint is removed.



WARNING: child restraint anchorages are designed to withstand only those loads imposed by correctly fitted child restraints. Under no circumstances are they to be used for adult seat belts, harnesses or for attaching other items or equipment to the vehicle.

Both of the outer rear seat positions are equipped to accept ISOFIX and i-Size child restraints.



E174665