

To refit the access panel, align the lug into the recess in the bumper and then lightly press the opposite edge to engage the retaining clip.



**Use extreme caution when detaching towing equipment. Vehicle movement is possible which can result in serious injury.**

## REAR TOWING EYE



**The towing eye at the rear of the vehicle is designed for on-road recovery only. If it is used for any other purpose, it may result in vehicle damage and serious injury.**



**Use extreme caution when moving or towing the vehicle. Death or serious injury may occur.**

The towing eye is part of the vehicle's tool kit, located under the luggage compartment floor panel. For vehicles supplied with a spare wheel, see **252, WHEEL CHANGING**. For vehicles supplied with tyre repair kit, see **246, TYRE REPAIR KIT**.

To fit the towing eye:

1. Press the lower edge of the rear bumper access panel to release the retaining clip and then remove the cover.

**Note:** *Note the orientation of the access cover to aid refitting.*

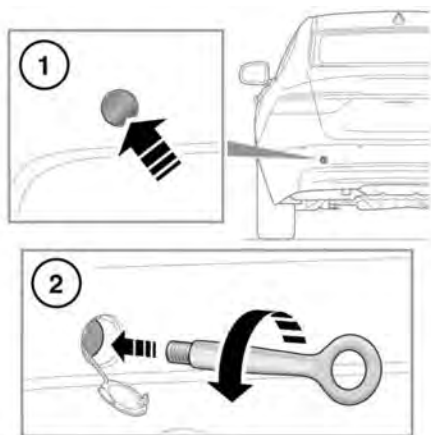
2. Locate the towing point through the rear bumper and fully screw the towing eye counter-clockwise into the towing point, until secure.

**Note:** *Pass the vehicle's wheel brace through the towing eye, to act as a lever to help rotate the towing eye until it is completely tight.*

To refit the access panel, align the lug into the recess in the bumper and then lightly press the opposite edge to engage the retaining clip.



**Use extreme caution when detaching towing equipment. Vehicle movement is possible which can result in serious injury.**



E174009

The front towing point is located behind a small access panel in the front bumper.