

# Entering the vehicle

**Note:** If the Smart key is inadvertently left inside the luggage compartment and the vehicle is locked and the alarm set, an audible warning sounds to indicate a mislock and the luggage compartment lid re-opens after approximately three seconds.

**Note:** Make sure the luggage compartment is fully closed before leaving the vehicle unattended. Visible and audible warnings indicate if the vehicle is locked and the alarm armed. If there are no visible or audible warnings upon closing the luggage compartment, the vehicle may be unprotected.

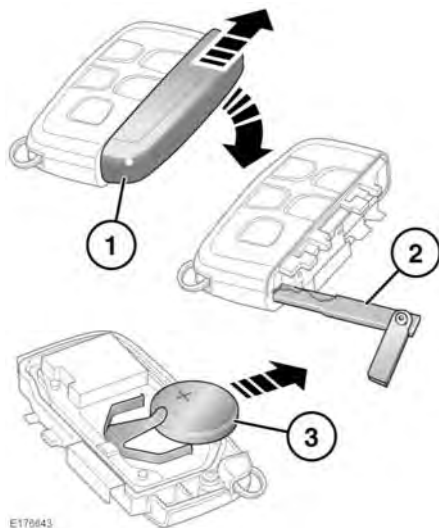
## DRIVE-AWAY LOCKING

Drive-away locking automatically locks all of the doors when the vehicle reaches a set speed. This feature can be enabled/disabled via **Drive-away locking** in the **Vehicle Settings** menu. See **47, INSTRUMENT PANEL MENU**.

**Note:** Pressing the unlock or lock button on the driver or front passenger door after Drive-away locking has taken place, overrides Drive-away locking for the current journey. See **18, DOOR LOCKS AND RELEASE LEVERS**.

## SMART KEY BATTERY REPLACEMENT

When the battery needs replacing, there will be a significant decrease in the effective range and **SMART KEY BATTERY LOW** will be displayed in the Message centre.



To replace the battery:

1. Remove the cover by sliding in the directions of the arrows.
2. Use the emergency key blade to separate the Smart key body.
3. Fit a new and unused CR2032 type battery (available from a Retailer/Authorised Repairer) with the positive (+) side upwards.

**Note:** Avoid touching the new battery. Moisture/oil from fingers can reduce battery life and corrode the contacts.

**Note:** If the low battery warning does not extinguish, this indicates that the replacement battery is not in a new and unused condition.

Refit the parts in reverse order, making sure that they click securely into place.