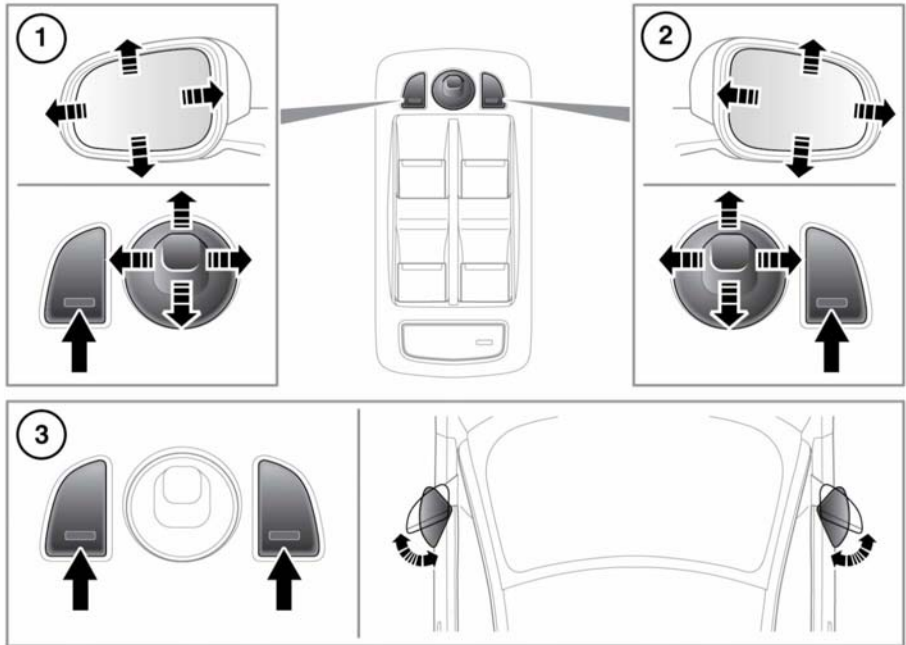


## EXTERIOR MIRRORS



E166364

1. Left mirror adjustment.
2. Right mirror adjustment.
3. Power-fold/unfold: Press both buttons simultaneously. This feature is inhibited at speeds over 110 km/h (70 mph).

The mirrors can be adjusted and folded when the ignition is on and for up to 5 minutes after the ignition is switched off, provided the driver's door is not opened.

Press the appropriate button to select the mirror to be adjusted; the button LED indicator lamp will illuminate to confirm which side is active. Use the joystick control to adjust the mirror's glass.

**Note:** Depending on the type of lens used, distances may be difficult to judge accurately when only using the mirrors.



The mirrors can be configured to automatically fold when the vehicle is locked and unfold when unlocked. This feature can be enabled/disabled by a Dealer/Authorised Repairer.

If the mirrors are accidentally knocked out of position (e.g., so only one is folded), press both buttons simultaneously to re-synchronise.

**Note:** If the mirrors were folded using the switches, they will not unfold when the vehicle is unlocked.