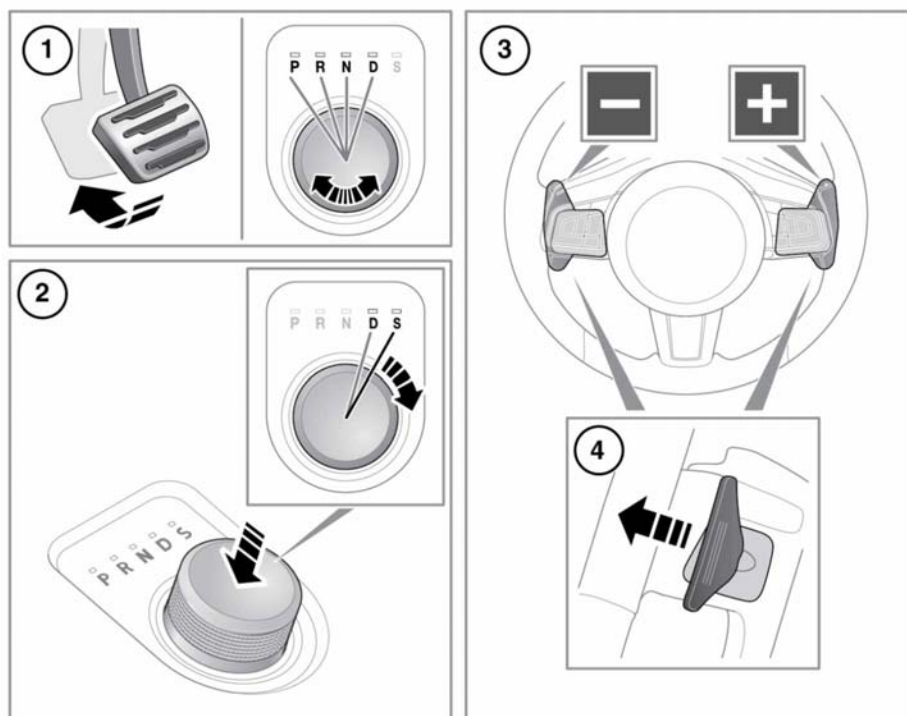


AUTOMATIC TRANSMISSION



E166313

The rotary gear selector rotates in either direction. At engine start-up, the rotary gear selector elevates up from its lowered, stowed position.

The gear selection status of the rotary gear selector and the steering wheel's gear selector paddles (Sequential shift), will be displayed in the Message centre.

1. To select Drive (**D**), Neutral (**N**), Reverse (**R**) or Park (**P**), press the brake pedal and rotate the gear selector. The relative LED indicator lamp, by the gear selector, will illuminate.

While in **D**, the gear changing is fully automatic. The gear change shift points are determined by the accelerator pedal position and the vehicle's current speed.

To achieve rapid acceleration (kick-down) while in **D**, quickly press the accelerator pedal to its full travel. When the accelerator pedal is relaxed, normal automatic gear changing will resume.

Note: Before selecting **D**, **R**, **N** or **P**, make sure the vehicle is stationary and the brakes are applied.