

# Fuel and refuelling


**Note:** When the system protection function is activated, it will inhibit the operation the Intelligent stop/start feature and a diesel particulate regeneration.

If the fuel gauge indicates low fuel or the warning indicator illuminates, the fuel tank should be refuelled as soon as possible, with at least 4 litres (0.9 gallons) of fuel.

If the system protection function has activated, the vehicle must be refuelled, and then restarted using the following procedure:

1. With the brake pedal pressed (for vehicles with an automatic transmission), or the clutch pedal pressed (for vehicles with a manual transmission), press and hold the engine **START/STOP** button and crank the engine for 5 seconds.
2. Release the **START/STOP** button.
3. With the brake pedal pressed (for vehicles with an automatic transmission), or the clutch pedal pressed (for vehicles with a manual transmission), press and release the **START/STOP** button to crank the engine. The engine should start within approximately 5 seconds.

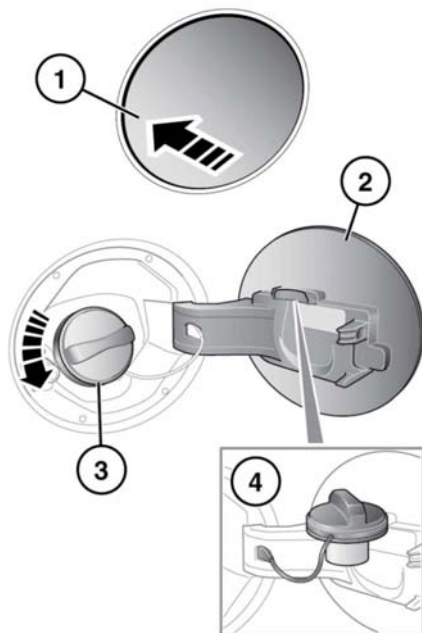
**Note:** If the engine does not start, pause for 10 seconds with the ignition in Convenience mode, before repeating the procedure from the beginning.

-  Do not crank the engine for longer than 30 seconds continuously.

## FUEL FILLER FLAP



Take note of all the warnings and instructions given on the label affixed to the inside of the filler flap.



E167357

The vehicle must be unlocked using the Smart key, before the filler flap can be opened.

1. Press and release the rear of the flap (in the area indicated) to unlatch.
2. Pull the flap open. The label on the inside of the flap indicates the correct fuel for the vehicle.
3. Twist the cap counter-clockwise to undo.
4. Stow the cap on the lip provided on the top of the hinge arm, as shown.