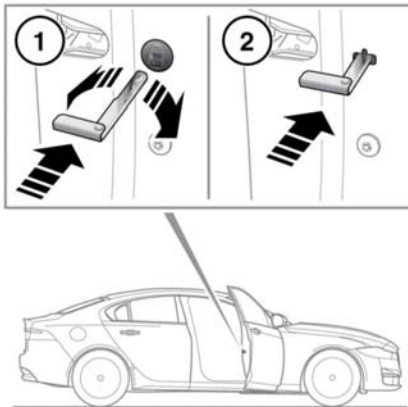


EMERGENCY LOCKING



E166027

In the event of the battery discharging, or a fault with the Keyless locking system, each of the doors must be locked manually.

The emergency key blade is required for this procedure. See **6, UNLOCKING THE VEHICLE**.

Note: Do not leave the emergency key blade in the vehicle at any point during the emergency locking procedure.

1. Open a door and locate the emergency lock access cover. Using the emergency key blade, rotate the cover counter-clockwise to release and then pull to remove it from the door.
2. Insert the emergency key blade firmly into the emergency lock.
The emergency key blade can now be removed.
3. Refit the emergency lock access cover and rotate it clockwise to secure it firmly.
4. Close the door and check that it is locked.
Repeat the procedure for all other unlocked doors.