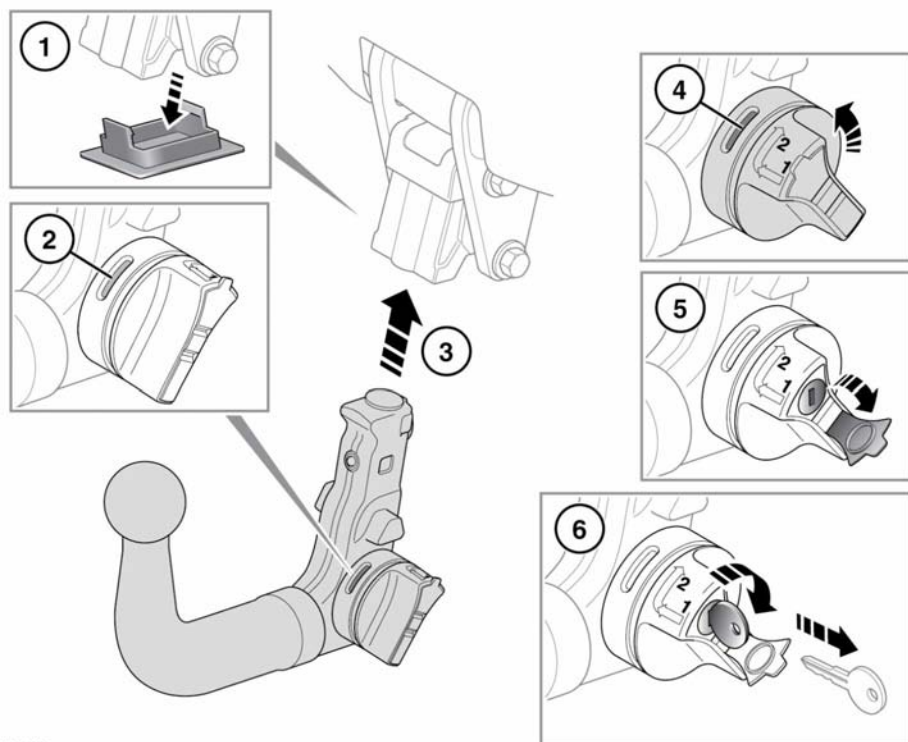


FITTING THE DETACHABLE TOW BALL



E166119

Fit the Detachable tow ball as follows:

1. Remove the protective cover from the vehicle mounting and stow it in the tow ball storage area.
2. The tow ball can only be installed when the locking lever is in the unlocked position (red showing).
3. Insert the tow ball into the tow bar mounting and push firmly upwards until the tow ball locks into position.
4. Turn the locking lever towards you until green is showing.

5. Remove the protective cover from the key slot.
6. Insert the key and turn it clockwise to lock the tow ball, then remove the key and refit the protective cover. Store the key in a safe place.



Do not exceed the maximum nose weight for the detachable tow ball. See 88, TOWING WEIGHTS.

When the detachable tow ball is not required for immediate use, it should be removed from the tow bar and stowed in the appropriate place.