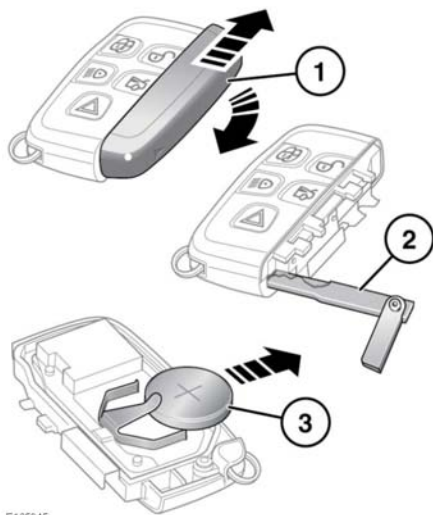


# Entering the vehicle

## SMART KEY BATTERY REPLACEMENT

When the battery needs replacing, there will be a significant decrease in the effective range of the Smart key and the message **SMART KEY BATTERY LOW** will be displayed in the Message centre.



E165945

### To replace the battery:

1. Slide the cover to release and then pull to remove.
2. Use the emergency key blade to separate the Smart key's body.
3. Fit a new **CR2032** type battery (available from a Dealer/Authorised Repairer), with the positive (+) side upwards.

**Note:** Only handle the outer edge of a new battery. Avoid touching the top and bottom faces of a new battery, as skin moisture/oil can reduce battery life and corrode the contacts. If skin contact is made, then clean with a lint-free cloth.

**Note:** If the low battery warning does not extinguish, this indicates that the replacement battery is not in a new and unused condition.

Refit the parts in the reverse order, making sure that they click securely into place.



**Battery disposal:** Used batteries must be disposed of correctly, as they contain harmful substances. Seek advice on disposal from a Dealer/Authorised Repairer and/or a local authority.

## SMART KEY CARE



**To prevent accidental operation, which may result in an injury, never leave the Smart key in the vehicle if children or animals are also left in the vehicle.**



Do not expose to extremes of heat, dust, or humidity, or allow contact with fluids. Do not leave the transmitter exposed to direct sunlight.

The emergency key blade number is recorded on an attached label, which should be peeled off and affixed to the correct area in the vehicle's service book, supplied in the owner's literature pack. Keep the service book safe, but not in the vehicle.

The operational range of the Smart key will vary considerably, depending on atmospheric conditions and interference from other transmitting devices.

**Note:** The Radio Frequency (RF) used by the Smart key may be used by other devices; e.g., medical equipment. This may prevent the Smart key from operating correctly.