

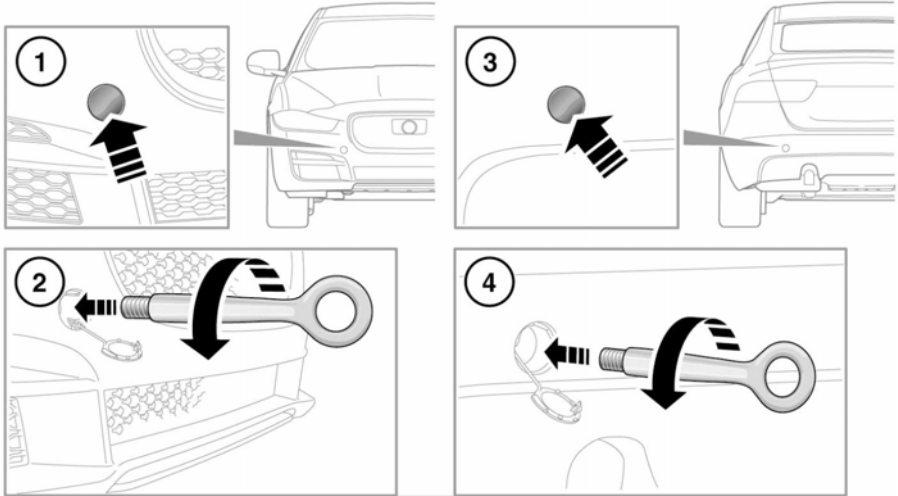
TOWING POINTS



The towing eyes at the front and rear of the vehicle are designed for on-road recovery only. If they are used for any other purpose, it may result in vehicle damage and serious injury.



Use extreme caution when moving or towing the vehicle. Death or serious injury may occur.



E167521

The towing eye is part of the vehicle's tool kit, located under the luggage compartment floor panel. For vehicles supplied with a spare wheel, see **236, WHEEL CHANGING**. For vehicles supplied with tyre repair kit, see **231, TYRE REPAIR KIT**.

The front and rear towing points are fixed and located behind a small access panel in the relevant bumper.

1. Press the lower edge of the front bumper access panel to release the retaining clip and then remove the cover.
2. Locate the towing point through the front bumper and fully screw the towing eye counter-clockwise into the towing point, until secure.

3. Press the lower edge of the rear bumper access panel to release the retaining clip and then remove the cover.
4. Locate the towing point through the rear bumper and fully screw the towing eye counter-clockwise into the towing point.

Note: Pass the vehicle's wheel brace through the towing eye, to act as a lever to help rotate the towing eye until it is completely tight.

Note: Note the orientation of the access cover to aid refitting.

To refit the access panel, align the lug into the recess in the bumper and then lightly press the opposite edge to engage the retaining clip.

Vehicle recovery



Use extreme caution when detaching towing equipment. Vehicle movement is possible, which can result in serious injury.