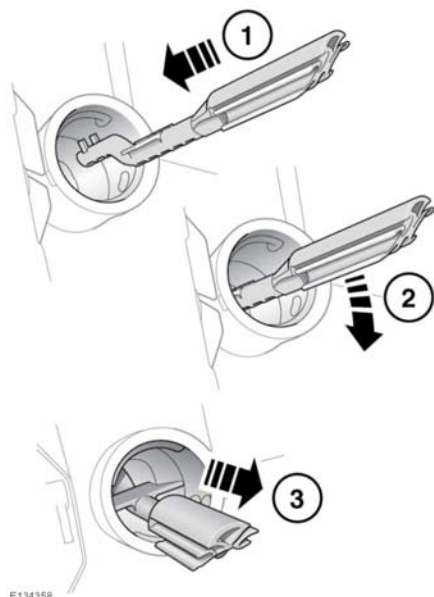


Fuel and refuelling



E134358

The reset tool is stored in the vehicle's tool kit, located under the luggage compartment floor panel. Vehicles supplied with a spare wheel, see **236, WHEEL CHANGING**. Vehicles supplied with a tyre repair kit, see **231, TYRE REPAIR KIT**.

To reset the misfuelling protection device:

1. Insert the reset tool with the teeth uppermost, as far as it will go into the filler neck.
2. Locate the teeth, by pushing down on the top of the reset tool.
3. With the top of the tool pressed down and the teeth engaged, slowly pull the tool out of the filler neck to reset the device.

⚠ Do not twist the device, once the teeth have engaged.

Note: When reset, the yellow part of the misfuelling protection device should no longer be visible in the filler neck.

Replace the reset tool back into the vehicle's tool kit.

FUEL TANK CAPACITY

Avoid the risk of running out of fuel and never intentionally drive the vehicle when the fuel gauge indicates that the fuel tank is empty. When refuelling the vehicle after the fuel gauge reads empty, it may not be possible to add the maximum fuel quantity, as there will be a small reserve remaining in the fuel tank. See **253, CAPACITIES**.