

Object detection while opening: If an object is detected that would interfere with the tailgate opening, tailgate movement will stop. Remove any obstructions and press a tailgate release button again to open.

Object detection while closing: If an object is detected that would interfere with the tailgate closing, tailgate movement will stop and then reverse to the fully open position. An audible warning will be given to indicate a mislock. Remove any obstructions and press a tailgate release button again to close.

REMOTE KEY FOB CARE

⚠ WARNING

To prevent unauthorized operation, never leave the Smart key unattended in the vehicle.

Do not expose to extremes of heat, dust, humidity, or allow contact with fluids. Do not leave the transmitter exposed to direct sunlight.

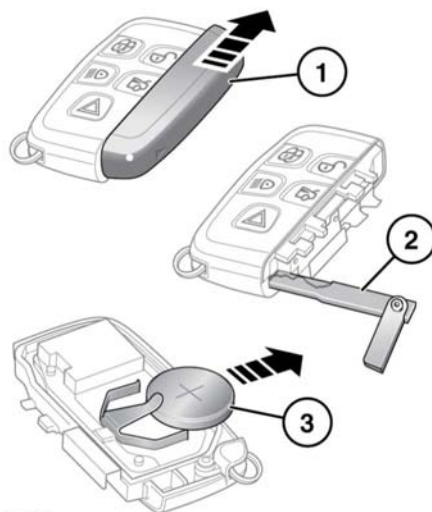
The emergency key blade number is recorded on an attached label. Peel off the label and keep it in a safe place, but not in the vehicle.

The operational range of the Smart key will vary considerably depending on atmospheric conditions and interference from other transmitting devices.

Note: *The Radio Frequency (RF) used by the Smart key may be used by other devices (e.g., medical equipment). This may prevent the Smart key from operating correctly.*

REMOTE KEY FOB BATTERY REPLACEMENT

When the battery needs replacing, there will be a significant decrease in the effective range and the message **SMART KEY BATTERY LOW** is displayed in the Message center.



E151480

To replace the battery:

1. Slide the cover in the direction of the arrow until a click is heard. Remove the cover.
2. Use the emergency key blade to separate the Smart key body.
3. Fit a new CR2032 type battery (available from a Dealer/Authorized Repairer), with the positive (+) side upwards.

Note: *Handle a new battery with the outer edge. Avoid touching the top and bottom faces of the new battery, as moisture/oil from your fingers can reduce battery life and corrode the contacts. If skin contact is made, clean with a lint-free cloth.*

Entering the vehicle

Refit the parts in the reverse order, making sure that they click securely into place.



Battery disposal: Used batteries must be disposed of correctly, as they contain harmful substances. Seek advice on disposal from a Dealer/Authorized Repairer and/or a local authority.