

## TOWING EYES

### **⚠ WARNING**

The towing eye at the front is designed for on-road recovery only. If it is used for any other purpose, it may result in vehicle damage and cause serious injury or death.

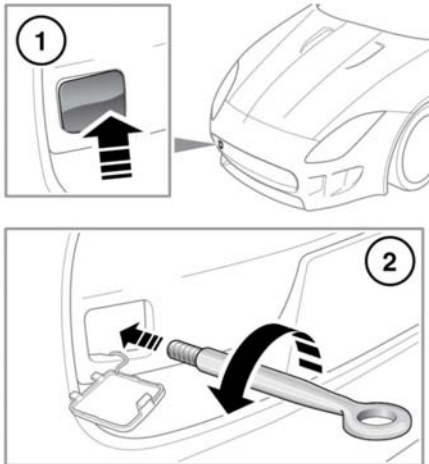
### **NOTICE**

*Only tow the vehicle in a forward direction with all four wheels on the ground. Towing in a reverse direction or with only two wheels on the ground, will cause serious damage to the transmission.*

### **NOTICE**

*Do not tow the vehicle for more than 30 miles (50 km). Do not exceed 30 mph (50 km/h). Towing for a greater distance or at a higher speed may result in serious damage to the transmission.*

## ATTACHING THE FRONT TOWING EYE



E150044

The front towing eye is located in the Luggage compartment, along the right side of the vehicle's battery. To access the front towing eye, remove the Luggage compartment left-side (battery) cover.

1. Pop out the cover in the front bumper.
2. Locate the towing eye through the bumper and screw the towing eye counter-clockwise into its fixing, until secure.

## TRANSPORTING THE VEHICLE

### **⚠ WARNING**

Use extreme caution when moving or towing the vehicle. Death or serious injury may occur.

### **NOTICE**

*Only use the lashing points or over-tire tie-downs. Lashing over the body or suspension is not permissible, as settling of the suspension will cause the lashing straps to slacken.*

The recommended method for recovery/transportation of the vehicle, is on a transporter or trailer designed for that purpose. Make sure that transportation is carried out by suitably qualified persons, and that the vehicle is secured correctly.

To allow the vehicle to roll freely, the transmission will need to be released from Park (P) via the use of the Emergency park release.

### **NOTICE**

*If possible, make sure that the Deployable Rear Spoiler (DRS) is in the fully stowed position.*