

Exiting the vehicle

When attempting to lock the vehicle with the Smart key, the vehicle will not lock and 2 warning tones will sound under any of the following conditions:

- One or both of the doors are not fully closed.
- The hood is not fully closed.
- The tailgate or Luggage compartment is not fully closed.
- The ignition is ON.

Check that all of the above are fully closed and the ignition is OFF, and lock the vehicle again.

PERIMETER ALARM

The alarm system is activated when the vehicle is locked.

Once activated, the alarm system will sound if:

- The hood, tailgate or Luggage compartment, or any door is opened.
- The engine **START/STOP** button is pressed without a valid Smart key present.

DEACTIVATING THE ALARM WHEN TRIGGERED

If the alarm has been triggered, it can be deactivated by any one of the following methods:

- Press the unlock button on the Smart key.
- Open a door using Passive entry.
- Press the **START/STOP** button with a valid Smart key present.

AUTOMATIC RELOCKING AND RE-ARMING OF THE ALARM

Automatic relock and re-arm is a feature which, if enabled, automatically relocks the vehicle and arms the Anti-theft system.

If the vehicle is in a locked and armed state and the remote unlock button is pressed but none of the doors or the Luggage compartment are opened within 40 seconds, the vehicle will automatically relock both of the doors and the Luggage compartment, and will re-arm the alarm system.

Note: *Automatic relocking and re-arming will only Single lock the vehicle and set the alarm to the last armed state.*

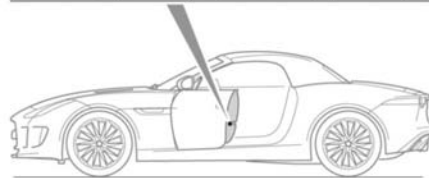
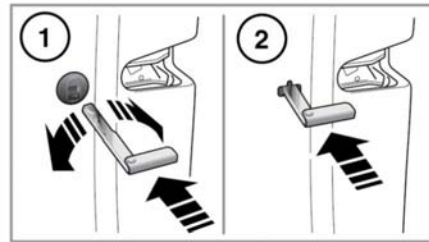


Automatic relocking and re-arming can be enabled/disabled by your Dealer/Authorized Repairer.

SENSOR FAULTS

If the security systems detect a fault with one of the security sensors, an error tone will sound from the alarm after the vehicle is unlocked and disarmed. If this condition occurs, seek assistance from a Dealer/Authorized Repairer for rectification.

EMERGENCY LOCKING



E 148384

In the event of the battery discharging or a fault with the Passive locking system, the doors must be locked manually.

Note: *Do not leave the emergency key blade in the vehicle at any point during the emergency locking procedure.*

1. Open the door and locate the emergency lock access cover. Using the emergency key blade, see **7, UNLOCKING THE VEHICLE**, rotate the cover to release it from the door. Remove the cover and store it safely.
2. Insert the emergency key blade firmly into the emergency lock.
The emergency key blade can now be removed.
3. Refit the emergency lock access cover and rotate it clockwise to secure it firmly.
4. Close the door and check to make sure that the door is locked.
Repeat the procedure for the other unlocked door.