

CHILD SEAT POSITIONING

WARNING

Seat belts (or suitable child restraints) should be used by all vehicle occupants, for every trip, no matter how short. Failure to do so will greatly increase the risk of death or serious injury in the event of an accident.

WARNING

Even with advanced air bags, children can be killed or seriously injured. Never place a child in any type of restraint or booster seat in the front passenger seat.

When using a seat belt to secure a (non-LATCH) forward-facing type of child seat, make sure the Seat belt locking mechanism is used. See **25, SEAT BELT LOCKING MECHANISM**. Also see **30, CHILD RESTRAINT CHECK LIST**.

PROPER CHILD SAFETY SEAT USE CHART

PROPER CHILD SAFETY SEAT USE CHART			
Buckle everyone.			
	INFANTS	TODDLER	YOUNG CHILDREN
WEIGHT/AGE	Birth to 1 year old and up to at least 20 to 22 lb (9 to 10 kg).	Over 1 year and over 20 to 40 lb (9 to 18 kg).	Ages 4 to 8, unless 4 ft 9 in (145 cm). Over 40 lb (18 kg).
TYPE of SEAT	Extreme hazard! Never place a rearward facing child restraint on the front passenger seat. The infant could be seriously injured or killed if the air bag deploys.	Convertible seat or Forward-facing toddler seat.	Belt positioning booster seat.
SEAT POSITION		Forward-facing.	Forward-facing.
ALWAYS MAKE SURE		Harness straps should be at or above shoulder level. Most seats require top slot for forward-facing.	Belt positioning booster seats must be used with both the lap and shoulder belt. Make sure the lap belt fits low and tight across the lap and upper thigh area and the shoulder belt fits snug crossing the chest and shoulder to avoid abdominal injuries.

INSTALLING TETHER ANCHORAGE CHILD RESTRAINTS

Coupe only

⚠ WARNING

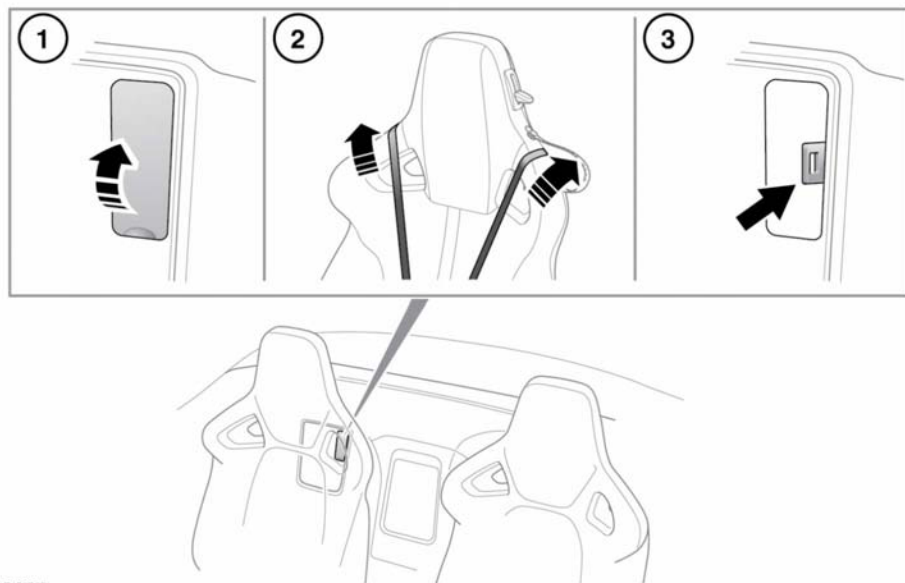
Child restraint anchorages are designed to withstand only those loads imposed by correctly fitted child restraints. Under no circumstances are they to be used for adult seat belts, harnesses or for attaching other items or equipment to the vehicle. Doing so can greatly increase the risk of serious injury or death in the event of an accident.

⚠ WARNING

Always follow the child seat or restraint system manufacturer's instructions when fitting tether straps. Failure to do so can greatly reduce the effectiveness of the child seat or restraint system in the event of an accident.

Note: Convertible vehicles are not equipped with a tether anchorage point; and are therefore not suitable for use with a child seat, or restraint system, that requires a tether.

Coupe vehicles are equipped with a tether anchorage point behind the passenger seat. This should be used to attach tether straps from the child seat or restraint system.



E159765

Note: The passenger seat must be fully rearward and the seatback fully upright to allow access to the tether anchorage point and correct adjustment of the tether straps.

1. Remove the cover (1) to access the tether anchorage point (3).