

# Wheel changing

## **⚠️WARNING**

Always use the complete jacking lever assembly throughout the tire changing process, to minimize any chance of accidental injury.

Always position the jack from the side of the vehicle, in line with the appropriate jacking point.

Never place anything between the jack and the ground, or between the jack and the vehicle.

Only jack the vehicle using the approved jacking points. Do not attempt to raise the vehicle unless the jack head is fully engaged in the jacking point.

## **⚠️WARNING**

**THAT NO PERSON SHOULD PLACE ANY PORTION OF THEIR BODY UNDER A VEHICLE THAT IS SUPPORTED BY A JACK.**

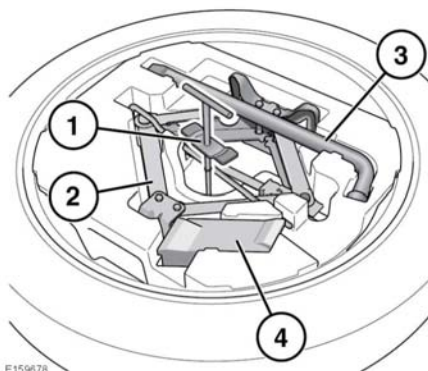
## **⚠️WARNING**

Take care when loosening the wheel nuts. The wheel brace may slip off if not properly attached and the wheel nuts may give way suddenly. Either unexpected movement may cause an injury.

## **⚠️WARNING**

Do not start or run the engine while the vehicle is supported only by a jack.

## WHEEL CHANGING



## **NOTICE**

*Carbon ceramic brake rotors are susceptible to damage. Take care not to damage the brake rotors when removing and refitting the road wheels.*

## **NOTICE**

*Vehicles with carbon ceramic brake rotors are supplied with 2 wheel guide pins. The pins are stored with the compressor in the tire repair kit, see **204, TIRE REPAIR KIT**. Make sure that the 2 wheel guide pins are used to aid removing and refitting of road wheels on vehicles with carbon ceramic brake rotors.*

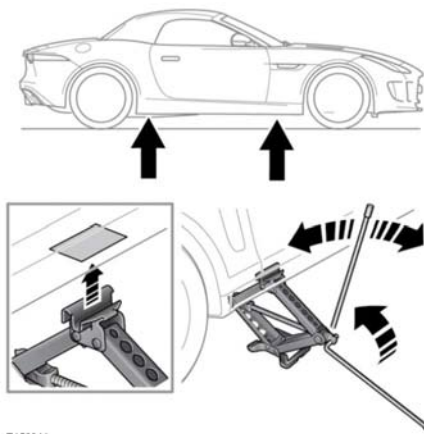
**Note:** *Vehicles with a convertible roof do not facilitate stowage of a full size wheel and tire.*

Open the Luggage compartment lid, see **10, OPENING AND CLOSING THE LUGGAGE COMPARTMENT**.

1. Spare wheel retaining bolt and clamp.
2. Jack: Observe the instructions printed on the jack.
3. Wheel brace.
4. Wheel chock.

To remove the spare wheel and tool tray, unscrew and remove the retaining bolt and clamp (1).

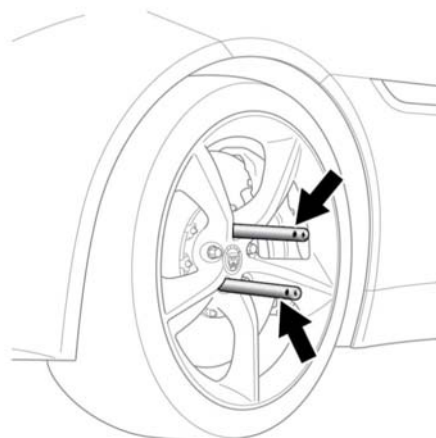
Before raising the vehicle, use the wheel nut brace to slacken the wheel nuts half a turn counter-clockwise.



E150041

There are 4 jacking points on the underside of the floor. Two indented, triangular indicators are provided on each sill cover. These indicate the location for the jack.

Raise the vehicle with the jack until the tire being lifted just clears the ground. Operate the jack with a slow and steady motion. Avoid sudden and erratic actions as they may cause the vehicle/jack to become unstable.



E159329

On vehicles with carbon ceramic brake rotors, remove 2 opposing wheel nuts and install the 2 wheel guide pins, as shown.

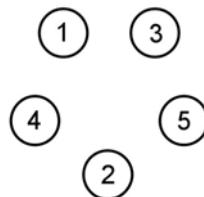
Remove the remaining wheel nuts and carefully remove the road wheel.

**Note:** To remove the center badge, use the plastic tipped end of the wheel nut wrench handle, push the center badge from its housing from the inside of the wheel.

## NOTICE

Do not remove the 2 wheel guide pins from the vehicle until the wheel has been lightly tightened with 3 wheel nuts.

Using the wheel nut wrench, lightly tighten the wheel nuts alternately, using the sequence shown in the illustration.



E132675