

# Entering the vehicle

The Smart key needs only to be on the driver's person; it does not need to be exposed or handled. However, the Smart key may not be detected if it is placed within a metal container, or is shielded by a device with a back-lit LCD screen such as a smart phone, laptop (including in a laptop bag), game console, etc. Keep the Smart key clear of such devices when attempting Passive entry or Keyless starting.

**Note:** *Passive entry will unlock the vehicle in accordance with the current security setting (Single-point or Multi-point entry). However, if Single-point entry is the current setting and a door other than the driver's door is opened first, both of the doors will unlock.*

When all open doors have been closed, the system will search the vehicle's interior for a valid Smart key. If one is not detected, **SMART KEY NOT FOUND REFER TO HANDBOOK** will be displayed in the Message center. See **82, KEYLESS START BACKUP**.

## GLOBAL OPENING

Press and hold the unlock button for 3 seconds. The vehicle will unlock and the alarm will be disarmed immediately. After 3 seconds, both of the windows will open. This feature can be enabled/disabled via the **Vehicle Settings** menu. See **42, INSTRUMENT PANEL MENU**.

To stop the windows from opening during the Global opening operation, press any of the buttons on the Smart key or operate the driver's window switch. To stop a particular window from opening, operate the relevant window switch.

## DRIVE-AWAY LOCKING

Locks both doors and retracts all deployed door handles, when the vehicle exceeds a predetermined limit, set via the **Vehicle Settings** menu from the Instrument panel menu list. See **42, INSTRUMENT PANEL MENU**.

**Note:** *Drive-away locking can be enabled/disabled via the Vehicle set-up menu from the Instrument panel menu list. If disabled, the deployed handles will retract when the vehicle reaches a speed of 5 mph (8 km/h).*

Use of the central locking/unlocking buttons will override the Drive-away locking feature for the rest of a trip. See **242, DRIVER CONTROLS**.

If a door is individually unlocked and opened, both of the doors will relock when the open door is closed.

## OPENING AND CLOSING THE LUGGAGE COMPARTMENT

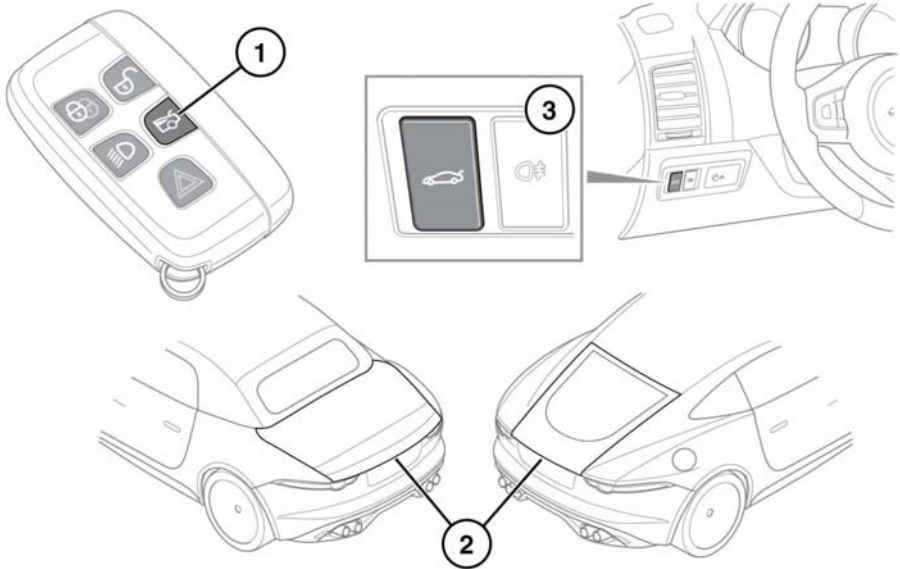
### NOTICE

*The Smart key may not be detected if it is placed within a metal container, or if it is shielded by a device with a back-lit LCD screen such as a smart phone, laptop (including when inside a laptop bag), game console, etc.*

### NOTICE

*If the Smart key is inadvertently left inside the Luggage compartment and the vehicle is locked and the alarm set, an audible warning will sound and the Luggage compartment will re-open after 3 seconds.*

**Note:** Do not repeatedly attempt to close the Luggage compartment after it automatically re-opens, or the latch may overheat. If the cause of the automatic re-opening cannot be determined: Unlock both of the doors and the Luggage compartment with the Smart key. Check that both of the doors, the hood, and the Luggage compartment are closed properly and lock the vehicle again with the Smart key.



E171546

To open the Luggage compartment:

1. Press the Smart key button.
2. Press the exterior release button.
3. Press the interior release button.

**Note:** Pressing the release button (1, 2, or 3) again, on Coupe vehicles with a powered tailgate, will also close the tailgate. See **12, OPENING AND CLOSING THE POWERED TAILGATE.**