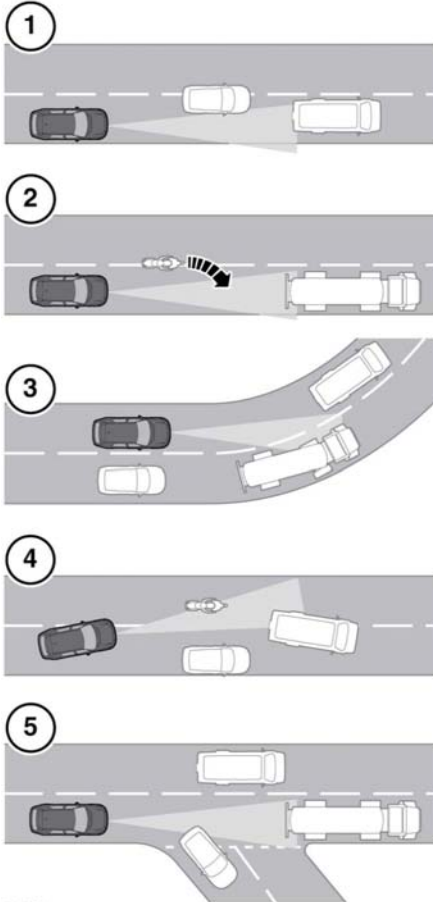


DETECTION BEAM ISSUES



E142911

Detection issues can occur:

1. When driving on a different line to the vehicle in front.
2. When a vehicle edges into your lane. The vehicle will only be detected once it has moved fully into your lane.
3. There may be issues with the detection of vehicles in front when going into and coming out of a bend.
4. When moving around a stationary vehicle. This may cause uncertainty as to which vehicle should be followed.
5. When the vehicle ahead turns out of your lane. This may cause uncertainty as to which vehicle should be followed.

In these situations ACC may operate unexpectedly. The driver should stay alert and intervene if necessary.

ACC MALFUNCTION

If a fault occurs while ACC or Follow mode is operational, ACC will switch off and cannot be used until the fault is cleared. The message **DRIVER INTERVENE** is displayed briefly in the Message centre and is then replaced by the message **CRUISE NOT AVAILABLE**.

If a fault with ACC or any related system occurs at any other time, the message **CRUISE NOT AVAILABLE** will be displayed. It will not be possible to activate ACC in any mode.

Accumulations of dirt, snow or ice on the radar sensor or cover may inhibit ACC operation. Fitting of a vehicle front protector or metallised badges may also affect ACC operation.

If this occurs in ACC cruise /Follow mode, the audible alarm sounds and the message **DRIVER INTERVENE** is displayed briefly. The message **RADAR SENSOR BLOCKED** will then be displayed.

Note: The same messages may also be displayed while driving on open roads with few objects for the radar to detect.

Clearing the obstruction allows the system to return to normal operation. If the obstruction is present when ACC is inactive (e.g. on initial starting or with ACC switched off), the message **RADAR SENSOR BLOCKED** will be displayed.