

Starting the engine

ROLLING RE-START

Note: The engine **START/STOP** button will be inhibited for 2 seconds after the engine has been switched off.

A rolling restart can be initiated by selecting Neutral (N) and pressing the engine **START/STOP** button.

KEYLESS START BACKUP

If the vehicle has been unlocked using the emergency key blade or the Smart key is not detected by the vehicle, it will be necessary to use the Keyless start backup to disarm the alarm and start the engine.

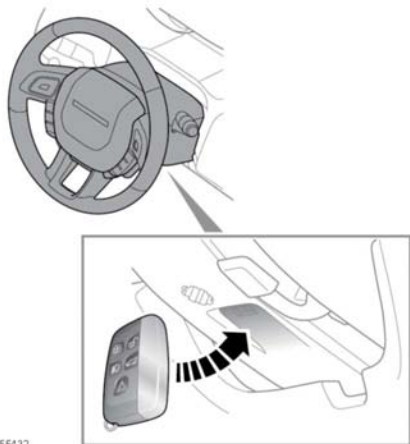
The Keyless start backup can only be used when one of the following messages is displayed in the Message centre:

Smart Key Not Recognised, Reposition or Place As Shown and Press Start Button.

2. Automatic transmission: Press the brake pedal firmly.
Manual transmission: Press the clutch pedal firmly.
3. Press and release the engine **START/STOP** button.

Once the engine has started, the foot pedal can be released, if it is safe to do so.

If the Smart key is not recognised, or the engine still fails to start, consult a Dealer/Authorised Repairer.



1. Position the Smart key flat against the underside of the steering column, with the buttons facing downwards.

Note: The steering column has a recessed area to aid placement of the Smart key.