
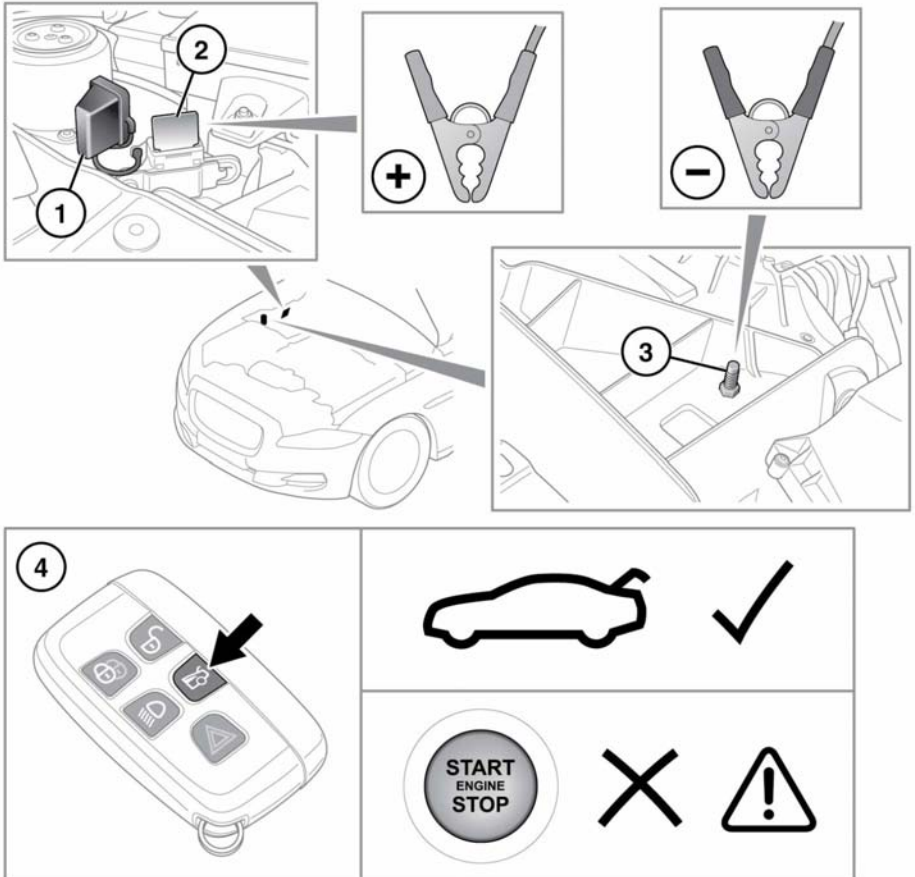


LUGGAGE COMPARTMENT RELEASE WHEN BATTERY IS DISCHARGED

If the battery becomes discharged when the luggage compartment is shut, it will be necessary to supply power to the release circuit in order to open it.

 Supplying power to the release circuit in the following manner may cause a fuse to blow. For this reason it is recommended that the following procedure is only carried out by suitably qualified persons.




E142724

With the bonnet open and the engine cover removed (see **180, FUSE BOX LOCATIONS**), connect jump lead cables to a suitable 12v supply, then proceed as follows:

1. Remove the cover from the positive terminal.

Luggage compartment

2. Attach the positive jump lead clamp to the positive terminal.
 3. Attach the negative jump lead clamp to the earthing post.
 4. Press the luggage compartment release button on the remote control.
-  Do not attempt to start the vehicle with power supplied in this way.