


Maintenance


1. Place the cover over the casing, ensuring all holes are aligned.
2. Push the cover down firmly, insert and fasten the turnbuckle clips.

UNBLOCKING WASHER JETS


 **Do not operate the washer jets during adjustment. Windscreen washer fluid may cause irritation to the eyes and skin. Always read and observe the washer fluid manufacturers instructions.**


If a washer jet becomes blocked, use a thin strand of wire to unblock the jet by inserting the wire into the jet. Make sure that the wire is completely removed after unblocking.


CHANGING A BULB

 Always replace bulbs with the correct type and specification. If you are in any doubt contact your Dealer/Authorised Repairer for advice.


XENON LAMPS

 Replacement or maintenance of Xenon lamps should only be carried out by suitably qualified personnel.


 High voltage is required to ignite the Xenon lamps.

 Xenon lamp units operate at a very high temperature. Make sure that the lamp units have cooled before attempting to touch them.


HEADLAMP BULB REPLACEMENT

 Removal of the headlamp unit should only be attempted by a qualified technician. If in doubt, consult your Dealer/Authorised Repairer.

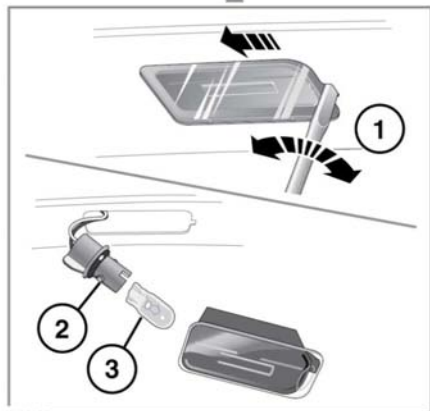
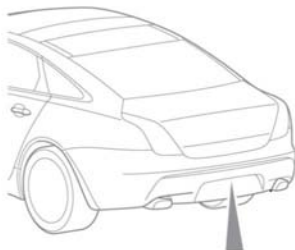
REAR LAMP REMOVAL

 Removal of the rear lamp unit should only be attempted by a qualified technician. If in doubt, consult your Dealer/Authorised Repairer.

HIGH LEVEL BRAKE LAMP BULB REPLACEMENT

 Removal of this lamp unit should only be attempted by a qualified technician. If in doubt, consult your Dealer/Authorised Repairer.

LICENSE PLATE LAMP BULB REPLACEMENT



E132058