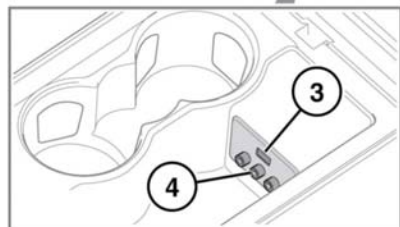
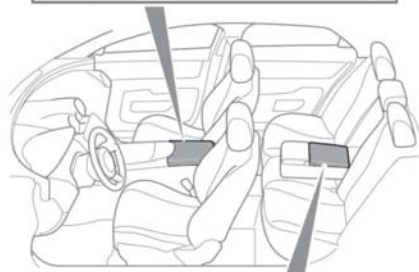
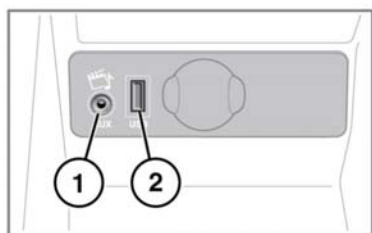


## CONNECTING A DEVICE



Read the manufacturer's instructions for any device, before it is connected to the audio system. Make sure that the device is suitable and comply with any instructions regarding connection and operation. Failure to do so may result in damage to the vehicle's audio system or the auxiliary device.



E 153 150

Connect the device into the appropriate socket:

1. 3.5 mm AUX socket.
2. USB/iPod socket.
3. Rear media USB/iPod socket.
4. Rear media AV sockets.

**Note:** On vehicles fitted with Executive class rear seats, items **3** and **4** are located in the rear storage compartment in the centre armrest. See **73, STORAGE COMPARTMENTS**.



Do not plug non-audio devices into the USB port.

**Note:** Use the cable supplied with your media device to connect to the USB socket.

**Note:** A USB hub cannot be used to connect more than 1 USB device to the audio unit.

**Note:** Devices connected to the USB ports will be charged, but devices that are fully discharged will not play.

**Note:** In some cases if an iPhone is connected via a USB cable for music and also to a **Bluetooth** wireless technology device for other phone functions, the audio will stream through only the last connected port. For example if a **Bluetooth** wireless technology device is the last connection made to the iPhone and the iPod lead is connected, no audio will be heard through the speakers via the iPod lead. Track title and time information will still be shown on the display. Audio output from the speakers will only be obtained if the user chooses audio mode on the **Bluetooth** wireless technology device. To address this issue disconnect and reconnect your device's USB cable or open the iPod application on the iPhone, select the **Bluetooth** icon and select Dock Connector on the pop up."

When an iPod is connected, playback will continue from the point at which it was last playing, provided the iPod battery is in a good state of charge.

**Note:** Options such as **Repeat** and **Mix** relate to the device currently playing, they will not apply to any subsequent device.

The 3.5mm AUX socket allows extra equipment (e.g. personal stereos MP3 player, hand-held navigation unit, etc.) to be connected to the audio system.