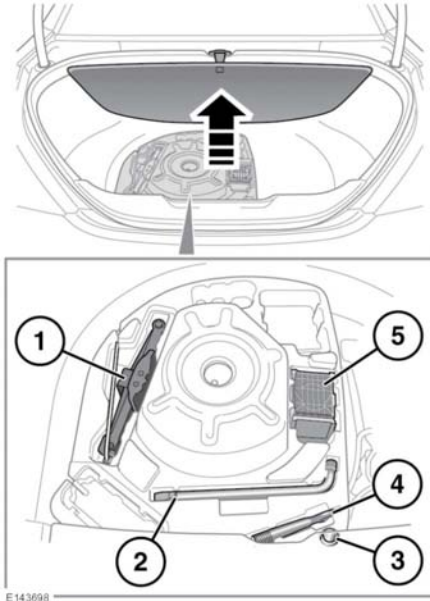


Wheel changing

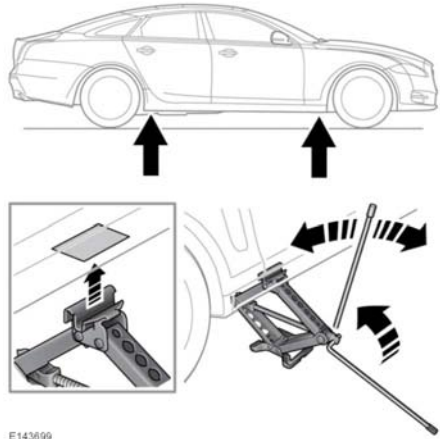
WHEEL CHANGING



1. Jack: Observe the instructions printed on the jack.
2. Wheel brace.
3. Locking wheel nut adaptor.
4. Towing eye.
5. Wheel chock.

To remove the spare wheel, unscrew and remove the bolt through the centre.

Before raising the vehicle slacken but do not remove the wheel nuts.



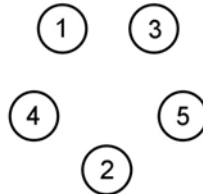
E143699

There are four jacking points on the underside of the floor. Two indented, triangular indicators are provided on each sill cover. These indicate the location for the jack.

Carefully raise the vehicle by turning the jack handle. Stop jacking the vehicle when the tyre just clears the ground. Minimum tyre lift gives maximum vehicle stability.

Note: To remove the centre badge use the plastic tipped end of the wheel nut wrench handle, push the centre badge from its housing from the inside of the wheel.

Using the wheel nut wrench, lightly tighten the wheel nuts alternately using the sequence shown in the illustration.



E132675