

CHILD SEAT POSITIONING



Information given within the table is correct at the time of going to press. However, availability of child restraints may change. Please consult your Dealer/Authorised Repairer for the latest recommendation.

Note: The information contained in the following table may not be applicable to all countries. If you are in any doubt regarding the type and fitment of child seats seek advice from your Dealer/Authorised Repairer.

Mass group	Seating positions			
	Front passenger*	Rear outboard	Rear centre	Rear centre**
0 = Up to 10 kg (22 lb.) 0 to 9 months	X	U	U	X
0+ = Up to 13 kg (29 lb.) 0 to 18 months	X	U	U	X
I = 9 to 18 kg (20 to 40 lb.) 9 months to 4 years	UF	U	U	X
II = 15 to 25 kg (33 to 55 lb.) 4 to 9 years	U	U	U	X
III = 22 to 36 kg (49 to 80 lb.) 8 to 12 years	U	U	U	X

U = Suitable for universal category restraints approved for this mass group.

UF = Suitable for forward facing Universal category restraints approved for this mass group.

X = Not suitable for child restraint fitment in this mass group.

* Jaguar recommend that the front passenger seat be positioned fully rearward, with the cushion adjusted to the highest position when installing child restraints.

** For vehicles fitted with Executive class rear seats, the centre position is unsuitable for both forward and rearward facing child seats.

Note: Ages given are approximate. In case of doubt, the child's weight, not age, should be used when considering an appropriate child seat.

ISOFIX ANCHOR POINTS



Do not attempt to fit ISOFIX restraints to the centre rear seating position. The anchor bars are not designed to hold an ISOFIX restraint in this position.




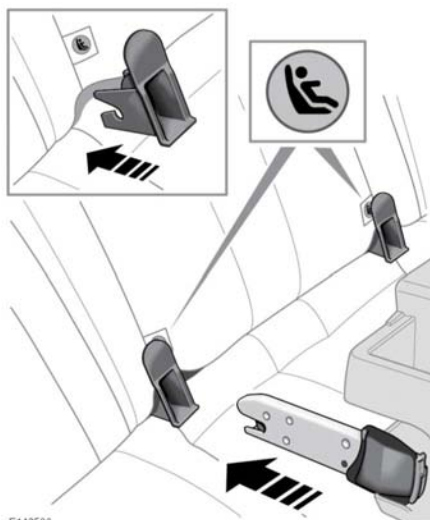
If the restraint is not correctly anchored, there is a significant risk of injury to the child in the event of a collision or emergency braking.

⚠ If removing the centre head restraint in order to fit a child restraint, always secure the head restraint when storing it.

Both of the outer rear seat positions are equipped to accept ISOFIX restraints.

For vehicles fitted with Executive class rear seats, before fitting an ISOFIX seat, adjust the seatback to the fully up-right position.

 This symbol is shown on a label sewn into the seats to indicate the position of the ISOFIX lower anchorages.



E142536

To install an ISOFIX child seat:

1. Raise the head restraint on the relevant seat.
2. Locate the lower anchor bars which are accessible through the gap between the seatback and seat base. Insert the protective guides supplied with the child seat as shown. The insertion positions for the guides are identified by the ISOFIX labels.
3. Slide the child seat locking mechanism into the protective sleeves and onto the anchor bars.
4. Test the security of the child restraint. To do this, attempt to pull the restraint away from the vehicle seat and twist the restraint from side to side. Even if the restraint appears secure you should always check the anchor points visually to make sure of the correct attachment.

Note: Always fit the upper tether anchorage and tightened correctly.

Note: The information contained in the following table may not be applicable to all countries. If you are in any doubt regarding the type and fitment of child seats seek advice from your Dealer/Authorised Repairer.

Mass group		Size classes	Fixtures	Rear outboard seats
Carrycot		F/G	ISO L1/L2	X
0 =	Up to 10 kg (22 lb.) 0 to 9 months	E	ISO R1	IL*
0+ =	Up to 13 kg (29 lb.) 0 to 18 months	C/D/E	ISO R1/R2/R3	IL*