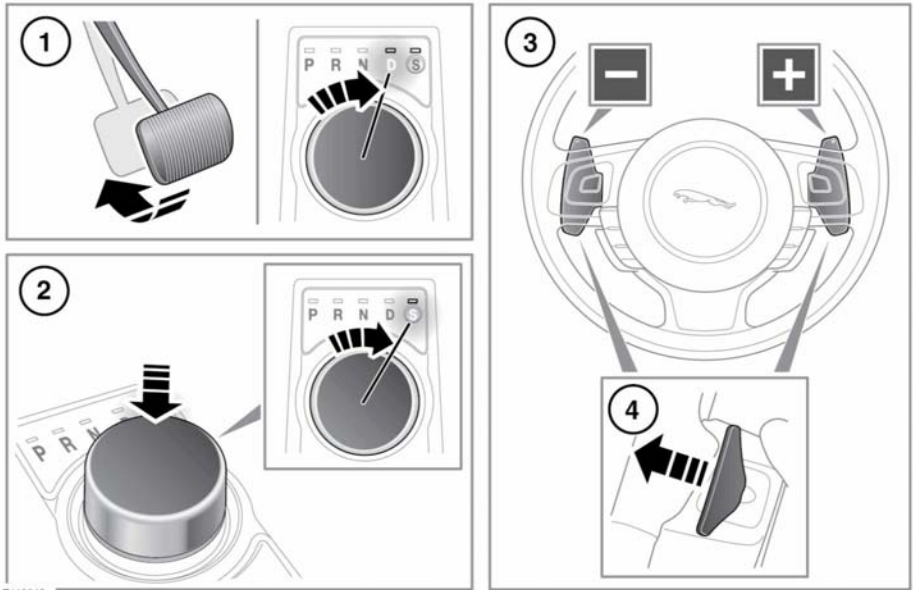


AUTOMATIC TRANSMISSION



E143642

1. To select Drive (D) or Reverse (R) gear, press the brake pedal and rotate the rotary drive selector.
2. To select Sport mode, from D press the rotary drive selector down and rotate to S.
3. Gear shift paddles (left paddle for downshifts, right paddle for upshifts), see **84, MANUAL GEAR SELECTION**.

Note: The gear shift paddles can be configured to operate in 'S only' or 'D and S' via the Vehicle Set-up menu. See **36, INSTRUMENT PANEL MENU**.

4. Pull briefly to change gear.
To exit manual mode, either pull and hold the shift-up paddle for approximately one second (to return directly to automatic operation in D or S) or, if in S, rotate the gear selector to the D position.

Note: The selected gear will be displayed in the instrument panel, also see **86, DYNAMIC MODE**.

- ⚠ Never select the Park (P) position while the vehicle is in motion.
- ⚠ Never select the Reverse (R) position while the vehicle is in forward motion.
- ⚠ Never select a forward gear while the vehicle is moving backwards.
- ⚠ Do not rev the engine or allow it to run above normal idle speed while selecting D or R, or while the vehicle is stationary with any gear selected.
- ⚠ Do not allow the vehicle to remain stationary with a drive gear selected and the engine running. Always select Park P or Neutral N if the engine is to idle for a prolonged period.