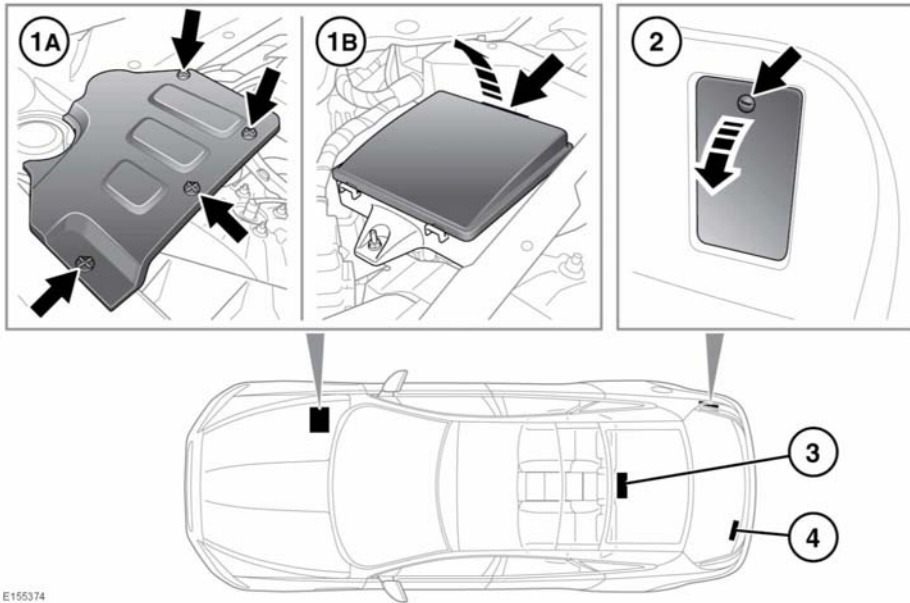


## FUSE BOX LOCATIONS



E155374

- !** When a fuse box lid is removed, take care to protect the box from moisture, and refit the lid at the earliest opportunity.

There are 4 separate fuse boxes fitted to the vehicle, each one containing fuses protecting a different group of circuits.

1. Engine compartment fuse box.
  - A. Undo the 4 turn-buckles and remove the engine cover to access the fuse box.
  - B. Remove the fuse box cover.
2. Luggage compartment fuse box.
3. Passenger compartment fuse box.  
The fuse box is accessed through the flap behind the rear centre armrest.
4. Secondary luggage compartment fuse box.

To access the fuse box, raise the luggage compartment floor trim.

## CHANGING A FUSE

- !** Always turn off the ignition system and the affected electrical circuit, before replacing a fuse.
- !** Fit Jaguar approved replacement fuses of the same rating and type, or fuses of matching specification.
- !** If the replacement fuse blows after installation, the system should be checked by your Dealer/Authorised Repairer.

**Note:** Jaguar recommend that owners do not remove or replace relays. It is recommended that you seek qualified assistance in the event of a relay failure.

Spare fuses are located in the tool tray situated under the floor in the luggage compartment.