



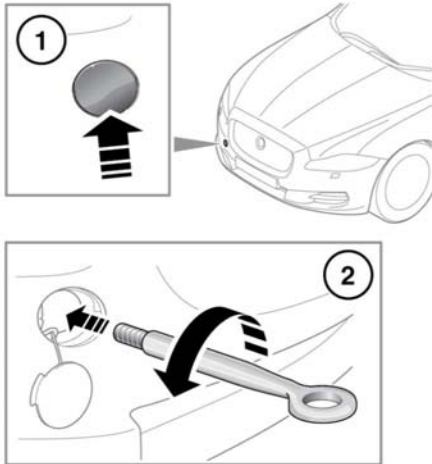
Vehicle recovery

TOWING EYES

-  The towing eye at the front of the vehicle is designed for on-road recovery only.
-  Do not tow the vehicle on all four wheels.

ATTACHING THE FRONT TOWING EYE


The towing eye is included in the tool kit, located in the under-floor area of the luggage compartment.



E144619

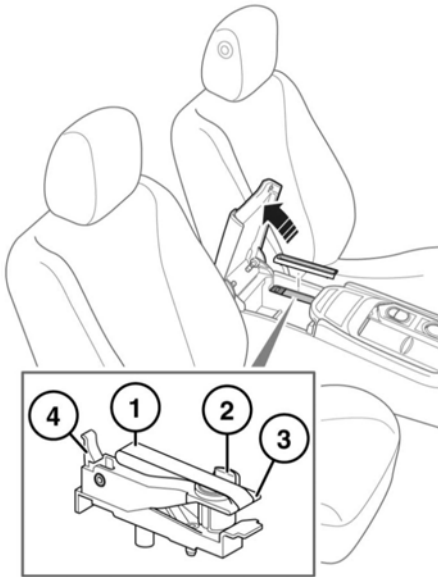
1. Pop out the cover in the front bumper.
2. Locate the towing eye through the bumper and screw the towing eye anticlockwise into its fixing, until secure.

TRANSMISSION PARK RELEASE

-  Make sure that the vehicle is secured with wheel chocks, apply the Electric Parking Brake (EPB), or firmly press the brake pedal. Failure to do so can result in unexpected movement of the vehicle, causing serious injury or death.

When recovering your vehicle, it may be necessary to manually release the transmission from the Park (P) position to the Neutral (N) position. The Transmission park release is operated by a lever located in the cubby box (Rear Wheel Drive (RWD) vehicles) or in the engine compartment (All Wheel Drive (AWD) vehicles).

Rear Wheel Drive Vehicles



E163525

Lift up the cubby box lid and locate the trim panel. Prise up the trim panel and remove it.

To operate the Transmission park release:

1. Lift up the strap.
2. Rotate the locking device 90° counter-clockwise.
3. Pull up the operating lever with the strap, up to the vertical position.
4. The locking latch will retain the operating lever in this position.

The transmission is now in the neutral (N) position.

To re-engage the transmission park lock:

- Push the locking latch (4) outwards and return the operating lever (3) to the horizontal position.
- Rotate the locking device (2) 90° clockwise.

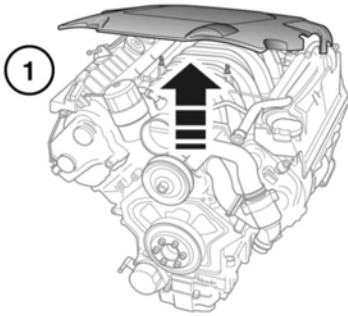
Reinstall the trim panel and close the cubby box.

All Wheel Drive Vehicles



If the vehicle has been driven recently, do not touch exhaust and cooling system components until the engine has cooled.

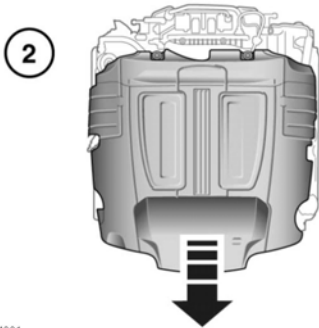
The Transmission park release cable is located in the engine compartment on the left side of the engine. To access the Transmission park release cable, open the engine compartment and remove the engine cover.



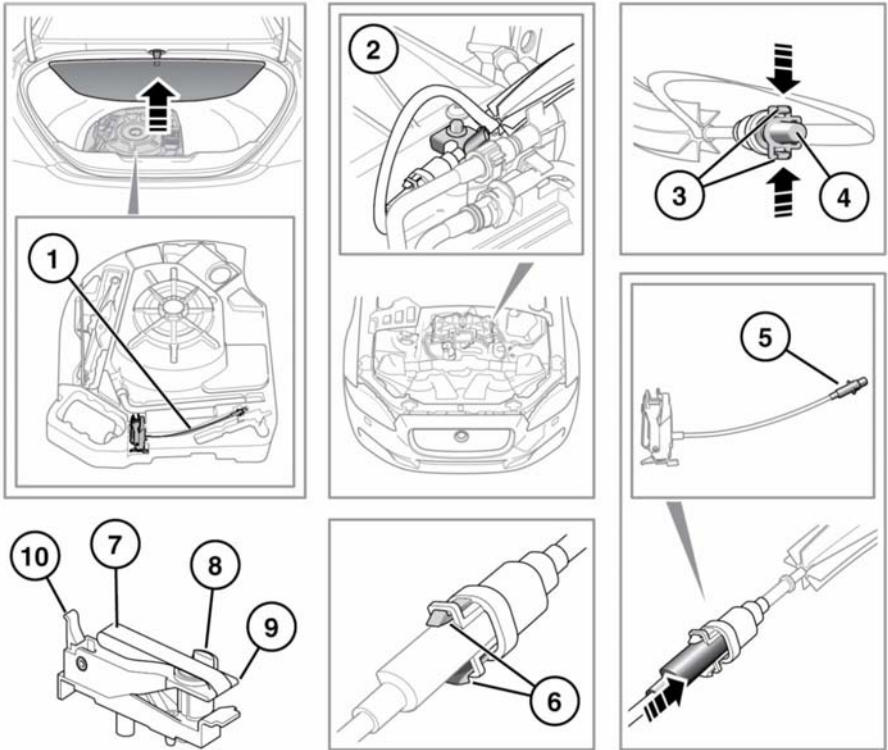
To remove the engine cover:

1. Raise the front of the engine cover to release the 2 front mountings.
2. Slide the engine cover forwards to release the 2 rear mountings.

Stow the engine cover in a suitable place, and do not re-install the engine cover until the Transmission park release mechanism has been disengaged and the Transmission park release tool has been disconnected.



E164331



E164332

To operate the Transmission park release:

1. Remove the Transmission park release tool from the tool kit, located under the luggage compartment floor trim.
2. Release the Transmission park release cable from the locating clip on the engine.
3. Press the 2 locking tangs to release the blanking plug.
4. Remove the blanking plug from the Transmission park release cable
5. Install the Transmission park release tool to the Transmission park release cable.

6. Make sure that the Transmission park release tool is correctly located into the 2 locking tangs
7. Lift up the strap.
8. Rotate the locking device 90° counter-clockwise.
9. Pull up the operating lever with the strap, up to the vertical position.
10. The locking latch will retain the operating lever in this position.

To re-engage the transmission park lock: