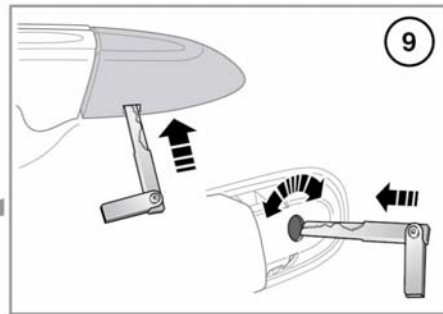
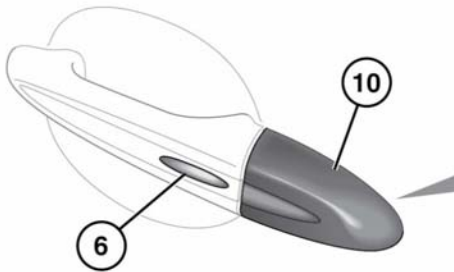
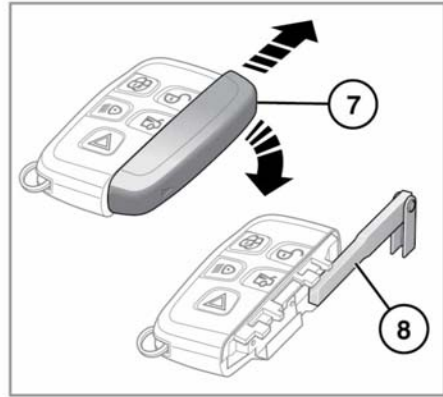
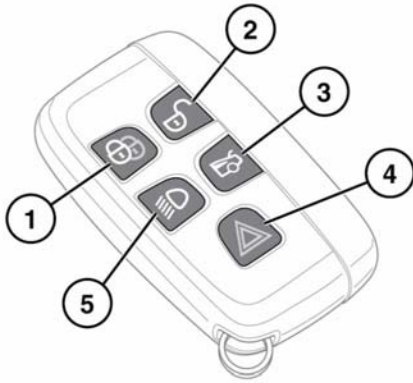




Entering the vehicle

UNLOCKING THE VEHICLE



E164698

 **To prevent accidental or unauthorised operation, never leave children or animals unattended in the vehicle. The vehicle can be operated when the Smart key is inside the vehicle.**

 **While a door is open, the locking latch is exposed. Do not attempt to manually close the latch as it may also automatically 'soft close' and trap items or body parts.**

1. Lock: Press the lock button to secure the vehicle. The vehicle can be Single or Double locked. See **9, SINGLE LOCKING** and **9, DOUBLE LOCKING**.

2. Unlock: Your vehicle can be unlocked using either Single or Multi-point entry. When Single point entry is enabled, the first press unlocks the driver's door and enables the other doors to be opened from the inside. The hazard warning lamps will flash twice to indicate that the vehicle is unlocked and the alarm has been disarmed. A second press unlocks the passenger doors and the luggage compartment.

If Multi-point entry is enabled, press briefly to unlock all of the doors and the luggage compartment and to disarm the alarm. The hazard warning lamps will flash twice to indicate that the vehicle is unlocked and the alarm has been disarmed.

To change from Single to Multi-point entry (or vice versa), press both the lock and unlock buttons simultaneously for 3 seconds. The hazard warning lamps will flash twice to confirm the change. The change can also be achieved using the Instrument panel menu.

3. Press to open the luggage compartment. The vehicle security system will remain active for the period that the luggage compartment is open but the intrusion and inclination sensing systems will be inhibited. Door and bonnet security will remain active. The security system will re-arm to its previous state when the luggage compartment is closed.
4. Panic alarm: Press and hold for 3 seconds, or press 3 times within 3 seconds, to activate the horn, siren and hazard lamps. After 5 seconds, the alarm can be cancelled by pressing the panic alarm button for 3 seconds or by pressing the button 3 times within 3 seconds. The emergency alarm will also be cancelled if the vehicle detects a valid Smart key when the START/STOP button is pressed.
5. Press to switch on the approach illumination for up to 120 seconds. The illumination time is set using the exit delay switch. Pressing the button again or operating the starter button will turn the approach lamps off.
6. Keyless locking button. See **10, KEYLESS LOCKING**.
7. Emergency key cover: Slide and remove the cover to expose the emergency key.
8. Emergency key: Slide the key to remove and then unfold the handle.
9. To unlock or lock the door in an emergency (if the Smart key or Keyless entry fail to operate):
 - Insert the emergency key blade into the slot in the door lock cover.
 - Carefully lift the key blade to lever the cover off the retaining clips.
 - Insert the key blade into the exposed lock to operate.

To lock: Make sure that all of the doors are closed, then turn the key blade towards the front of the vehicle and release. This will lock all of doors but will not arm the alarm.

To unlock: Turn the key blade towards the rear of the vehicle and release to unlock the door. If the security system is disarmed, all the doors and the luggage compartment will be unlocked.

***Note:** If the vehicle is unlocked using the emergency key blade with the security system armed, the alarm will sound when a door is unlocked. To deactivate the alarm, press the unlock button on the Smart key or press the engine START/STOP button with the Smart key inside the vehicle.*
10. To replace the door lock cover:
 - Align the cover to engage the top 2 clips.
 - Push the bottom of the cover to engage the lower clip.