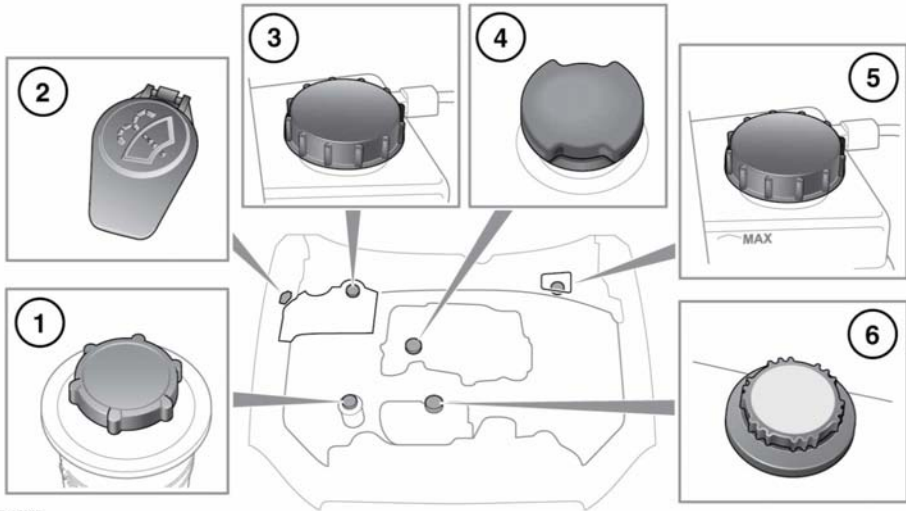


Fluid level checks

Diesel engine



E135275

1. Power steering.
2. Washer fluid.
3. Brake fluid (right-hand drive vehicles).
4. Engine oil.
5. Brake fluid (left-hand drive vehicles).
6. Coolant.

⚠ Do not drive the vehicle if there is a possibility that leaked fluid will come into contact with a hot surface, such as the exhaust.

CHECKING THE ENGINE OIL LEVEL

The engine oil level is not monitored when the engine is running and/or the vehicle is in motion.

The engine oil should be checked frequently and topped up as required using the correct grade for the engine.

⚠ Check the engine oil weekly. If any significant or sudden drop in oil level is noted, seek qualified assistance.

⚠ If the message **ENGINE OIL PRESSURE LOW** is displayed, stop the engine as soon as it is safe to do so and seek qualified assistance. Do not start the engine until the cause has been rectified.

Prior to checking the oil level make sure that the vehicle is on level ground.

All except 2.0 litre petrol engine

- The engine oil has reached working temperature (oil is hot).
- The engine has been switched off for 10 minutes, as the system will not give an accurate reading until the oil level has stabilised.

The oil level can then be checked as follows:

1. Switch on the ignition (do not start the engine).