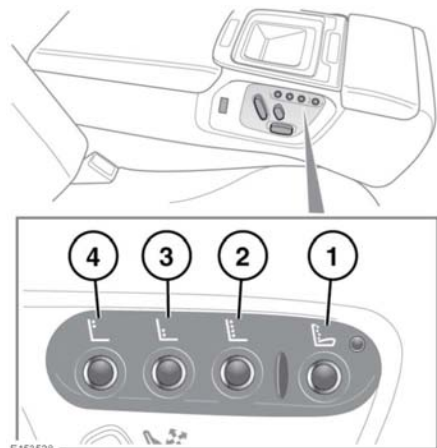


Rear seats

A seat position can only be memorised during the 5 second period.

Any existing settings for a memory preset will be over-written when programming a memory position.

REAR SEAT MASSAGE



1. Massage: Press to turn the massage function on/off.
2. Press to select rolling wave.
3. Press to select lumbar wave.
4. Press to select shoulder wave.

Note: The massage programmes have a specific timed cycle, which will need to be re-selected for continuous use.

The Rear seat massage can also be set via the touch screen, see **63, TOUCH SCREEN HOME MENU**.

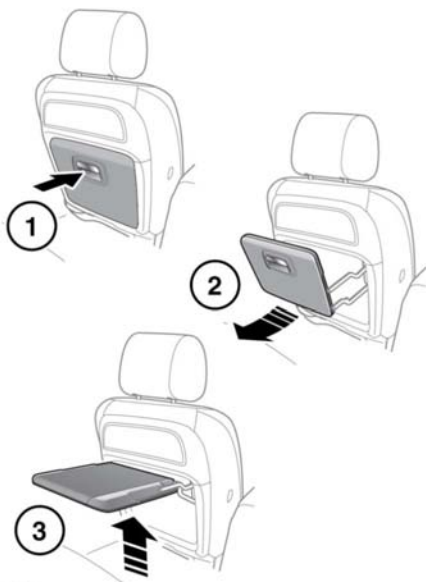
FOLDING TABLE



If the vehicle is involved in an accident, or subject to sudden braking or direction change, loose items can cause serious injury.



Stow the table when not in use.



To open the table: Pull the table by the handle (1) and then pull the underneath front edge of the table (2) to guide it in to its final horizontal position (3).

To close the table: Pull the front edge underneath of the table down and then push the table into the closed position.

REAR SEAT SAFETY



Never allow passengers to travel in the luggage compartment under any circumstances.



All vehicle occupants should be seated correctly, and wear a seat belt at all times when the vehicle is in motion.