

# Exiting the vehicle

## SENSOR FAULTS

If the security systems detect a fault with one of the security sensors, an error tone will sound from the alarm after the vehicle is unlocked and disarmed. If this condition occurs, please visit your Dealer/Authorised Repairer for rectification.

## EMERGENCY LOCKING

In the event of the battery discharging or a fault occurring with the Keyless locking system, the doors must be locked manually.

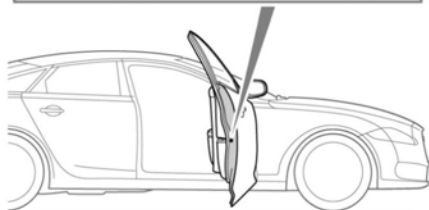
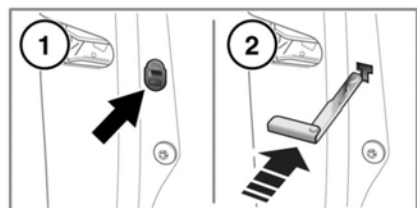
All unlocked doors, except the driver's door, should be locked using the following procedure. Finally the driver's door should be locked via the external door lock. See **4, UNLOCKING THE VEHICLE**.

**Note:** Do not leave the emergency key blade in the vehicle at any point during the emergency locking procedure.

2. Insert the emergency key blade firmly into the emergency lock until a click is heard. The emergency key blade can now be removed.

**Note:** The emergency key blade is stowed in the Smart key. See **4, UNLOCKING THE VEHICLE**.

3. Replace the emergency lock access cover by fitting the lower clip first, then pushing the cover until it clicks into place.
4. Close the door and check to make sure the door is locked. Repeat the procedure for all other unlocked doors.



E164171

1. Open the door and locate the emergency lock access cover. There is a small chamfer on the back of the cover; using a finger nail, push up and away from the door to remove the cover.