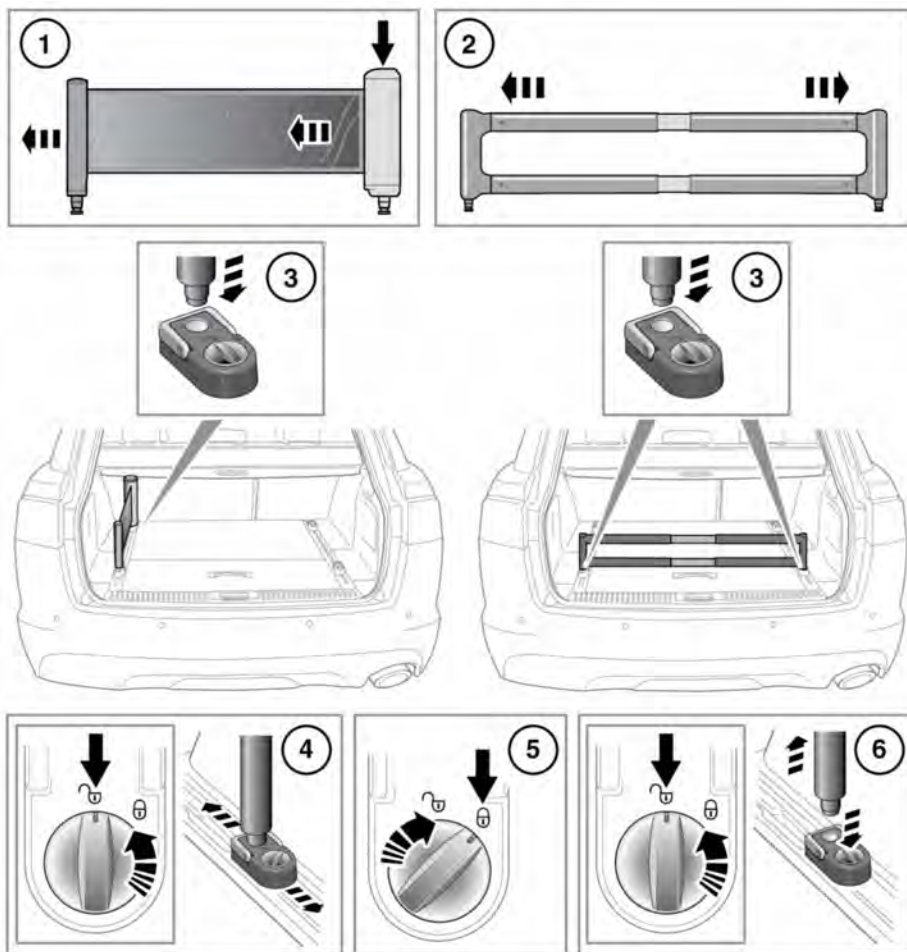


# Luggage compartment

## LUGGAGE DIVIDER

For Sportbrake models, a luggage divider kit is provided to assist with safely securing items of luggage to the loadspace floor.

Floor-mounted luggage rails provide a full width mounting channel that will accommodate a flexible retracting band and/or a solid telescopic divider to retain soft and hard luggage of all shapes and sizes.



E156932

1. Press and pull to adjust to the length required of the retracting band.

2. Adjust the divider to the length required.

3. Unlock the required lashing eye, attach the luggage band/divider to the lashing eye.
4. With the lashing eye in the unlocked position, press the switch and slide to the required position in the luggage rail.
5. Lock the lashing eye when it is in the required position.
6. To remove the luggage band/divider from the lashing eye, unlock the lashing eye and press the lock/unlock switch and release.